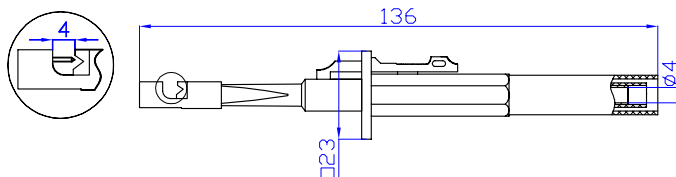
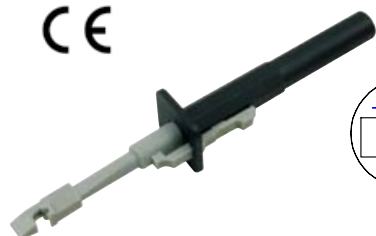


20.163. *

CE



Feature

Safety test probe with 4mm socket connection. Stainless steel tip can connect with the wire without cutting it.

材质

塑壳 :PA
主体 : 不锈钢和铜
电气性能 :CATIII 1000V/Max.10A

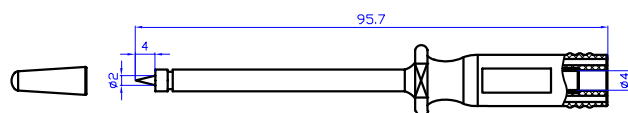
Material

Insulator:PA
Body:Stainless steel & Brass
Rated voltage/current:
CATIII 1000V/Max.10A

1 2

20.164. *

CE



Feature

Safety test probe with 4mm socket connection. Sharp stainless steel tip with the protective cap.

材质

塑壳 :PA
主体 : 不锈钢和铜
电气性能 :CATIII 1000V/Max.10A

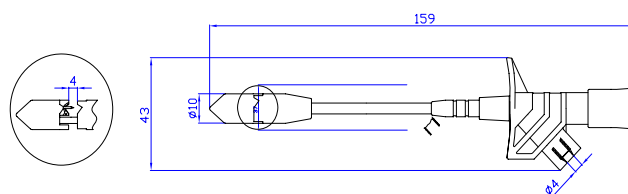
Material

Insulator:PA
Body:Stainless steel & Brass
Rated voltage/current:
CATIII 1000V/Max.10A

1 2

20.168. *

CE



Feature

Safety test probe with 4mm socket connection. Stainless steel tip can connect with the wire without cutting it.

材质

塑壳 :PA
主体 : 铜和不锈钢
表面 : 镀镍
电气性能 :CATIII 1000V/Max.10A

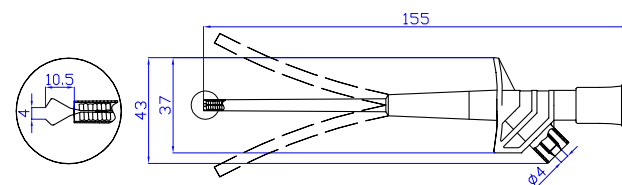
Material

Insulator:PA
Body:Brass & Stainless steel
Surface:Nickel plated
Rated voltage/current:
CATIII 1000V/Max.10A

1 2

20.169. *

CE



Feature

Safety test clip with 4mm socket connection. Flexible spring with the tube can contact the wires and terminals even at the corner.

材质

塑壳 :PA
主体 : 铜和不锈钢
电气性能 :CATIII 1000V/Max.10A

Material

Insulator:PA
Body:Brass & Stainless steel
Rated voltage/current:
CATIII 1000V/Max.10A

1 2