

## FEATURES

- \* HIGH DENSITY SOCKETS FOR IC WITH A PITCH OF 1.778 MM
- \* LOW PROFILE DESIGN.
- \* SAVING ON PCB REAL SETATE.
- \* MANUALLY AND AUTOMATICALLY INSERTABLE.
- \* CLOCEED BOTTOM DESIGN TO PREVENT SOLDER WICKING.
- \* PROVIDED NEW TYPE FOR FLUX PROTECTION.

## TECHNICAL DATA

### MATERIAL

- \* CONTACT:PHOSPHOR BRONZE.
- \* PLATING:TIN PLATED.
- \* INSULATOR:GLASS FILLED POLYESTER P.B.T. (UL-94 V-0)

### MACHANICAL

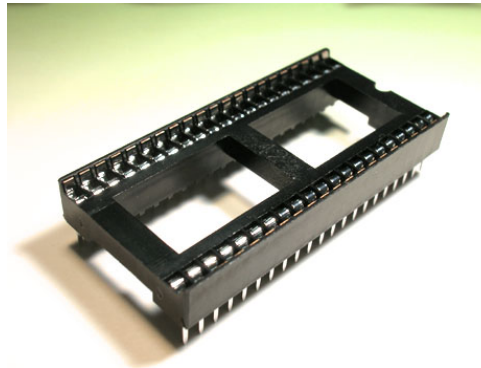
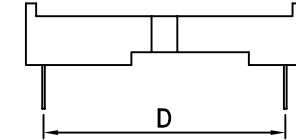
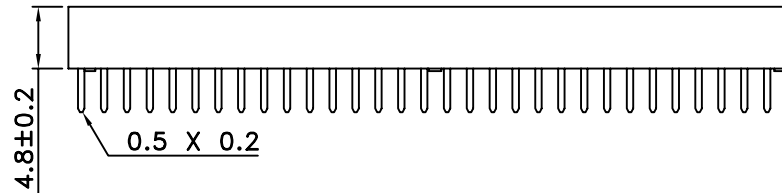
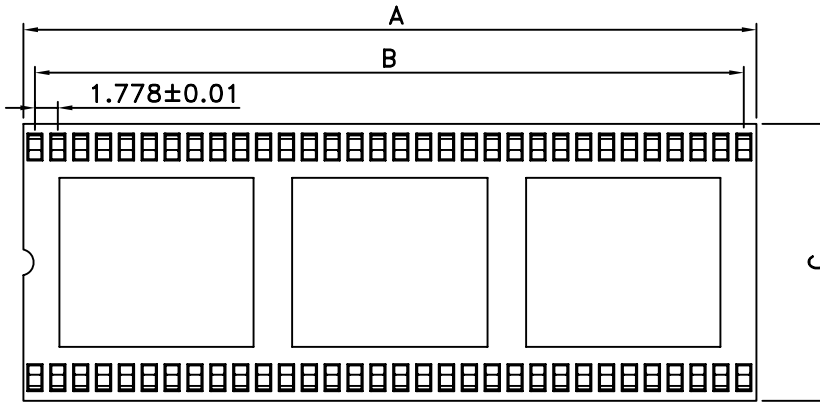
- \* OPERATING TEMPERATURES:-55°C~+125°C.
- \* INSERTION FORCE: 450 G
- \* WITHDRAWAL FORCE: 70 G MIN

### ELECTRICAL

- \* CURRECT RATING: 1 AMP. MAX.
- \* CONTACT RESISTANCE: 20M OMH MIN.
- \* WITHSTANDING VOLTAGE: AC 600V/MINUTE.

TOLERANCES ARE

.X  
.XX  
.XXX  
AWG



| POSITION | A     | B     | C     | D     | SPACE |
|----------|-------|-------|-------|-------|-------|
| 40       | 35.56 | 33.78 | 17.70 | 15.24 | 06    |
| 42       | 37.34 | 35.56 | 17.70 | 15.24 |       |
| 48       | 42.67 | 40.89 | 17.70 | 15.24 |       |
| 52       | 46.23 | 44.45 | 17.70 | 15.24 |       |
| 54       | 48.01 | 46.23 | 17.70 | 15.24 |       |
| 56       | 49.78 | 48.01 | 17.70 | 15.24 |       |
| 64       | 56.90 | 55.12 | 17.70 | 15.24 |       |

DESCRIPTION: **HIGH DENSITY 1.778MM IC SOCKET**