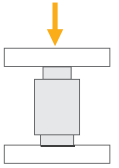


# BR016

## Compression Load Cell



### Applications



Tank & Silo



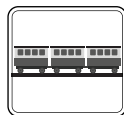
Industrial Processes



Truck Scales



High Capacity Applications



Railroad Truck Scales

### Key Features

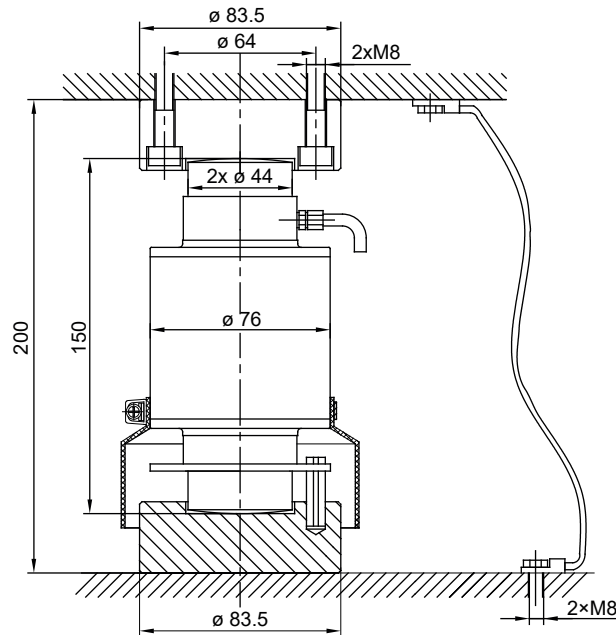
- Capacities: 10~50 t
- OIML R60 approved
- Alloy steel construction
- Protection class: IP68

BR016 is a high performance fully welded compression type load cell. It perfect fits for use in high capacity weighing systems such as truck scales, axle scales, heavy capacity floor scales, tank scales, ship weighing and other heavy capacity industrial applications. BR016 is supplied with Rockwell 44 hardened upper and lower receivers as standard.

# Technical Specifications

Model		BR016
Capacity ( $E_{max}$ )	t	10 / 15 / 20 / 25 / 30 / 40 / 50
Accuracy class according to OIML R60		C3
Rated output (RO)	mV / V	$2.0 \pm 0.002$
Maximum number of load cell verification intervals ( $n_{LC}$ )		3000
Minimum load cell verification interval ( $V_{min}$ )		$E_{max} / 10000$
Temperature effect on zero	$\%RO / 10^{\circ}C$	$\pm 0.0175$
Temperature effect on sensitivity	$\%RO / 10^{\circ}C$	$\pm 0.0175$
Combined error	$\%RO$	$\pm 0.03$
Safe load limit	$\%E_{max}$	150
Ultimate load	$\%E_{max}$	200
Zero balance	$\%RO$	$\pm 1.0$
Creep error (30 minutes)	$\%RO$	$\pm 0.017$
Excitation voltage, recommended	V (DC)	5 - 12
Excitation voltage, maximum	V (DC)	15
Input resistance	$\Omega$	$700 \pm 10$
Output resistance	$\Omega$	$700 \pm 10$
Insulation resistance (at 50 V DC)	M $\Omega$	$\geq 5000$
Compensated temperature range	$^{\circ}C$	- 10...+ 40
Operating temperature range	$^{\circ}C$	- 35...+ 65
Material		Alloy steel
Protection class		IP 68
Cable		Length: 8 meter (10 t), 10 meter (15 t), 12 meter (20 t,25 t), 14 meter (30 t), 16 meter (40 t,50 t) Diameter: 5mm

## Dimensions (mm)



## Color Codes

Function	Colors
+ excitation	blue
- excitation	black
+ signal	white
- signal	red
shield	yellow