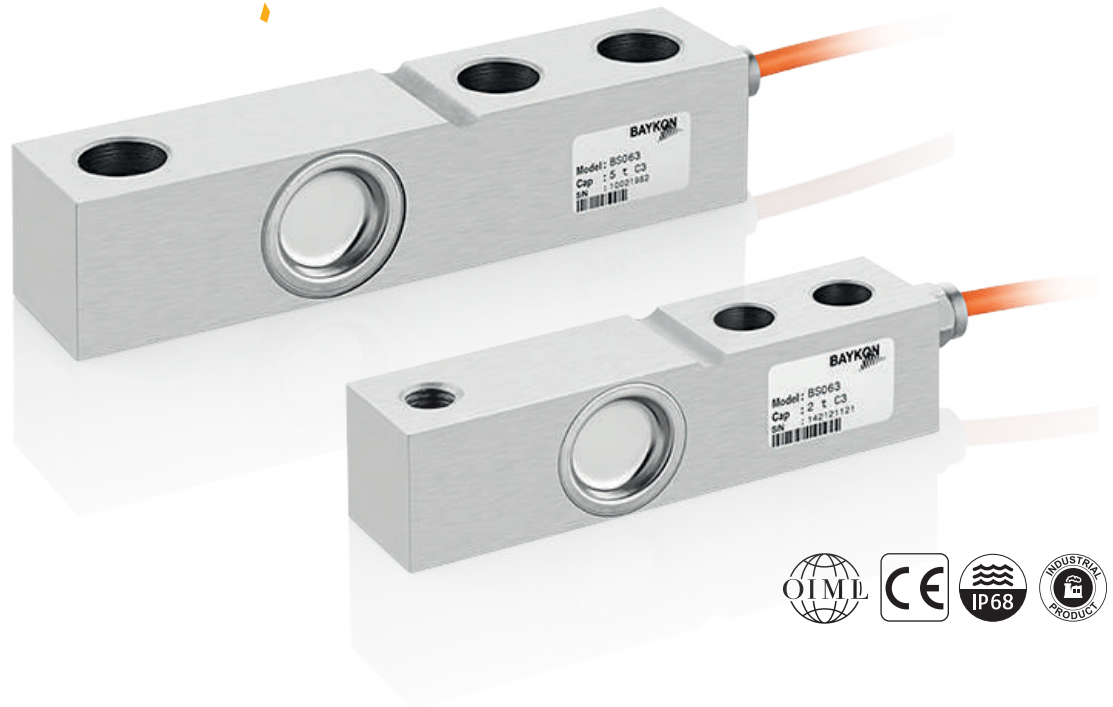
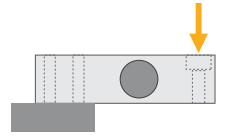


BS063 / BS063S

Shear Beam Load Cells



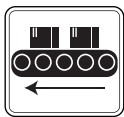
Applications



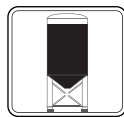
Floor Scales



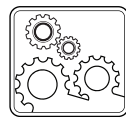
Suspended Vessel



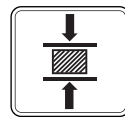
Conveyor Scales



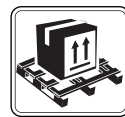
Tank & Silo



Industrial Processes



Testing Machines



Pallet Scales



Mobile Applications



Water Proof Scales

Key Features

- 150~5000 kg Capacities
- OIML R60 approved
- Metric threaded and blind hole types
- Alloy steel & Stainless steel
- Protection class: IP 68

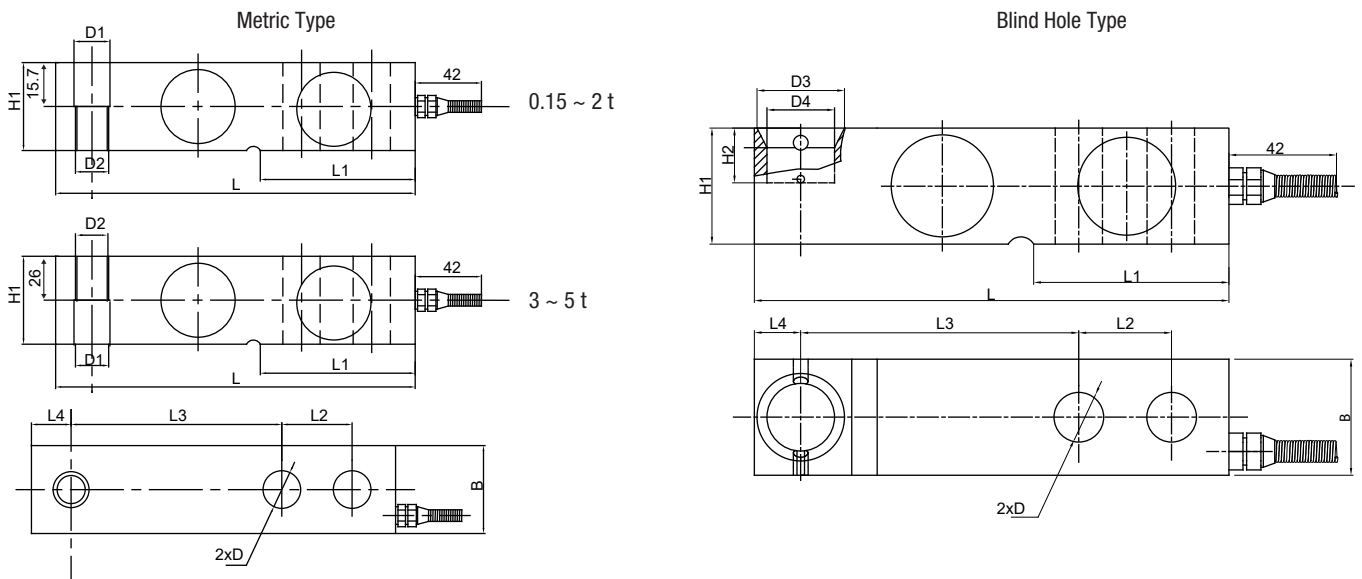
The BS063 / BS063S is a welded nickel plated alloy steel / stainless steel load cell available a wide range of capacities from 150 kg to 5000 kg.

With IP68 protected metric threaded and blind hole types, they are perfect choice for applications such as floor scales, conveyor, hopper and low capacity vessel weighing systems.

Technical Specifications

Model		BS063	BS063S
Capacity (E _{max})	t	0,15 / 0,25 / 0,3 / 0,5 / 1 / 1,5 / 2 / 3 / 5	0,15 / 0,25 / 0,3 / 0,5 1 / 1,5 / 2 / 3 / 5
Accuracy class according to OIML R60		C3 (Metric only)	G3 C3 (Metric only)
Rated output (R0)	mV / V	2.0 ± 0.002 / 3.0 ± 0.003 (≥ 0,5 t)	2.0 ± 0.002 / 3.0 ± 0.003 (≥ 0,5 t)
Maximum number of load cell verification intervals (n _{LC})		3000	
Minimum load cell verification interval (V _{min})		E _{max} / 10000	E _{max} / 10000
Temperature effect on zero	%R0 / 10°C	± 0.0175	± 0.02
Temperature effect on sensitivity	%R0 / 10°C	± 0.0175	± 0.02
Combined error	%R0	± 0.03	± 0.05
Safe load limit	%E _{max}	150	
Ultimate load	%E _{max}	200	
Zero balance	%R0	± 1	
Creep error (30 minutes)	%R0	± 0.017	± 0.02
Excitation voltage, recommended	V (DC)	5 - 12 (DC)	
Excitation voltage, maximum	V (DC)	15 (DC)	
Input resistance	Ω	400 ± 10	
Output resistance	Ω	352 ± 3	
Insulation resistance (at 50 V DC)	MΩ	≥ 5000 (at 50VDC)	
Compensated temperature range	°C	- 10...+ 40	
Operating temperature range	°C	- 30...+ 70	
Material		Nickel plated alloy steel	Stainless steel
Protection class		IP68 , Hermetically welded	
Cable		Length: 3 m up to 2 t / 4.2 m (3 & 5 t) diameter: 5 mm	

Dimensions (mm)

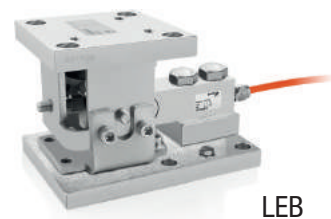


Capacity (t)	L	L1	L2	L3	L4	B	H1	H2	D	D1	D2	D3	D4
0.15 ~ 2	130	53.5	25.4	76.2	12.7	31.8	31.8	12	∅13	∅13.5	M12	∅24	∅18.5
3 ~ 5	171.5	72.5	38.1	95.3	19	38.1	38.1	20	∅20	∅20	M18	∅35	∅25

Color Codes

Function	Colors
+ excitation	blue
- excitation	black
+ signal	white
- signal	red
shield	

W Modules



LEB