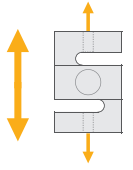
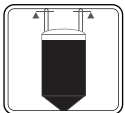


BT610 / BT610S

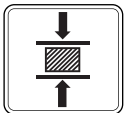
Tension - S Type Load Cell



Applications



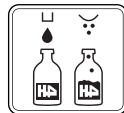
Suspended Vessel



Testing Machines



Crane Scales



Packing & Filling Applications

Key Features

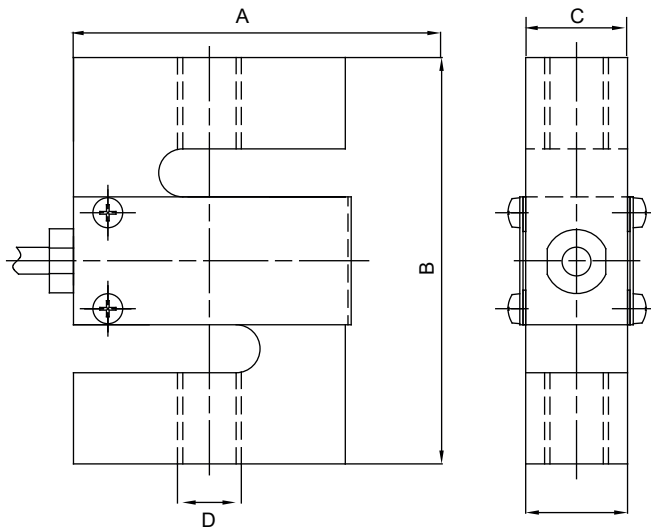
- Capacities: 100 kg~5000 kg
- Alloy steel and Stainless steel construction
- Tension and compression applications
- Protection class: IP66

BT610 alloy steel / BT610S is stainless steel S type loadcell with IP66 protected. It perfectly fits for use in industrial applications such as crane scales, suspended hopper scales, conversion of mechanical scales and testing equipment.

Technical Specifications

Model		BT610 / BT610S
Capacity (E _{max})	kg	100 / 250 / 500 / 750 / 1000 / 1500 / 2000 / 3000 / 5000
Accuracy class		0.03
Rated output (RO)	mV / V	2.0 ± 0.003
Non-Linearity	%RO	± 0.03
Hysteresis error	%RO	± 0.03
Non-Repeatability	%RO	± 0.02
Temperature effect on zero	%RO / 10°C	± 0.02
Temperature effect on sensitivity	%RO / 10°C	± 0.02
Safe load limit	%E _{max}	120
Ultimate load	%E _{max}	200
Creep error (30 min.)	%RO	0.03
Excitation voltage, maximum	V (DC)	15
Input resistance	Ω	400 ± 20
Output resistance	Ω	352 ± 5
Insulation resistance (at 50 V DC)	MΩ	≥ 5000
Compensated temperature range	°C	- 10...+ 40
Operating temperature range	°C	- 30...+ 70
Material		BT610 Alloy steel / BT610S Stainless steel
Protection class		IP 66
Cable		Length: 5 m / diameter: 5 mm

Dimensions (mm)



Capacity	A	B	C	D
100~750 kg	51	76.2	19.1	M12
1 t	51	76.2	25.4	M12
1.5 ~ 5 t	76.2	100.4	31.8	M20x1.5

Color Codes

Function	Colors
+ excitation	blue
- excitation	black
+ signal	white
- signal	red
shield	

W Modules



LA54-03