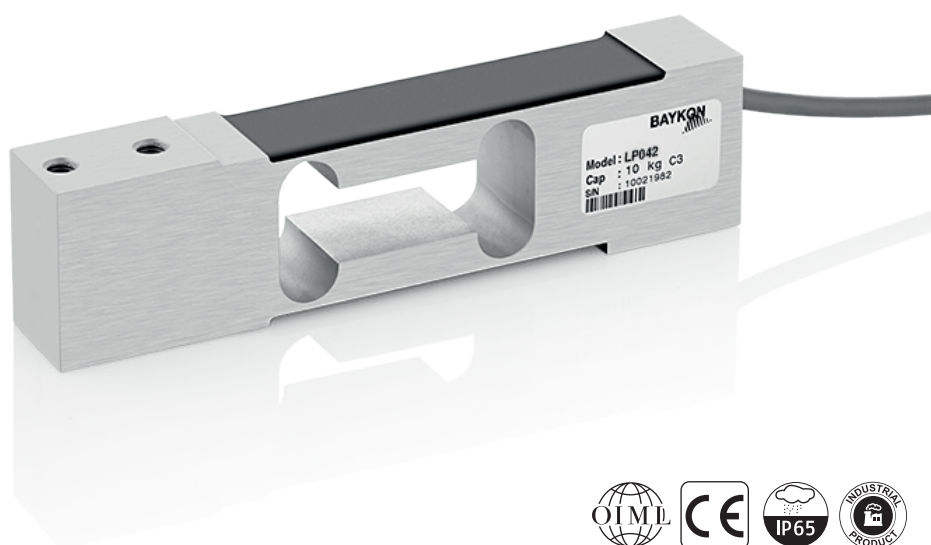
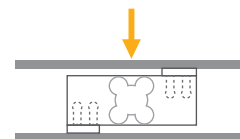


LP042

Single Point Load Cell



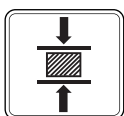
Applications



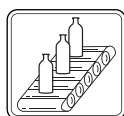
Large Bench



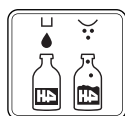
Small Bench



Testing
Machines



Dynamic
Weighing



Packing & Filling
Applications

Key Features

- Capacities: 8~100 kg
- OIML approved (20~100 kg)
- Aluminium construction
- Protection class: IP65
- Maximum platform size;
loading acc.to OIML R76 : 400 x 400 mm

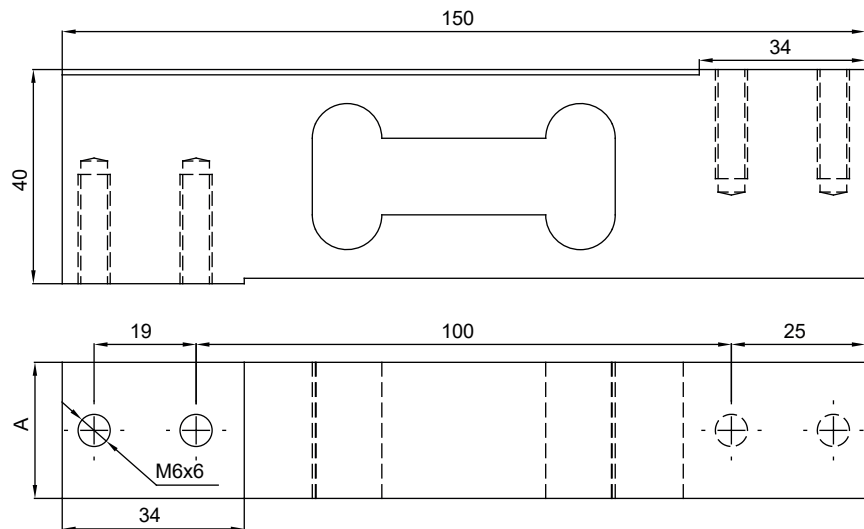
LP042 is OIML approved aluminium single point load cell with IP65 protection. It is suitable for bench scales, counting scales, balances, packing machines and testing devices for force measurement.

Technical Specifications

| | | | |
|---|-------------------|---|------------------------------|
| Model | | LP042 | |
| Capacity (E _{max}) | kg | 8 / 10 / 15 | 20 / 30 / 50 / 60 / 75 / 100 |
| Accuracy class according to OIML R60 | | Non Approved | C3 |
| Rated output (R0) | mV / V | | 2.0 ± 0.2 |
| Maximum number of load cell verification intervals (n _{LC}) | | | 3000 |
| Minimum load cell verification interval (v _{min}) | | | E _{max} / 10000 |
| Combined error | %R0 | | ± 0.0230 |
| Minimum dead load | %E _{max} | | 0 |
| Safe load limit | %E _{max} | | 150 |
| Ultimate load | %E _{max} | | 300 |
| Zero balance | %R0 | | ± 2.0 |
| Excitation voltage, recommended | V (DC) | | 10 |
| Excitation voltage, maximum | V (DC) | | 15 |
| Input resistance | Ω | | 404 ± 10 |
| Output resistance | Ω | | 350 ± 3 |
| Insulation resistance (at 50 V DC) | MΩ | | ≥ 2000 |
| Compensated temperature range | °C | | - 10...+ 40 |
| Operating temperature range | °C | | - 20...+ 60 |
| Material | | | Aluminium |
| Protection class | | | IP65 |
| Cable | | Shielded, 4 conductor cable, length: 1.8 m / diameter: 5 mm | |
| Maximum platform size; loading acc.to OIML R76 | mm | 400 x 400 | |

Dimensions (mm)

| Capacity kg | 8-30 | 50-100 |
|-------------|------|--------|
| A | 20 | 25 |



Color Codes

| Function | Colors |
|----------|--------|
| + input | blue |
| + output | white |
| - input | black |
| - output | red |
| shield | |