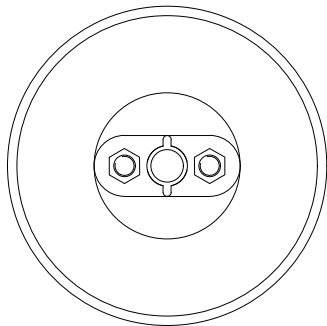
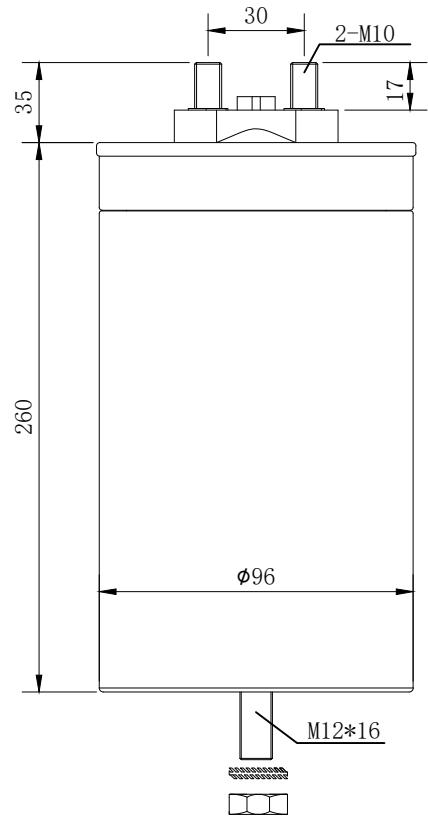



AC-Filter Capacitor			
<a href="#">Nominal values</a>			
Rated capacitance	Cn	[ $\mu$ F]	100
Rated capacitance		[%]	+5/-5%
Rated voltage	Un	[Vdc]	750
Ripple voltage	Ur	[Vac]	
Rated current	I <sub>max</sub>	[A <sub>max</sub> ]	80
Maximun repetitive peak current	I <sub>p</sub>	[kA]	5
Maximun surge current	I <sub>s</sub>	[kA]	12.5
Tangent of the loss angle	tg $\delta$	[x10 <sup>-3</sup> ]	$\leq 2$ (1V, 100Hz, 20° C)
ESR	R <sub>s</sub>	[m $\Omega$ ]	1.5 (100Hz, 1Vrms, 20°C)
Capacitor inductance	L <sub>s</sub>	[nH]	$\leq 200$
<a href="#">Maximum rating</a>			
Non-recurrent peak voltage	U <sub>s</sub>	[V <sub>p</sub> ]	
Recurrent surge voltage slop	(du/dt) <sub>s</sub>	[V/ $\mu$ s]	50
<a href="#">Test values</a>			
between terminals	U <sub>t-t</sub>	[Vdc]	1125 - 10s
between terminals and case	U <sub>t-c</sub>	[V]	3000 - 50Hz - 60s
<a href="#">Climatic conditions</a>			
Cooling			natural ventilation
Operating temperature	$\theta_{amb}$	[°C]	$\theta_{max} = 85^{\circ}\text{C}$ / $\theta_{min} = -40^{\circ}\text{C}$
Storage temperature	$\theta$	[°C]	-55 / +85
<a href="#">Expected life time</a>			
Expected lifetime		[h]	$\geq 100,000$
Failure quota	$\lambda$	FIT	300
<a href="#">Mechanical values</a>			
Weight		[kg]	2
material			Al
<a href="#">Terminals</a>			
Type			Copper
Screw bolt			2-M10 x 17
Tightening torque max.		[Nm]	M10=10Nm; M12=15Nm;
<a href="#">Mounted</a>			vertical or horizontal or upside-down
<a href="#">Technology</a>			
Dielectric			metallised polypropylene self-healing
Execution according to			IEC61881, IEC 61071



	Signature		C751072GR9J729IN3S			 深圳市创仕鼎电子有限公司
Design	Yiqiu Fu	2022. 09. 10				
Technics	Yiqiu Fu	2022. 09. 10	Phase	No.		C75-750VAC-100uF
Approve			A		1	