

规格承认书

SPECIFICATION FOR APPROVAL

客户名称 Customer name:			
产品名称 Product name:	C86 copper sheet resonance capacitor		
产品编码 Product code:	C8621656MHK2Y2YCWC C8610659L9K262YCWC C8660559L9K262YCWC C8630550L9K272YCWC		
产品规格 Rated:	C86-500Va.c.-21 μ F K C86-700Va.c.-10 μ F K C86-700Va.c.-6.5 μ F K C86-750Va.c.-3.0 μ F K		
日期 Date:	2023.6.14		
版本 Version number:	V1.0		
SICHUAN CHUANGSHIDING ELECTRONICS CO.,LTD.		Confirmed by Customer	
拟制	审核	批准	
张锡炼	付一丘	饶念田	

四川仕鼎电子有限公司

SICHUAN CHUANGSHIDING ELECTRONICS CO.,LTD.

Address: Second-stage of West Silicon Valley, Yulan Avenue, New Town Industrial, Huaying City, Sichuan, China

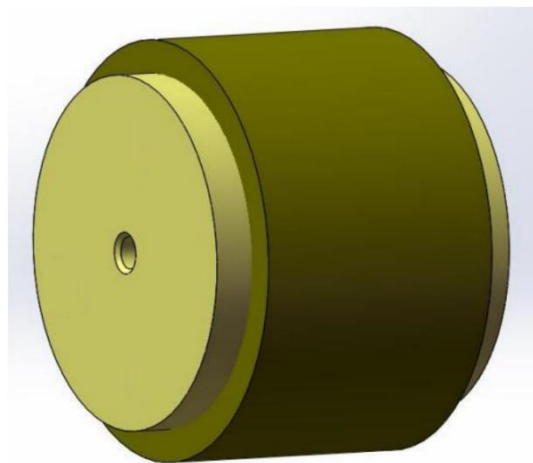
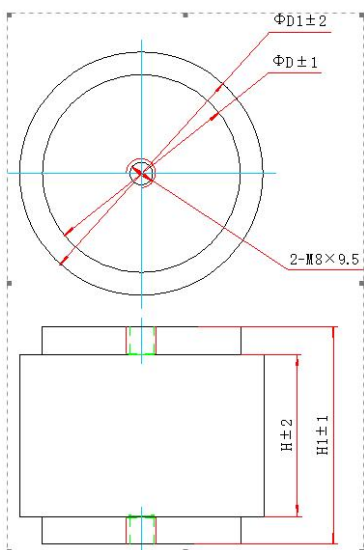
TEL: 0826-4690706 4856058

HTTP://www.csdcapacitor.com

E-MAIL:sales@csdcapacitor.com

1. 安装尺寸及外形图 (CONFIGURATION & DIMENSIONS)

Unit:mm



No.	Part Number	item	D	D 1	H	H1	leading-out terminal
1	C8621656MHK2Y2YCWC	C86-500Va.c.-21 μ F K	Φ 75	Φ 89	55	72	M8*1.25*9.5 mm with SS helicoil M8*1.25* 9.5mm 螺纹 内嵌不锈钢螺纹护套
2	C8610659L9K262YCWC	C86-700Va.c.-10 μ F K	Φ 60	Φ 95	55	72	
3	C8660559L9K262YCWC	C86-700Va.c.-6.5 μ F K	Φ 60	Φ 80	55	72	
4	C8630550L9K272YCWC	C86-750Va.c.-3.0 μ F K	Φ 60	Φ 80	55	72	

2. 内部接线 interior design

单相电容器 Single-phase capacitor

3. 工艺要求 Process requirements

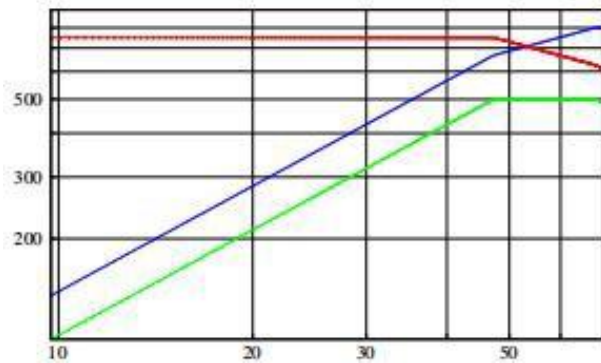
- ① 外壳光滑，无变形，表面无划伤，环氧树脂面平整光滑；
The shell is smooth, no deformation, no scratch on the surface, and the epoxy resin surface is flat and smooth;
- ② 引出铜电极平整、光滑，连接牢固、无松动；
The leading copper electrode is flat and smooth, and the connection is firm and not loose.
- ③ 颜色：白色；
Color: White;
- ④ 标志牢固。
Logo is fastness .

4. 电气参数 Electrical parameters

型号规格	specification	C86-500Vac-21 μ F	C86-700Vac-10 μ F	C86-700Vac-6.5 μ F	C86-750Vac-3.0 μ F
特点	feature	具有高压、高频、高 dv/dt 特性，能承受大电流。电极接触面积大，便于散热。 With high voltage, high frequency, high dv/dt characteristics, can withstand large current. Large electrode contact area, easy to heat dissipation.			
结构	structure	铝箔、金属化膜内串结构，铜柱引出电极。 Aluminum foil, metallized film inside with series structure, copper column leading electrode.			
参照标准	Technical standard	GB/T3984.1(IEC60110-1)			
工作温度	Continuous operating temperature range	-25 $^{\circ}$ C ~ +85 $^{\circ}$ C			
标称电容量	Capacitance	21 μ F	10 μ F	6.5 μ F	3.0 μ F
电容量偏差	Tolerance	$\pm 10\%$ (K)	$\pm 10\%$ (K)	$\pm 10\%$ (K)	$\pm 10\%$ (K)
额定容量	rated capacity	500kvar	500kvar	500kvar	500kvar
额定电压	Rated voltage	500Vrms	700Vrms	700Vrms	750Vrms
测试电压	Test Voltage	1250Vd. c. 5s	2450Vd. c. 5s	2450Vd. c. 5s	2625Vd. c. 5s
绝缘电阻	Insulation resistance	$\geq 10000s$	$\geq 10000s$	$\geq 10000s$	$\geq 10000s$
损耗角正切	loss tangent	$\leq 5 \times 10^{-4}$	$\leq 5 \times 10^{-4}$	$\leq 5 \times 10^{-4}$	$\leq 5 \times 10^{-4}$
最大电流	I _{max}	1000A	1000A	1000A	800A
频率范围	Operating frequency range	15-15 (kHz)	16-32 (kHz)	26-51 (kHz)	47-68 (kHz)
自身电感	self-inductance	$\leq 10nH$			

5. 特性曲线 characteristic curve

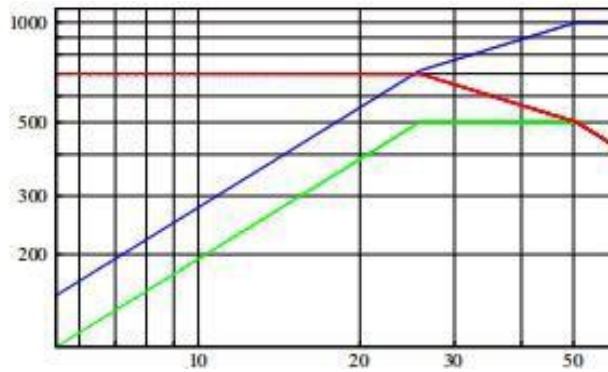
C86-750Vac-3.0 μ F 电压、电流、容量—频率特性曲线



频率: kHz

电流 (A): — 电压 (Vrms): — 容量 (kvar): —

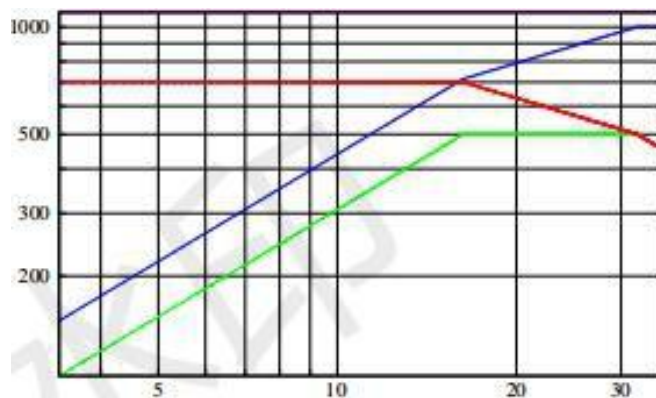
C86-700Vac-6.5 μ F 电压、电流、容量—频率特性曲线



频率: kHz

电流 (A): — 电压 (Vrms): — 容量 (kvar): —

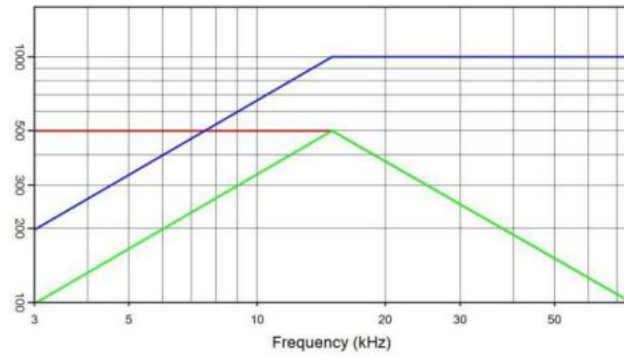
C86-700Vac-10 μ F 电压、电流、容量—频率特性曲线



频率: kHz

电流 (A): — 电压 (Vrms): — 容量 (kvar): —

C86-500Vac-21 μ F 电压、电流、容量—频率特性



21 μ F **500 V_{rms}** **1000 A_{rms}** **500 kVA_r**
 I(A) ——— Q(kVA_r) ——— V_{rms} ———