

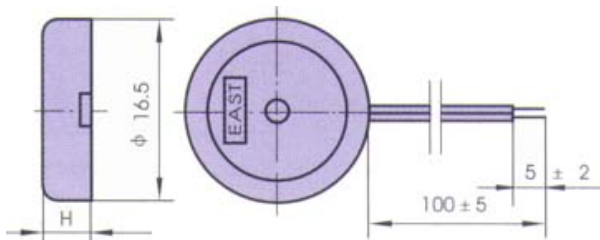
• TFM-23(23A, 23T)



FEATURES:

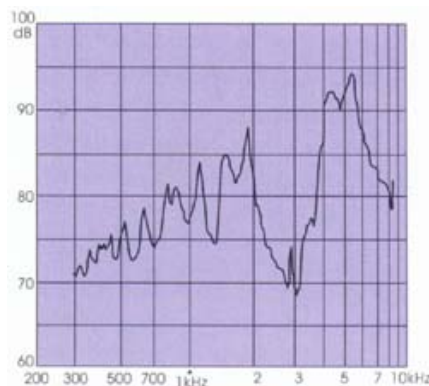
- Mini size structure
- Compact and light
- Multiple application

DIMENSIONS: (Unit: mm)

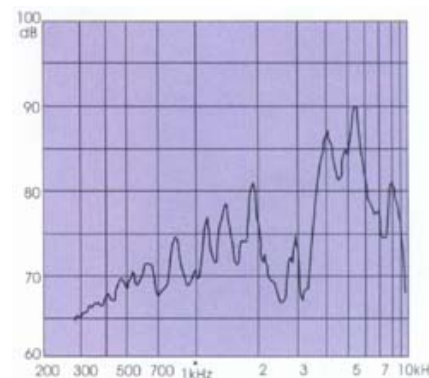


TFM-23 H=4 TFM-23A H=5 TFM-23T H=3.3

CHARACTERISTICS:



TFM-23 9V_{P-P} Square Wave / 10cm



TFM-23T 9V_{P-P} Square Wave / 10cm

ELECTRICAL SPECIFICATIONS :

Model No.	TFM-23	TFM-23A	TFM-23T
Min. Sound Pressure Level (dB)	80 /4kHz/9V _{P-P} Square Wave/10cm		72 /4kHz/9V _{P-P} Square Wave /10cm
Max. Consumption (mA)	3 /4.0kHz/9V _{P-P} Square Wave	2.5 /4.0kHz/9V _{P-P} Square Wave	1.5 /4.0kHz/9V _{P-P} Square Wave
Resonant Frequency (kHz)	4.0 ± 0.5		
Capacitance at 120Hz (nF)	14 ± 30%	9.5 ± 30%	9.5 ± 30%
Allowable Input Voltage (V _{P-P})	25		
Operating Temperature (°C)	-20 ~ +70		
Weight (g)	1.2		
Case Material/Colour	PC/Black	ABS/Black	

PACKING INFORMATION :

Packing :	8000 pcs per export carton
Carton Size :	47 X 30.5 X 21 cm
G. Weight :	11.1 kgs
N. Weight :	9.6 kgs

• **TFM-59DA₁(DA₂)**

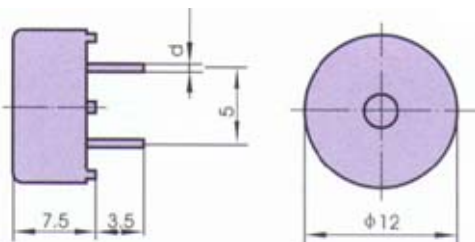


FEATURES:

- Super mini size
- Low current consumption
- High output

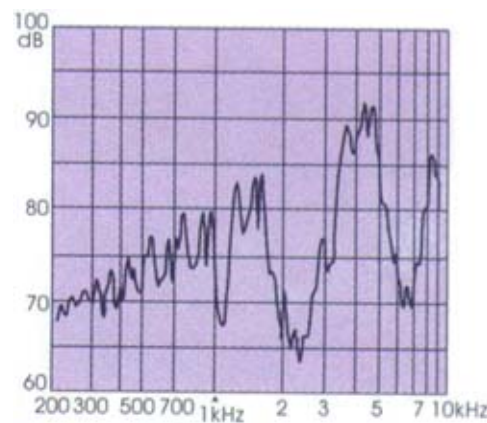
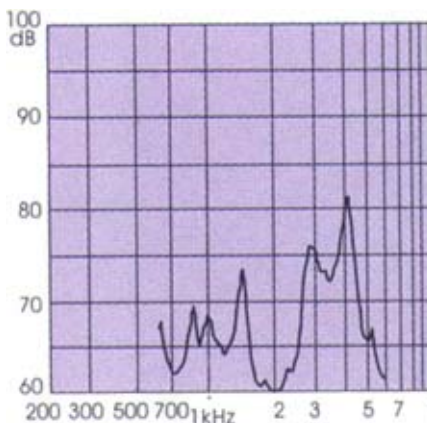
TFM59DA-1	d=Ø0.8
TFM-59DA-2	d=Ø0.7

DIMENSIONS: (Unit: mm)



TFM-59D

CHARACTERISTICS:



TFM-59DA-1 3V_{P-P} Square Wave /10cm TFM-59DA-2 12V_{P-P} Square Wave /10cm

ELECTRICAL SPECIFICATIONS :		
Model No.	TFM-59DA-1	TFM-59DA-2
Min. Sound Pressure Level (dB)	70/4.0kHz/3V _{P-P} Square Wave /10cm	80/4.0kHz/12V _{P-P} Square Wave /10cm
Max. Consumption (mA)	3/4.0kHz/3V _{P-P} Square Wave	6/4.0kHz/12V _{P-P} Square Wave
Resonant Frequency (kHz)	4.0 ± 0.5	
Capacitance at 1000Hz (nF)	11 ± 30%	
Allowable Input Voltage (V _{P-P})	25	
Operating Temperature (°C)	-20 ~ +70	
Weight (g)	1	
Case Material/Colour	PC/Black	
PACKING INFORMATION :		
Packing :	5000 pcs per export carton	
Carton Size :	47 X 30.5 X 25 cm	
G. Weight :	6.5 kgs	
N. Weight :	5 kgs	