

SUPER FAST RECTIFIERS

VOLTAGE RANGE: 50 --- 600 V
CURRENT: 3.0 A

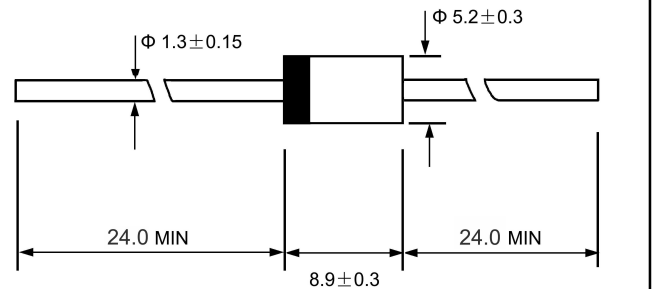
FEATURES

- ◇ Low cost
- ◇ Low leakage
- ◇ Low forward voltage drop
- ◇ High current capability
- ◇ Easily cleaned with alcohol, Isopropanol and similar solvents
- ◇ The plastic material carries U/L recognition 94V-0

MECHANICAL DATA

- ◇ Case: JEDEC DO--27, molded plastic
- ◇ Terminals: Axial lead ,solderable per MIL- STD-202, Method 208
- ◇ Polarity: Color band denotes cathode
- ◇ Weight: 0.041 ounces, 1.15 grams
- ◇ Mounting position: Any

DO - 27



Dimensions in millimeters

MAXIMUM RATINGS AND ELECTRICAL CHARACTERISTICS

Ratings at 25°C ambient temperature unless otherwise specified.

Single phase, half wave, 60 Hz, resistive or inductive load. For capacitive load, derate by 20%.

		SF31	SF32	SF33	SF34	SF35	SF36	SF37	SF38	UNITS
Maximum recurrent peak reverse voltage	V_{RRM}	50	100	150	200	300	400	500	600	V
Maximum RMS voltage	V_{RMS}	35	70	105	140	210	280	350	420	V
Maximum DC blocking voltage	V_{DC}	50	100	150	200	300	400	500	600	V
Maximum average forward rectified current 9.5mm lead length, @ $T_A=75^\circ C$	$I_{F(AV)}$	3.0								A
Peak forward surge current 8.3ms single half-sine-wave superimposed on rated load @ $T_J=125^\circ C$	I_{FSM}	125.0								A
Maximum instantaneous forward voltage @ 3.0A	V_F	0.95			1.25		1.7			V
Maximum reverse current @ $T_A=25^\circ C$ at rated DC blocking voltage @ $T_A=100^\circ C$	I_R	5.0								μA
Maximum reverse recovery time (Note1)	t_{rr}	35								ns
Typical junction capacitance (Note2)	C_J	100				50				pF
Typical thermal resistance (Note3)	$R_{\theta JA}$	20								$^\circ C/W$
Operating junction temperature range	T_J	- 55 ----- + 150								$^\circ C$
Storage temperature range	T_{STG}	- 55 ----- + 150								$^\circ C$

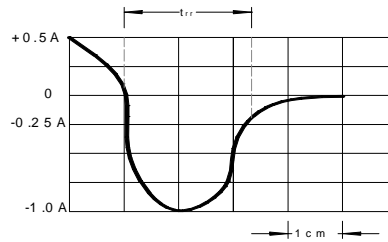
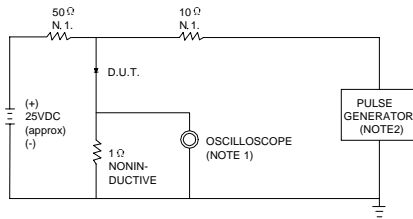
NOTE: 1. Measured with $I_F=0.5A$, $I_R=1A$, $I_{rr}=0.25A$.

2. Measured at 1.0MHz and applied reverse voltage of 4.0V DC.

3. Thermal resistance from junction to ambient.

www.galaxycn.com

FIG.1 -- TEST CIRCUIT DIAGRAM AND REVERSE RECOVERY TIME CHARACTERISTIC

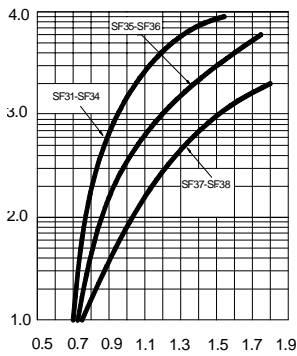


NOTES: 1. RISE TIME = 7ns MAX. INPUT IMPEDANCE = 1MΩ .22pF.
 2. RISE TIME = 10ns MAX. SOURCE IMPEDANCE = 50 Ω .

SET TIME BASE FOR 10 ns/cm

FIG.2 -- TYPICAL FORWARD CHARACTERISTIC

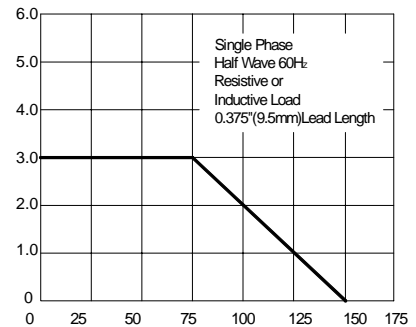
INSTANTANEOUS FORWARD CURRENT
AMPERES



INSTANTANEOUS FORWARD VOLTAGE, VOLTS

FIG.3 -- FORWARD DERATING CURVE

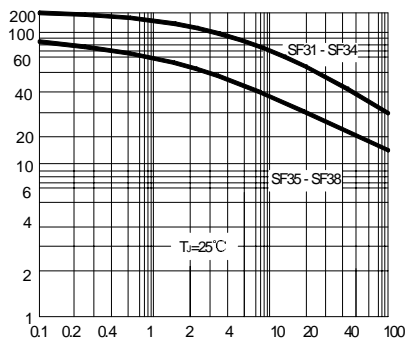
AVERAGE FORWARD CURRENT
AMPERES



AMBIENT TEMPERATURE, °C

FIG.4 -- TYPICAL JUNCTION CAPACITANCE

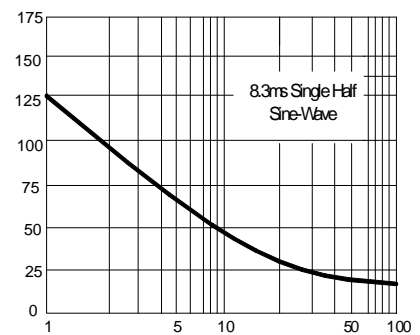
JUNCTION CAPACITANCE, pF



REVERSE VOLTAGE, VOLTS

FIG.5 -- PEAK FORWARD SURGE CURRENT

PEAK FORWARD SURGE CURRENT
AMPERES



NUMBER OF CYCLES AT 60Hz