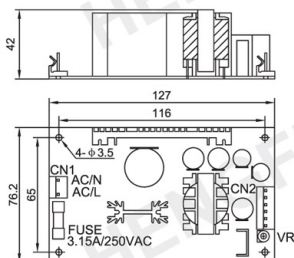
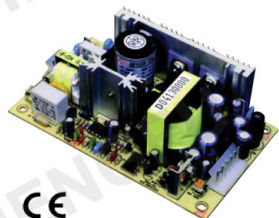
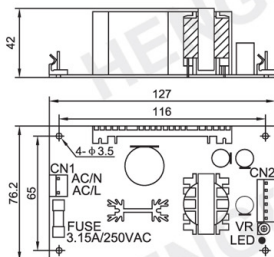
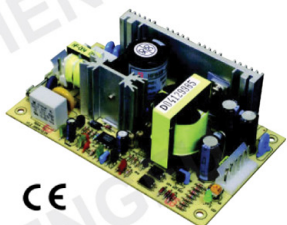


65W 1~3 Output Open Frame Series

- Universal AC input / full range
- High reliability
- Miniature PCB structure
- Built-in EMI filter
- 100% full load burn-in test
- Protections: overload/ over voltage/ short circuit
- Free air cooling convection
- 5 years limited warranty
- 127 x 76.2 x 42(mm)



AC input voltage range	85~264VAC (120~370VDC)
Inrush current	cold start, 20A/115V, 40A/230V
Input leakage current	< 1mA/ 230VAC
Load regulation	V ₁ : ≤ ± 1%, V ₂ , V ₃ : ≤ ± 10%
Output voltage adjust range	single output: ± 10%, multi-output: V ₁ : ± 5%
Output overload protection	105~150%, hiccup mode, auto recovery
Output over voltage protection	115~150%, shut off, re-power on to recover
Withstand voltage	I/P -O/P: 3.0KVAC/1min I/P -F/G: 1.5KVAC/1min O/P-F/G: 0.5KVAC/1min
Rise, Hold up time	50ms, 20ms@full load (typical)
Operating temperature	-20°C~+50°C
Safety standards	meet GB4943, UL60950, EN60950
EMC standards	meet GB9254, EN55022 classB, EN61000
Connection	2P/ 7.92mm, 6P/ 3.96mm pitch
Weight	0.25kg/pcs (HF65W-SPL)

Dual Output

Model	DC Output		R&N	Efficiency
HF65W-DPL-A	5V	0.4~7.0A	80mV	78%
	12V	0.2~3.2A	120mV	
HF65W-DPL-B	5V	0.4~6.0A	80mV	81%
	24V	0.2~2.6A	150mV	