

I.D.C Socket Series

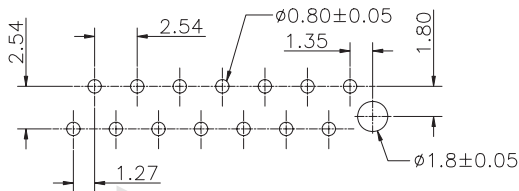
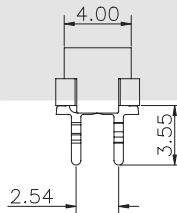
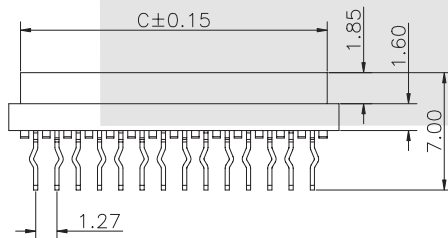
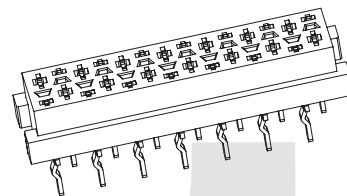
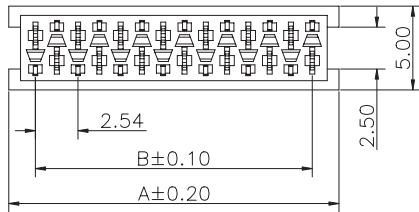
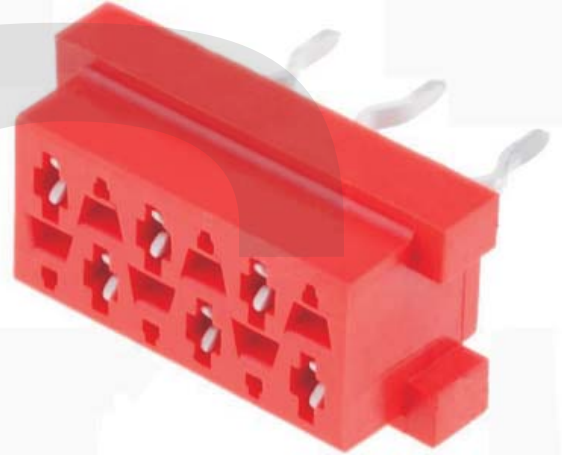
KLS1-204F Connectors micro-match 2.54mm

Electrical Characteristics:

Current Rating: 1 AMP
Insulator Resistance: 1000M Ohm min. at DC 250V
Contact Resistance: 20m Ohm max. at DC 100mA
Operating Temperature: -45°C~+105°C

Material:

Housing: PBT UL94V-0
Contacts: Brass
Plating: Selective gold plated: gold plated on mating area and Nickel plated on wire cutting area
Gold plated: 3u" over 50u" nickel
Cable: 1.27mm (0.050") pitch flat cable



PCB Layout

Part No.	A	B	C
04	7.00	3.81	5.60
06	9.54	6.35	8.14
08	12.08	8.89	10.68
10	14.62	11.43	13.22
12	17.16	13.97	15.76
14	19.70	16.51	18.30
16	22.24	19.05	20.84
18	24.78	21.59	23.38
20	27.32	24.13	25.92
22	29.86	26.67	28.46
24	32.40	29.21	31.00
26	34.94	31.75	33.54

ORDER INFORMATION

Product NO.: KLS1-204F-XX-R

Pos. NO. _____ Insulator Color: R=Red
Connectors micro-match 2.54mm Series _____ Number of Contacts: XX=06-26Pin