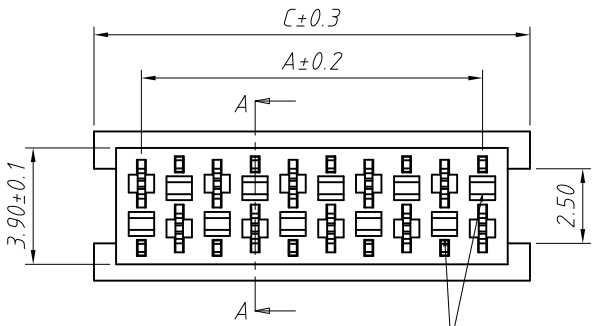
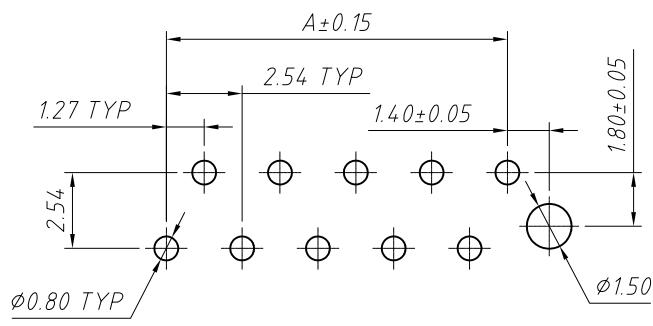


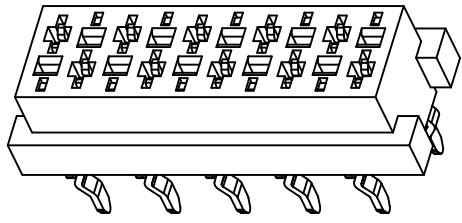
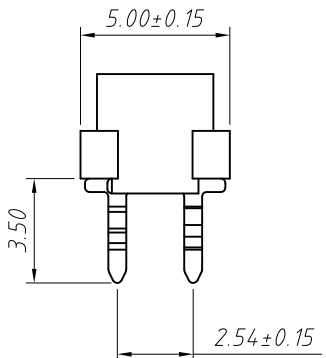
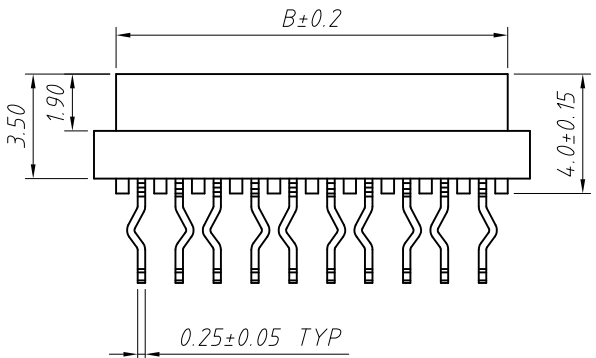
1  
RoHS Compliance



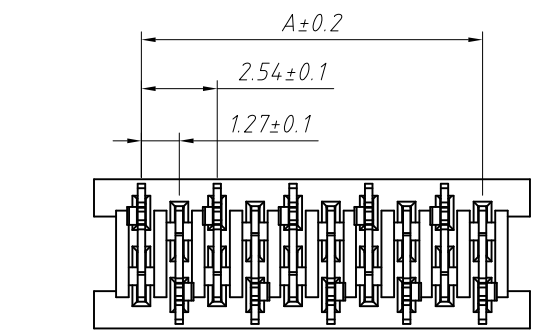
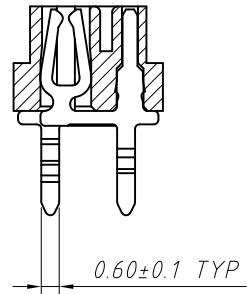
REFERENCE MATING INTERFACE PATTERN:  
1.27 STAGGERED PITCH×1.5 ROW-DISTANCE



Recommended P.C.B Layout



SECTION A-A



Material:  
Housing:PBT Glass Fiber, UL94V-0  
Contacts:Phosphor Bronze  
Plating:Sn over Ni

Electrical Characteristics:  
Current Rating: 1.0 AMP  
Contact Resistance: 20m Ohm max.  
Insulator Resistance: 1000M Ohm min.  
Withstand voltage:500V AC  
Operating Temperature: -40°C ~ +105°C

Poles	DIM.A	DIM.B	DIM.C	Qty/Tube
04	3.81	5.50	6.99	82
06	6.35	8.04	9.53	60
08	8.89	10.58	12.07	48
10	11.43	13.12	14.61	39
12	13.97	15.66	17.15	33
14	16.51	18.20	19.69	29
16	19.05	20.74	22.23	26
18	21.59	23.28	24.77	23
20	24.13	25.82	27.31	21
22	26.67	28.36	29.85	19
24	29.21	30.90	32.39	17
26	31.75	33.44	34.93	16

Order Information:  
L-KLS1-204F-XX-R-□  
L: RoHS  
Pitch:2.54mm  
XX-No.of 04~26pin  
Color:R-Red B-Black  
Material:  
A=PBT D=PA9T E=PA46

ANGLE TOLERANCE	PROJECTION	Description:
±3°		Micro Match Socket Connector Female DIP 180 Type
GENERAL TOLERANCE	UNITS	mm
x.x ±0.30	SHEET SIZE	A4
x.xx ±0.20	Draw:	Daniel 2018-07-10
x.xxx ±0.10	Check:	Daniel 2018-07-10

NingBo KLS ELECTRONIC CO.,LTD.