

IC Socket Series

KLS1-216 IC SOCKET 2.54mm(0.100")

Electrical Characteristics:

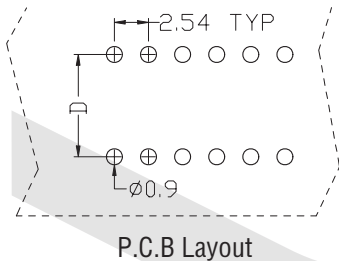
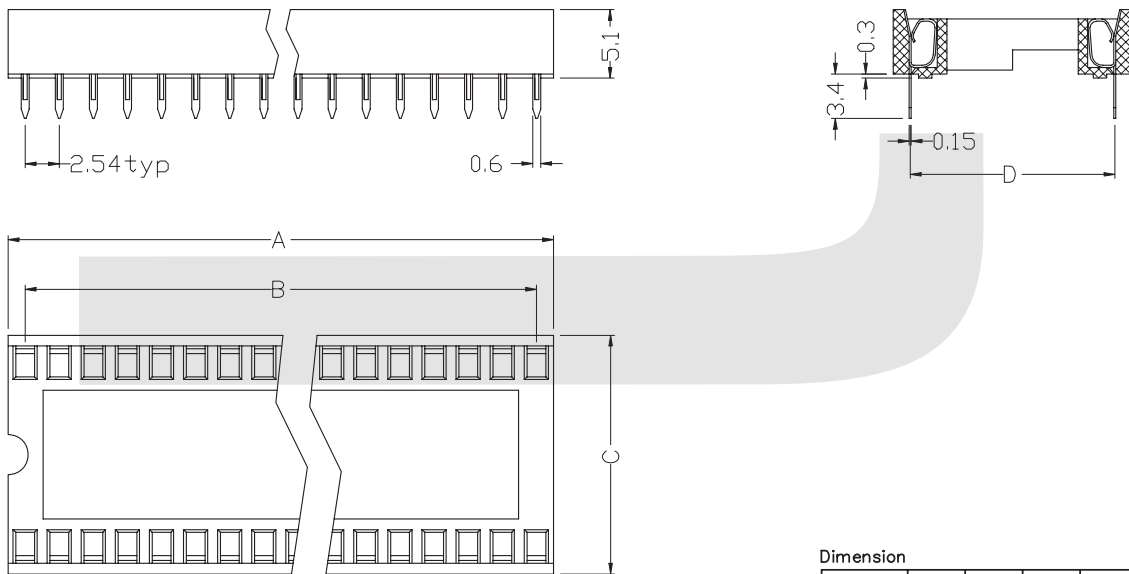
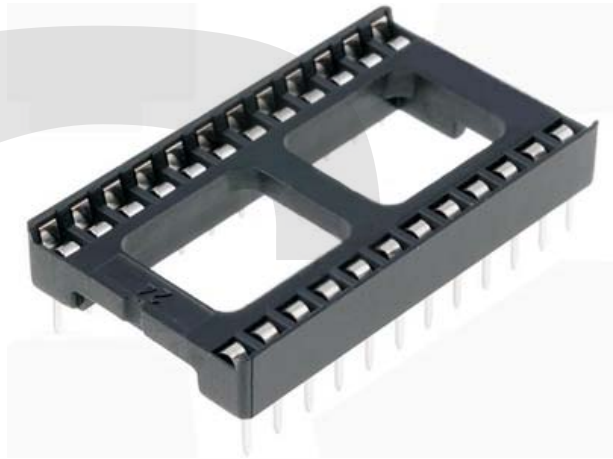
Current Rating: 1 AMP
 Insulator Resistance: 5000MΩmin. at DC 500V
 Contact Resistance: 20mΩmax. at DC 100mA
 Operating Temperature: -45°C~+105°C

Material:

Housing: 30% Glass filled PBT UL94V-0
 Contacts: Phosphor Bronze
 Plating: Tin plated: 100u" over 50u" nickel

Features:

*IC Socket Strips - with screw machind pins



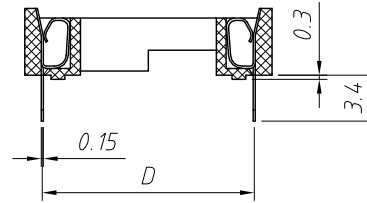
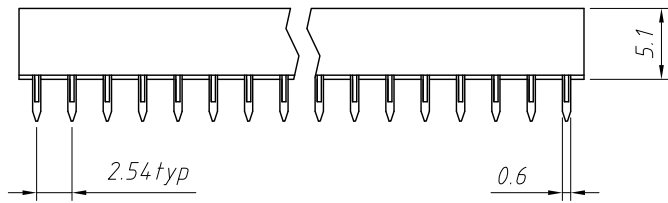
Dimension

position	A	B	C	D
08	10.16	7.62	10.16	7.62
14	17.78	15.24	10.16	7.62
16	20.32	17.78	10.16	7.62
18	22.86	20.32	10.16	7.62
20	25.40	22.86	10.16	7.62
24	30.48	27.94	10.16	7.62
24	30.48	27.94	17.78	15.24
28	35.56	33.02	10.16	7.62
28	35.56	33.02	17.78	15.24
32	40.54	38.10	17.78	15.24
40	50.80	48.26	17.78	15.24
42	53.21	50.80	17.78	15.24
48	60.80	58.42	17.78	15.24

ORDER INFORMATION

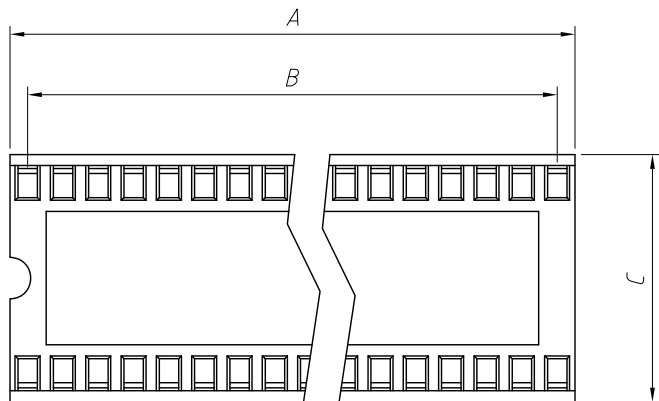
Product No.: KLS1-216-XX-D

Pos. No. _____ D=15.24mm plastic space Without D=7.62mm plastic space
 IC Socket 2.54mm Series _____ Number of Contacts: XX=08~48Pin



Material:
 Housing: PBT UL 94V-0
 Contacts: Phosphor Bronze
 Plating: Tin plated 100u" over 50u" nickel

Electrical Characteristics:
 Current Rating: 1.0 AMP
 Insulator Resistance: 5000M Ω min
 Contact Resistance: 20m Ω max.
 Operating Temperature: -40°C ~ +105°C

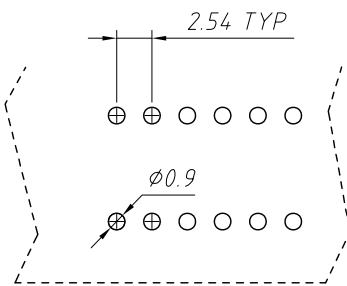


Position	A	B	C	D
08	10.16	7.62	10.16	7.62
14	17.78	15.24	10.16	7.62
16	20.32	17.78	10.16	7.62
18	22.86	20.32	10.16	7.62
20	25.40	22.86	10.16	7.62
24	30.48	27.94	10.16	7.62
24	30.48	27.94	17.78	15.24
28	35.56	33.02	10.16	7.62
28	35.56	33.02	17.78	15.24
32	40.54	38.10	17.78	15.24
40	50.80	48.26	17.78	15.24
42	53.21	50.80	17.78	15.24
48	60.80	58.42	17.78	15.24

Order Information:

L-KLS1-216-XX-D

L: RoHS
 IC Socket
 XX-No. of 06 ~ 48pin
 Type: _____
 With D = 15.24mm
 Without D = 7.62mm



PCB Layout

GENERAL TOLERANCE	PROJECTION		Description:
X. ± 0.50	UNITS	mm	2.54mm Pitch IC Socket Connector
.X ± 0.25	SCALE	1:1	
.XX ± 0.10	Draw by:	Jenny	KLS P/N: L-KLS1-216-XX-D
ANGLE TOLERANCE	Check by:		NingBo KLS ELECTRONIC CO.,L TD.
X. $\pm 5^\circ$	Date	2018-03-01	
.X $\pm 3^\circ$	SHEET	1 OF 1	
.XX $\pm 2^\circ$			