

# Terminal Blocks

## Wago LED connectors

KLS2-L26

LED Connector Pitch 6.00mm

### Electrical specifications:

Insulation material:PPA GF UL94V-0

Contact material:Copper alloy

Contact plating:tin-plated

Pin spacing :6.00mm

Color: gray

Hight:5.6mm

Working temperature:-40℃~+105℃

Rated voltage :250V

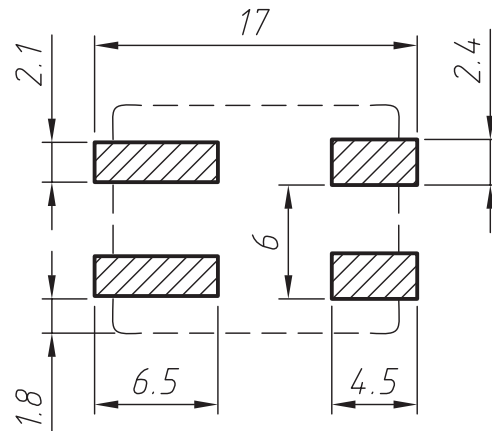
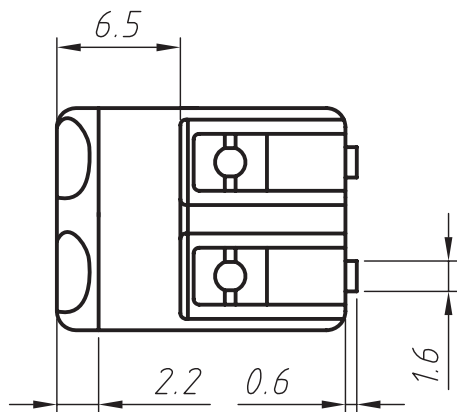
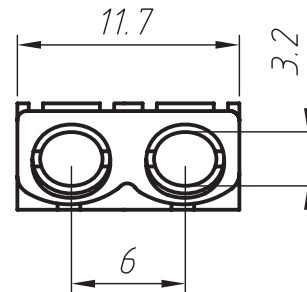
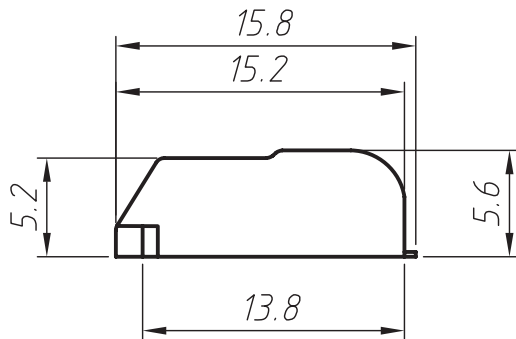
Rated current:12A

Withstand voltage:AC2500V, 1minutes

Insulation impedance:DC500V 500MΩ

Impulse withstand voltage:2000V 1.2/50us,Each is negative 3

Wire gauge:20-16AWG(0.5-1.5mm<sup>2</sup>)



Product NO.: KLS2-L26-02P

Pos. NO.

No. of poles :01P or 02P or 03P

LED Connector Pitch 6.00mm