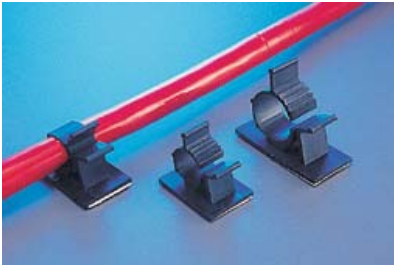
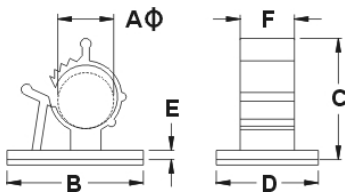


Cable Clamp Series

KLS8-0411 Adjustable Cable Clamp Series



Material: UL approved Black Nylon 66,94V-2 (Backed with adhesive tape)
One size of adjustable clamps can accommodate various cables that
Easy to install, open for unlimited usage.
Color: Black
Unit:mm



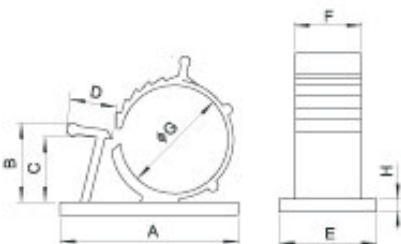
| Item No. | A mm | B | C | D | E | F | Packing |
|----------|-----------|------|------|------|-----|------|---------|
| AP-0810 | 7.9~10.3 | 25.4 | 22.2 | 19.1 | 1.6 | 10.2 | 100pcs |
| AP-1013 | 10.0~12.5 | 31.8 | 27.8 | 19.1 | 1.6 | 10.2 | |
| AP-1316 | 12.6~15.4 | 38.1 | 31.8 | 19.1 | 1.6 | 12.7 | |
| AP-1720 | 16.5~20.1 | 42.0 | 44.5 | 25.4 | 1.6 | 12.7 | |
| AP-2225 | 22.2~25.4 | 42.0 | 44.5 | 25.4 | 1.6 | 12.7 | |

KLS8-0411 Adjustable Cable Clamp Series

Material: UL approved Black Nylon 66,94V-2 (Backed with adhesive tape)
One size of adjustable clamps can accommodate various cables that
Easy to install, open for unlimited usage.
Color: Black

Unit:mm

單位: mm



| 型號 Item No. | A | B | C | D | E | F | G | H | 包裝 Packing |
|----------------|-------|-------|-------|------|-------|-------|------|------|-------------------|
| CAWC-1 | 24.6 | 10.22 | 7.64 | 8.0 | 18.5 | 10.2 | 11.3 | 2.45 | 100pcs 1000pcs |
| CAWC-2 | 24.9 | 12.22 | 9.76 | 7.25 | 14.93 | 10.0 | 15.2 | 2.4 | |
| CAWC-3 | 34.25 | 14.01 | 12.58 | 8.8 | 18.5 | 12.7 | 20.7 | 2.5 | |
| CAWC-4 | 35.8 | 16.06 | 14.48 | 10.1 | 18.7 | 12.6 | 23.9 | 2.45 | |
| CAWC-5 | 39.4 | 18.79 | 17.22 | 10 | 19.4 | 12.86 | 28.5 | 2.5 | |

材 質: UL合格之NYLON 66, 防火等級94V-2。
用 途: 背膠式,可快速拆卸,固定電纜維修方便,不占空間。