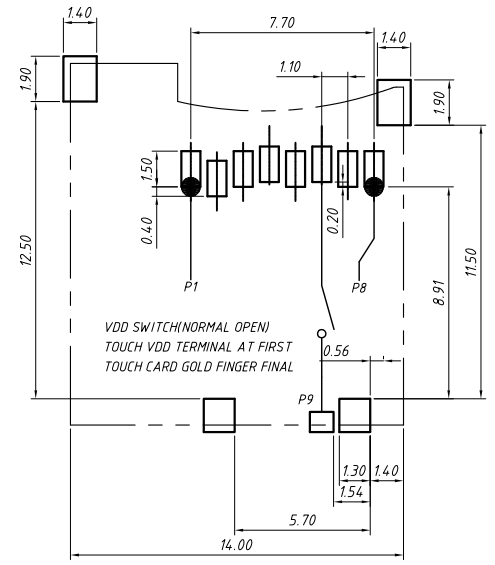
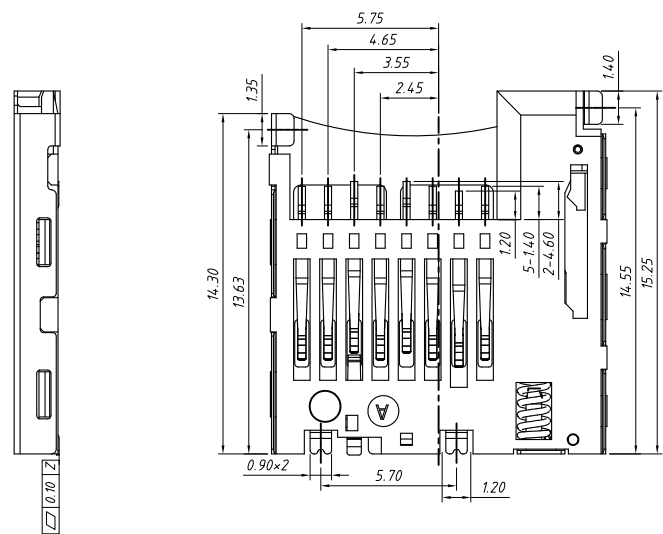
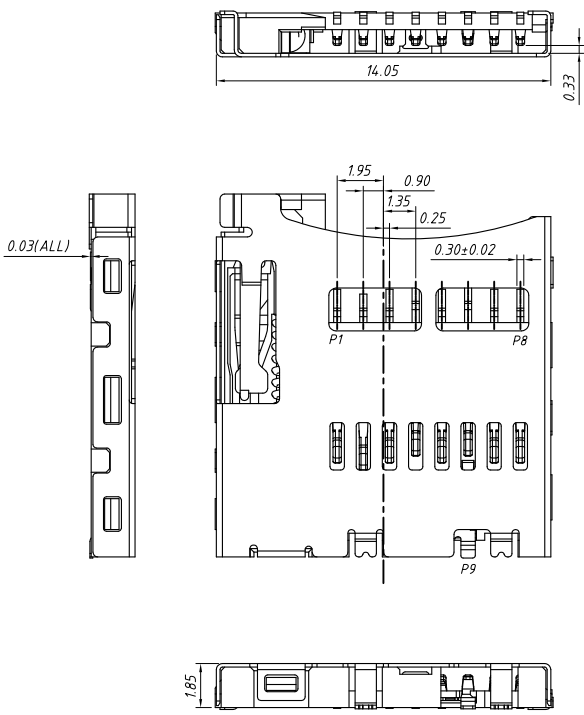


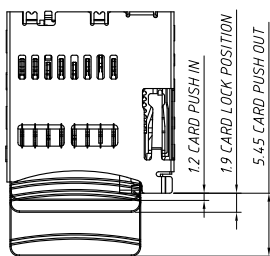
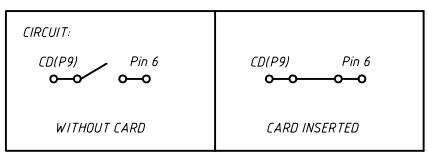
1 2 3 4 5 6 7 8

A  
B  
C  
D  
E  
F  
G  
H

A  
B  
C  
D  
E  
F  
G  
H

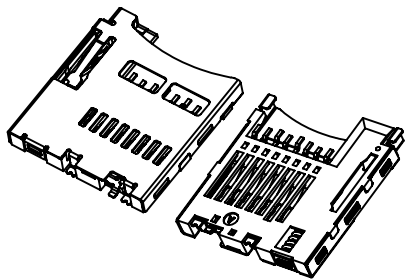


RECOMMENDED PCB LAYOUT  
GENERAL TOLERANCE ±0.05



PIN NO.	MICRO SD	
Pin 1	DAT2	1P
Pin 2	CD/DAT3	2P
Pin 3	CMD	3P
Pin 4	VDD	4P
Pin 5	CLK	5P
Pin 6	VSS	6P
Pin 7	DAT0	7P
Pin 8	DAT1	8P
Pin 9	CARD EDTECT	

**Electrical:**  
 Contact current rating:0.5A Max.  
 Contact resistance:100mΩ Max.  
 Insulation Resistance:250V DC or 300V AC for no less than 1 minute  
 Mating durability:10000 Cycles Min.  
 Insertion force:2.0kgf max.  
 Extraction force:0.5kgf min.  
 Operating Temperature range:-25°C TO +85°C



GENERAL TOLERANCE	ANGLE TOLERANCE	PROJECTION	Description:
X. ±0.15	X. ±5°	UNITS	Micro SD Card CONN;PUSH/ PUSH,H1.85mm,SMD Normally open L-KLS1-SD107
.X ±0.03	.X ±3°	SHEET SIZE	
.XX ±0.05	.XX ±2°	KLS P/N:	
Draw by: Jenny	Date: 2018-03-10		NingBo KLS ELECTRONIC CO.,L TD.
Check by:	Date: 2018-03-10		
SCALE	SHEET 1 OF 1		

1 2 3 4 5 6 7 8