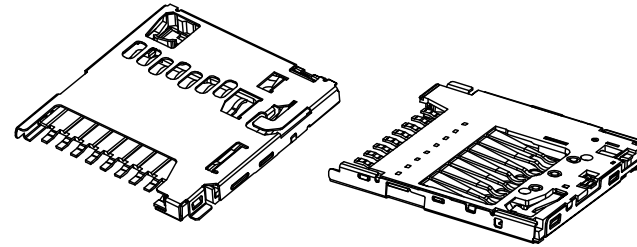
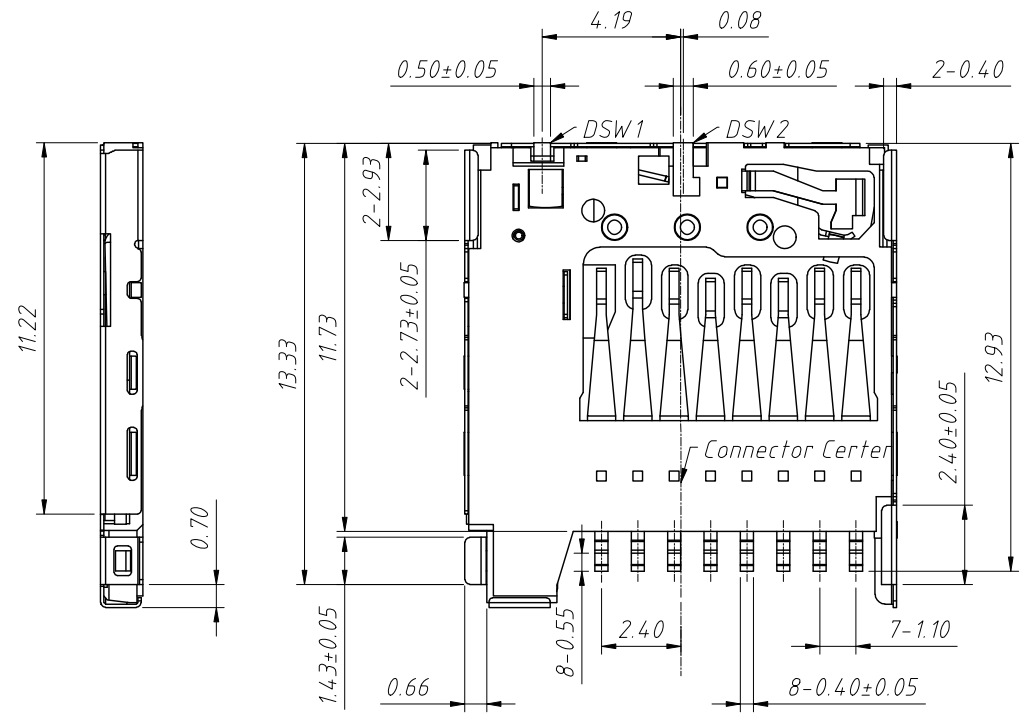
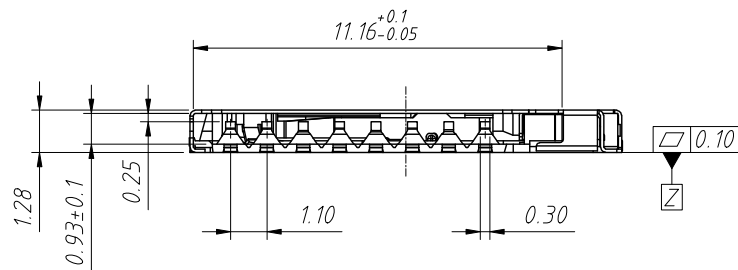
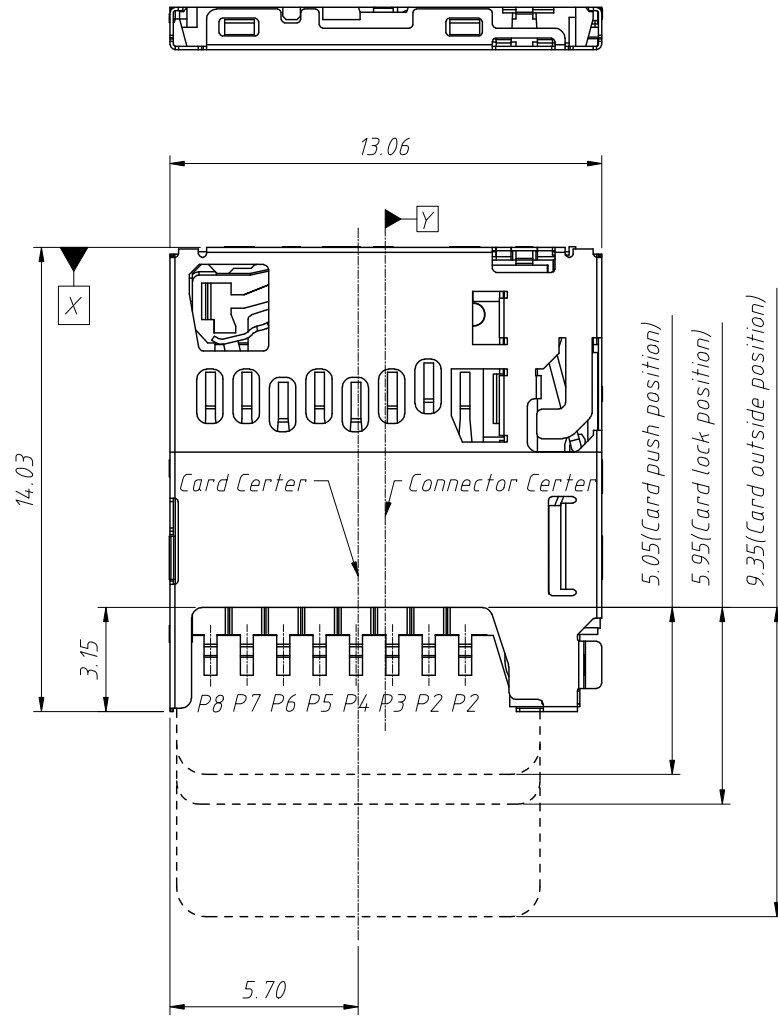


RoHS Compliance



Order Information:

L-KLS1-SD113-H1.28-R

L: RoHS

Micro SD card

Height 1.28mm

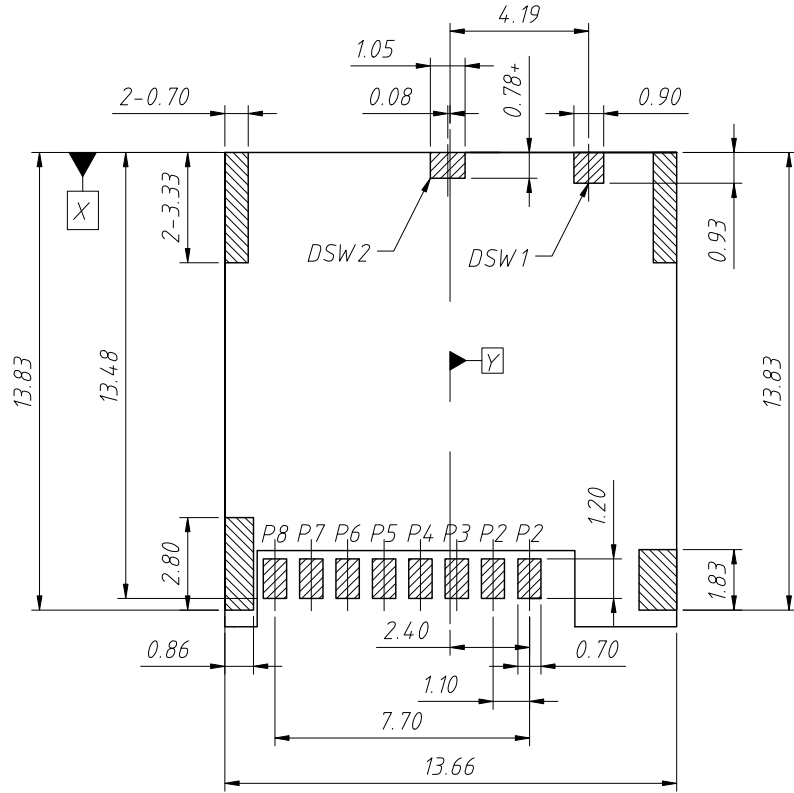
Pack:R-Roll Pack

ANGLE TOLERANCE	PROJECTION	Description:
±3°		Micro SD Card Connector Push Pull, H1.28, With CD Pin
GENERAL TOLERANCE	UNITS	mm
0-6 ±0.10	SHEET SIZE	A4
6-30 ±0.20	Draw:	Daniel
30-120 ±0.30	Check:	Daniel
		KLS P/N:
		L-KLS1-SD113-H1.28-R
		2023-03-06
		2023-03-06



NingBo KLS ELECTRONIC CO.,LTD.

1 RoHS Compliance



Recommend PCB Layout
Tolerance: ±0.05

PIN No.	Pin Assignment
PIN1	DAT2
PIN2	CD/DAT3
PIN3	CMD
PIN4	VDD
PIN5	CLK
PIN6	VSS
PIN7	DAT0
PIN8	DAT1

 Pad Area
 Keep Out Area
 Gnd Pattern Onte

Materials:

Insulator: High Temperature Thermoplastic

LCP SZ6505HF Black, UL 94V-0

Terminal: Phosphor Bronze (C5210-H, T=0.15mm)

Shell: SUS301-3/4, T=0.10mm

Spring: SUS301 L=9.80mm

Slider: PPA Black

Drawbar: SUS304-H, L=3.85mm

Plating:

Terminal: Plated 80u" min Ni Overall

Plated 1u" min Au Selective Contact area

Selective 1u" min Au Over Ni on solder area

Shell: Plated 1u" min Au overall 50u" min Ni

Specification:

1. Current Rating: 0.5A AC/DC Max

2. Voltage Rating: 12V AC/DC

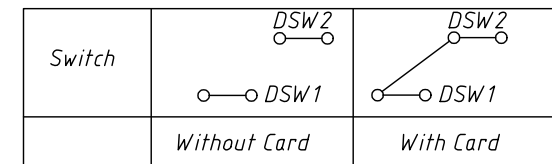
3. Insulation Resistance: 1000MΩ Min. At 500V DC



4. Contact Resistance: 100mΩ Max

5. Ambient Humidity Range: 95% R.H. Max

6. Ambient Temperature Range: -20°C To +60°C

7. Durability: 5000 Cycles



ANGLE TOLERANCE	PROJECTION	Description:	
±3°			Micro SD Card Connector Push Pull, H1.28, With CD Pin
GENERAL TOLERANCE	UNITS	mm	KLS P/N:
0-6	±0.10	SHEET SIZE	A4
6-30	±0.20	Draw:	Daniel 2023-03-06
30-120	±0.30	Check:	Daniel 2023-03-06
			L-KLS1-SD113-H1.28-R
			 NingBo KLS ELECTRONIC CO., L.TD.