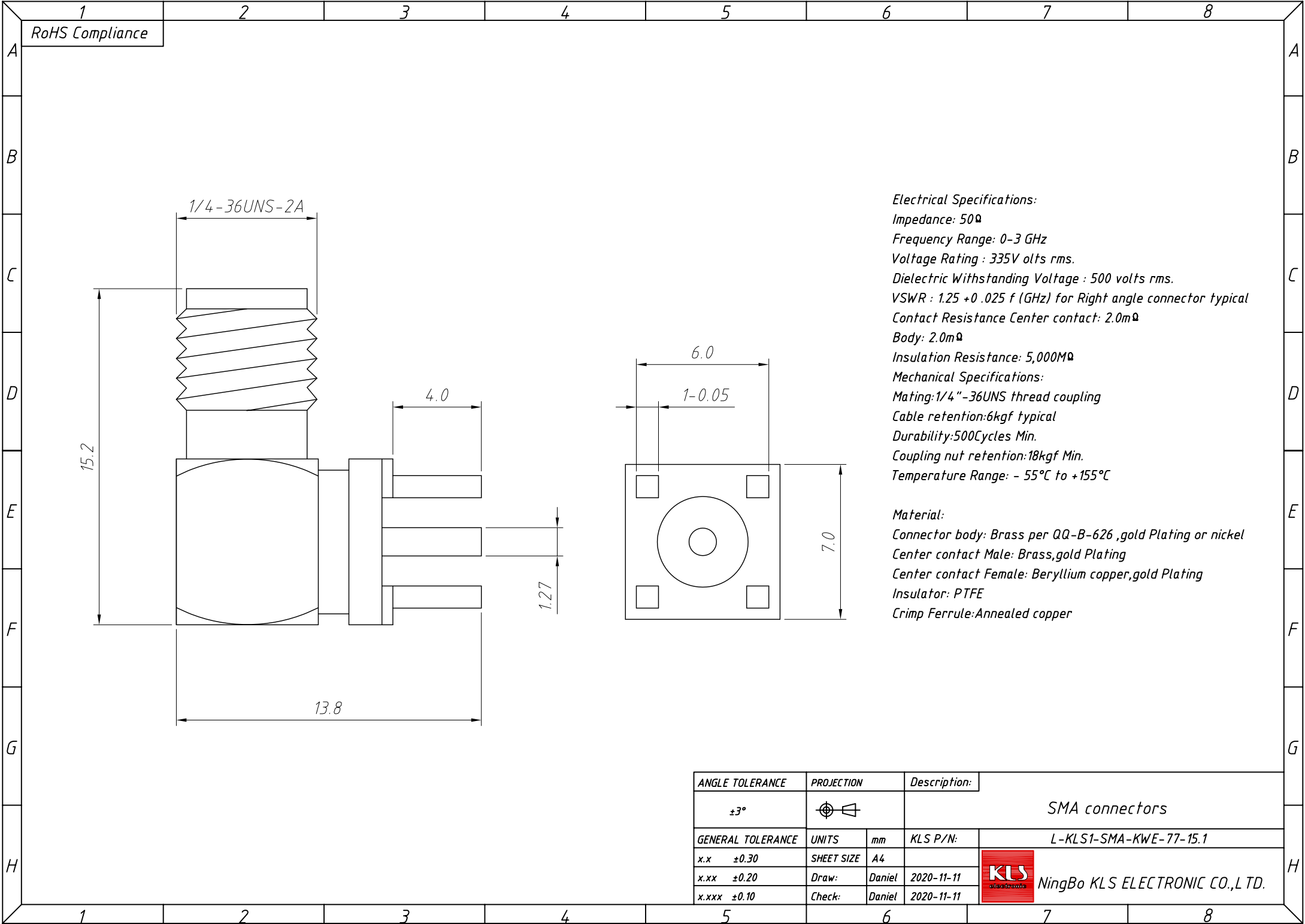


**Material:**  
 Connector body: Environmental brass  
 Connector housing: Gold Plated  
 Inner Conductor: Gold plating

**Electrical Specifications:**  
 Impedance: 50Ω  
 Insulation Resistance: 5,000MΩ  
 Voltage Rating: 335V  
 Dielectric Withstanding Voltage: 1000V rms  
 Frequency Range: 0-3 GHz, VSWR 1.3 Max  
 Durability: 500 Cycles Min  
 Temperature Range: -55°C to +165°C

<b>GENERAL TOLERANCE</b>	<b>PROJECTION</b>		<b>Description:</b>
.X ±0.50	UNITS	mm	PCB Mount SMA Connector Right Angle Jack Male KLS P/N: L-KLS1-SMA002A-B
.X ±0.25	SCALE	1:1	
.XX ±0.10	Draw by:	Jenny	
<b>ANGLE TOLERANCE</b>	Check by:		 NingBo KLS ELECTRONIC CO.,L TD.
.X ±5°	Date	2018-03-01	
.X ±3°	SHEET	1 OF 1	
.XX ±2°			

1  
RoHS Compliance



**Electrical Specifications:**  
 Impedance: 50Ω  
 Frequency Range: 0-3 GHz  
 Voltage Rating : 335V olts rms.  
 Dielectric Withstanding Voltage : 500 volts rms.  
 VSWR : 1.25 +0 .025 f (GHz) for Right angle connector typical  
 Contact Resistance Center contact: 2.0mΩ  
 Body: 2.0mΩ  
 Insulation Resistance: 5,000MΩ  
**Mechanical Specifications:**  
 Mating: 1/4"-36UNS thread coupling  
 Cable retention: 6kgf typical  
 Durability: 500Cycles Min.  
 Coupling nut retention: 18kgf Min.  
 Temperature Range: - 55°C to +155°C

**Material:**  
 Connector body: Brass per QQ-B-626 ,gold Plating or nickel  
 Center contact Male: Brass, gold Plating  
 Center contact Female: Beryllium copper, gold Plating  
 Insulator: PTFE  
 Crimp Ferrule: Annealed copper

ANGLE TOLERANCE	PROJECTION	Description:		
±3°			SMA connectors	
GENERAL TOLERANCE	UNITS	mm	KLS P/N:	L-KLS1-SMA-KWE-77-15.1
x.x ±0.30	SHEET SIZE	A4		
x.xx ±0.20	Draw:	Daniel	2020-11-11	
x.xxx ±0.10	Check:	Daniel	2020-11-11	

**NingBo KLS ELECTRONIC CO.,L TD.**