

PD14 PROGRAMMER FOR LUMEL S.A. PRODUCTS

FEATURES:



INPUTS:

USB

OUTPUTS:

RJ-11

GALVANIC ISOLATION:

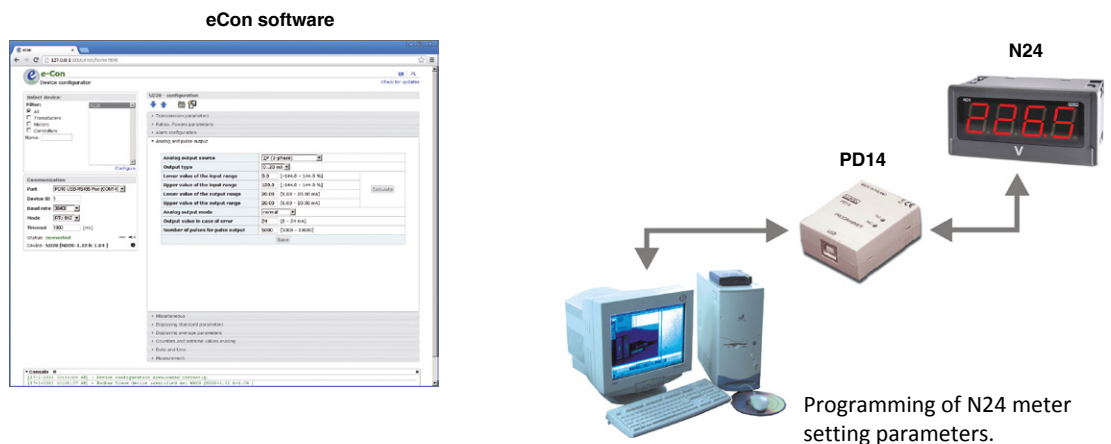
USB

RJ-11



- Destined to program parameters in LUMEL S.A. products.
- Enables the connection of LUMEL S.A. products to a PC computer through the USB interface.
- The device programming is carried out using free PD11 and eCon software.
- PD11 and eCon programs enable:
 - change of device parameters,
 - storage and readout set up parameters to the file,
 - configuration of any device with the MODBUS protocol (eCon).

EXAMPLE OF APPLICATION



TECHNICAL DATA

Baud rate	9600 bps
Information unit	8N1 (8 data bits without the even parity bit, 1 stop bit)
Overall dimensions	43 x 51 x 20 mm
Wire length	1.5 m

RATED OPERATING CONDITIONS

Supply voltage	Collected from the device and the USB port	
Temperature	ambient: 0...23...50°C	storage: 0...70°C
Relative air humidity	< 95%	inadmissible condensation
Housing protection grade	IP20	
Operating position	any	
Galvanic isolation	1000 V	

Export department:
Tel.: +48 68 45 75 139/
276/ 386
Fax: +48 68 32 54 091
e-mail: export@lumel.com.pl

LUMEL S.A.
ul. Sulechowska 1
65-022 Zielona Góra
POLAND
WWW.LUMEL.COM.PL

PD14 enables the programming of:
- P11 and P12 transducers (PD11 program)
- digital meters, network parameter meters, transducers, controllers and others (eCon).

PD11 and eCon software are available on our website:
www.lumel.com.pl

ORDER EXAMPLE

The code **PD14 - 8** means a programmer without extra requirements.

ORDERING CODE

	PD14 -	X
Acceptance tests:		
without extra requirements		8
with an extra quality inspection certificate		7
acc. to customer's request*		X

* after agreeing with the manufacturer