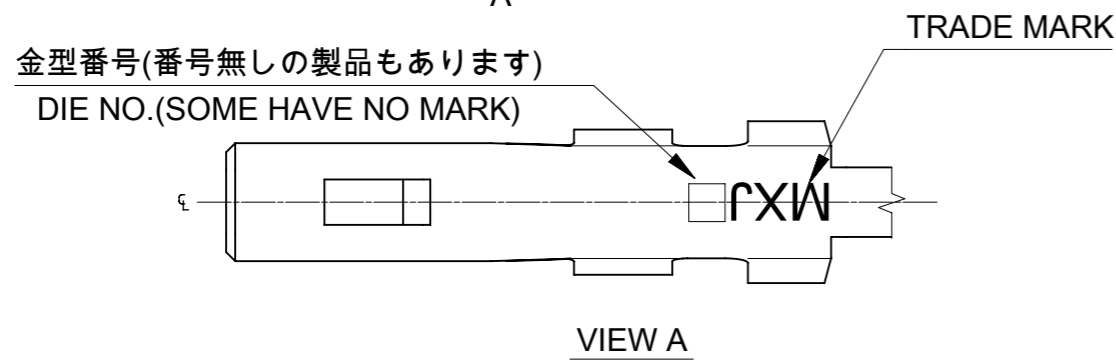


NOTES:

- 材料及び仕上げ(めっき仕様): 表参照
MATERIAL AND PLATING: SEE TABLE
- △ 適応ハウジング, 嵌合相手, 関連ドキュメントについては SHEET 2 を御参照下さい。
PLEASE REFER TO SHEET 2 FOR APPLICABLE HOUSING, MATING PARTNER AND RELATED DOCUMENTS.
- 本製品は錫めっき品である。
金めっき品は 5011930000-SD/PSD/000 を御参照下さい。
THIS PRODUCT IS A TIN PLATING.
PLEASE REFER TO 5011930000-SD/PSD/000 FOR GOLD PLATING.



Φ0.4-0.8mm	AWG#28-32	ポリ袋 POLY BAG	バラ状 LOOSE	501334 0100
		リール REEL	連鎖状 CHAIN	501334 0000
絶縁被覆外径範囲 INS. RANGE	適用電線範囲 WIRE RANGE	梱包形態 PACKAGING	端子形状 FORM	発注番号 ORDER No.

THIS DRAWING CONTAINS INFORMATION THAT IS PROPRIETARY TO MOLEX ELECTRONIC TECHNOLOGIES, LLC AND SHOULD NOT BE USED WITHOUT WRITTEN PERMISSION		CURRENT REV DESC:		molex		
DIMENSION UNITS mm	SCALE 20:1	EC NO: 639499				
GENERAL TOLERANCES (UNLESS SPECIFIED)		DRWN: AISHIKAWA		2020/06/15		
ANGULAR TOL ± 3.0°		CHK'D: AIDA		2020/06/19		
4 PLACES ± 0.2		APPR: SAKIYAMA		2020/06/19		
3 PLACES ± 0.2		INITIAL REVISION:		DOCUMENT NUMBER		
2 PLACES ± 0.2		DRWN: KYAMADA02		5013340000-SD		DOC TYPE
1 PLACE ± 0.2		APPR: TKANEKO		PSD		DOC PART
0 PLACES ± 0.2		2017/10/05		000		REVISION
DRAFT WHERE APPLICABLE MUST REMAIN WITHIN DIMENSIONS		THIRD ANGLE PROJECTION	DRAWING	SERIES	MATERIAL NUMBER	CUSTOMER
		⊕ ⊖	A3-SIZE	501334		
						SHEET NUMBER
						1 OF 2

部品 PART	材質 MATERIAL
ターミナル TERMINAL	りん青銅 PHOSPHOR BRONZE
接点部 CONTACT	錫めっき : 1.0 MICROMETER MIN. リフロー処理(前めっき) MATTE TIN REFLOW TREATMENT(PRE-PLATING)

DOCUMENT STATUS	P1	RELEASE DATE	2020/06/19	11:24:38
-----------------	----	--------------	------------	----------

△ 2 適応製品及び各種仕様書

APPLICABLE PRODUCTS AND VARIOUS SPECIFICATIONS

○標準仕様 STANDARD TYPE

列 ROW	SINGLE			
適応ハウジング APPLY HOUSING	INNER LOCK		OUTER LOCK	
シリーズ番号 SERIES No.	501330		501939	
適応嵌合相手 MATE WITH	SMT			
	TIN PLATING			
	VERTICAL	RIGHT ANGLE	VERTICAL	RIGHT ANGLE
シリーズ番号 SERIES No.	501331	501568	501940	501953
製品仕様書 PRODUCT SPECIFICATION	5013300000-PS 001		PS-501940-001	
取扱説明書 APPLICATION SPECIFICATION	5013300000-AS 000			

○ローハロゲン仕様 LOW HALOGEN TYPE

列 ROW	SINGLE			
適応ハウジング APPLY HOUSING	INNER LOCK		OUTER LOCK	
シリーズ番号 SERIES No.	501330		501939	
適応嵌合相手 MATE WITH	SMT			
	TIN PLATING			
	VERTICAL	RIGHT ANGLE	VERTICAL	RIGHT ANGLE
シリーズ番号 SERIES No.	208381 ***9	208387 ***9	208383 ***9	208385 ***9
製品仕様書 PRODUCT SPECIFICATION	5013300000-PS 003		5019390000-PS 002	
取扱説明書 APPLICATION SPECIFICATION	5013300000-AS 001			

※製品嵌合図は各"適応嵌合相手"図面参照のこと

MATING VIEW:REFER TO EACH "MATE WITH" PART DRAWING.

梱包仕様書 PACKING SPECIFICATION	SPECIFICATION NUMBER SPK-501334-001
--------------------------------	--

THIS DRAWING CONTAINS INFORMATION THAT IS PROPRIETARY TO MOLEX ELECTRONIC TECHNOLOGIES, LLC AND SHOULD NOT BE USED WITHOUT WRITTEN PERMISSION		CURRENT REV DESC:		molex	
DIMENSION UNITS mm	SCALE 1:1	EC NO: 639499			
GENERAL TOLERANCES (UNLESS SPECIFIED)		DRWN: AISHIKAWA		2020/06/15	
ANGULAR TOL ± 3.0°		CHK'D: AIDA		2020/06/19	
4 PLACES ± 0.2	APPR: SAKIYAMA		2020/06/19		PRODUCT CUSTOMER DRAWING
3 PLACES ± 0.2	INITIAL REVISION:		DOCUMENT NUMBER		
2 PLACES ± 0.2	DRWN: KYAMADA02		2017/10/05		5013340000-SD
1 PLACE ± 0.2	APPR: TKANEKO		2018/06/21		
0 PLACES ± 0.2	DRAFT WHERE APPLICABLE MUST REMAIN WITHIN DIMENSIONS		THIRD ANGLE PROJECTION	DRAWING A3-SIZE	SERIES 501334
		MATERIAL NUMBER		CUSTOMER	SHEET NUMBER 2 OF 2

DOC TYPE DOC PART REVISION
PSD 000 E

2020/06/19