

GQ12-A series

the installation aperture is $\Phi 12\text{mm}$;

- ☆ the switch is "self recovery | slow action | single pole single throw";
- ☆ the products have complete types of lamps (single point, ring and power symbols);
- ☆ the product has two kinds of heads: low flat and high flat, which can be selected by users;
- ☆ the waterproof grade of the product is IP65 / IP67.



GQ12-A series model description

GQ12 - A - *0* / *1* / *2*

| Symbol | Symbol name | Specify |
|--------|-------------------|---|
| ★ | Head shape | F: Flat round / H: High round |
| | Contact Structure | 10: 1NO / No digital means indicator |
| ◇ | Illuminated Type | D: Dot illuminated / E: Ring illuminated / DT: Ring+power symbol illuminated / No letters mean no lights |
| ◆ | Wiring type | J: Wiring patch |
| | Color | R: Red / G: Green / Y: Yellow / B: Blue / W: White |
| | Voltage | 6V / 12V / 24V All have built-in resistors, other voltage levels can be customized, and external resistors are required |
| | Housing Material | C: Brass chrome plating / S: Stainless steel / A: Zinc aluminum alloy (Black) |

Note: Please read the catalog carefully, and choose the right part-number according to the sign.

Performance Characteristic

| | |
|---------------------------|--|
| Operating Temp | -25°C~+55°C (Non freezing) Keep the switch air circulating well |
| Operating Humidity | 45~85% RH(Non condensing) |
| Contact Resistance | ≤50mΩ |
| Insulation Resistance | ≥100MΩ (500VDC) |
| Max. withstanding voltage | 1500VAC, 50Hz, 1min |
| Vibration resistance | 50Hz, The amplitude is about 1.2mm |
| Solder heat resistance | 320°C 3s |
| Switch rating | 2A/36VDC |
| Mechanical Life | 500,000 cycles |
| Electrical Life | 200,000 cycles |
| Base material | PA |
| Nut torque | About 0.3Nm |
| Torque | About 1.5N |
| Operation Travel | About 1.5mm |
| Protection class | IP65(IP67 can be customized), IK07 |

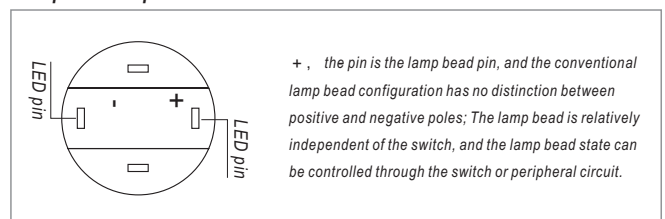
Switch structure description

| Type | Diagram | Symbol |
|------|---------|--------|
| X | | |

LED Specifications

| LED life | Current | Allowable voltage fluctuation range | Circuit diagram |
|--------------|-----------------|-------------------------------------|---|
| ≥40000 hours | ≤24V about 15mA | DC: ±10% | <small>The product has built-in protective resistance, and the lamp bead wiring has no distinction between positive and negative poles.</small> |

LED pin description



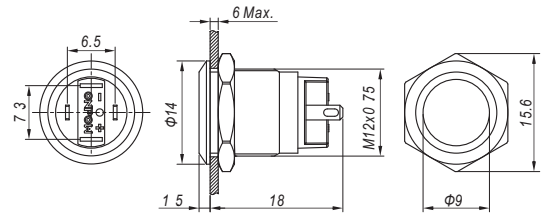
Standards and certification

| Corresponding standard | Certification mark | Certification authority / certification number |
|------------------------|--------------------|--|
| EN61058-1:2018 | | UDEM/M.2021.206.C62197 |



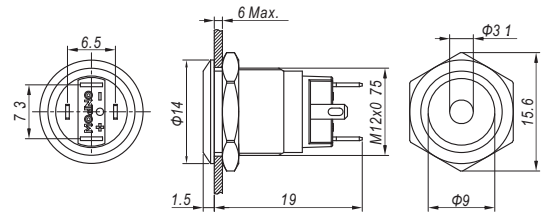
GQ12-AF-10/JI

Contact Structure 1NO
Operation type Momentary
Housing Material C: Brass chrome plating / S: Stainless steel / A: Zinc aluminum alloy (Black)
Wiring type Wiring patch(2x0 5mm)
Protection class IP65(IP67 can be customized), IK07
Applicable accessories M12-12F



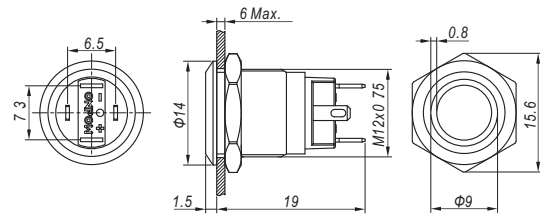
GQ12-AF-10D/JI

Contact Structure 1NO
Operation type Momentary
LED color R G Y B W
Voltage 6V/12V/24V
Housing Material C: Brass chrome plating / S: Stainless steel
Wiring type Wiring patch(2x0 5mm)
Protection class IP65(IP67 can be customized), IK07
Applicable accessories M12-12F



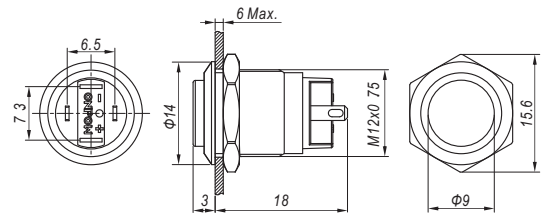
GQ12-AF-10E/JI

Contact Structure 1NO
Operation type Momentary
LED color R G Y B W
Voltage 6V/12V/24V
Housing Material C: Brass chrome plating / S: Stainless steel / A: Zinc aluminum alloy (Black)
Wiring type Wiring patch(2x0 5mm)
Protection class IP65(IP67 can be customized), IK07
Applicable accessories M12-12F



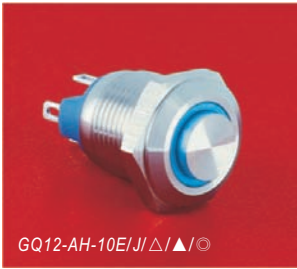
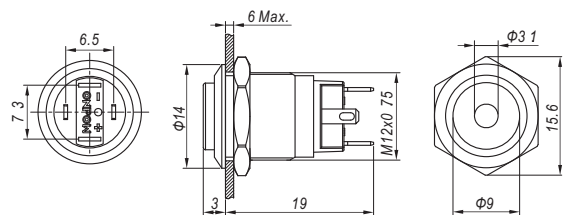
GQ12-AH-10/JI

Contact Structure 1NO
Operation type Momentary
Housing Material C: Brass chrome plating / S: Stainless steel
Wiring type Wiring patch(2x0 5mm)
Protection class IP65(IP67 can be customized), IK07
Applicable accessories M12-12H



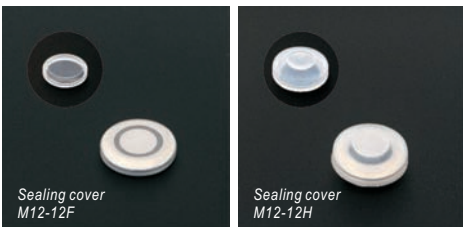
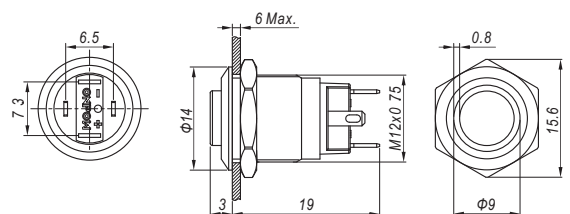
GQ12-AH-10D/JI

Contact Structure 1NO
Operation type Momentary
LED color R G Y B W
Voltage 6V/12V/24V
Housing Material C: Brass chrome plating / S: Stainless steel
Wiring type Wiring patch(2x0 5mm)
Protection class IP65(IP67 can be customized), IK07
Applicable accessories M12-12H



GQ12-AH-10E/JI

Contact Structure 1NO
Operation type Momentary
LED color R G Y B W
Voltage 6V/12V/24V
Housing Material C: Brass chrome plating / S: Stainless steel
Wiring type Wiring patch(2x0 5mm)
Protection class IP65(IP67 can be customized), IK07
Applicable accessories M12-12H



Sealing cover M12-12F

Sealing cover M12-12H



Contact Structure 1NO
 Operation type Momentary
 LED color △ R G Y B W
 Voltage 6V/12V/24V
 Housing Material Stainless steel
 Wiring type Wiring patch(2x0.5mm)
 Protection class IP65(IP67 can be customized), IK07
 Applicable accessories M12-12F

