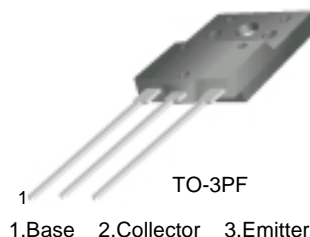
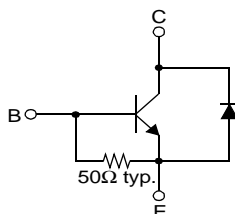


KSC5386

High Voltage Color Display Horizontal Deflection Output (Damper Diode Built In)

Equivalent Circuit

- High Collector-Base Breakdown Voltage : $BV_{CBO}=1500V$
- High Speed Switching : $t_F=0.1\mu s$ (Typ)
- Wide S.O.A
- For C-Monitor (48KHz)



NPN Triple Diffused Planar Silicon Transistor

Absolute Maximum Ratings $T_C=25^\circ C$ unless otherwise noted

Symbol	Parameter	Value	Units
V_{CBO}	Collector-Base Voltage	1500	V
V_{CEO}	Collector-Emitter Voltage	800	V
V_{EBO}	Emitter-Base Voltage	6	V
I_C	Collector Current (DC)	7	A
I_{CP}	Collector Current (Pulse)	16	A
P_C	Collector Dissipation ($T_C=25^\circ C$)	50	W
T_J	Junction Temperature	150	$^\circ C$
T_{STG}	Storage Temperature	-55 ~ 150	$^\circ C$

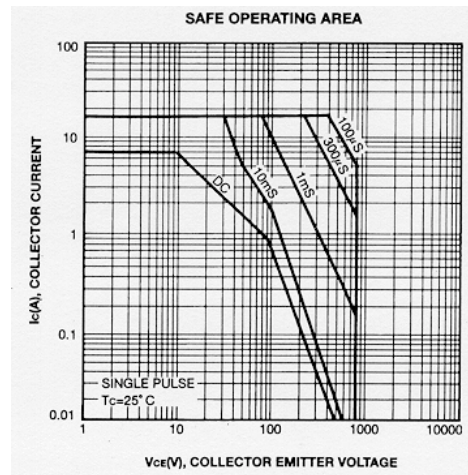
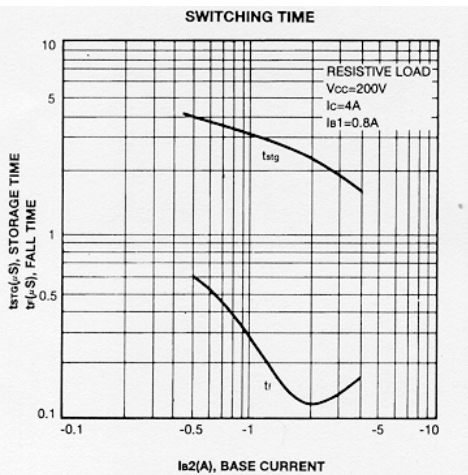
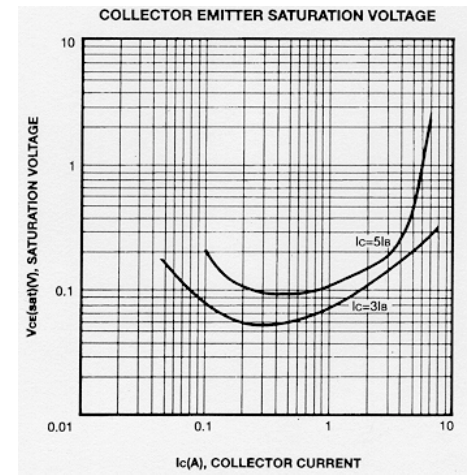
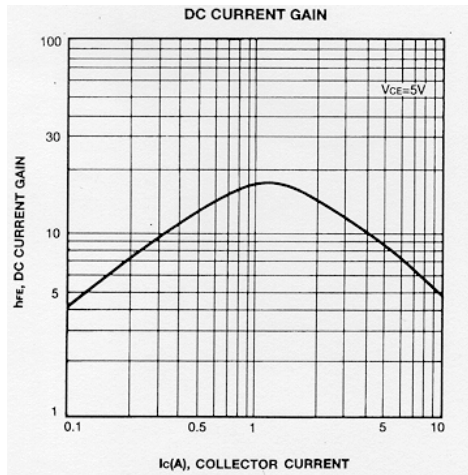
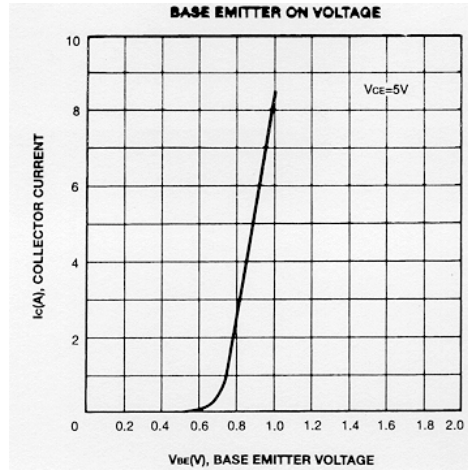
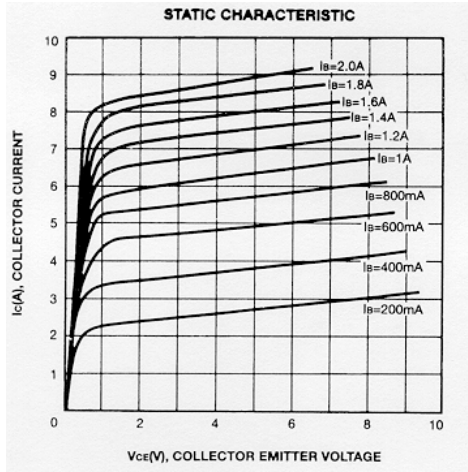
Electrical Characteristics $T_C=25^\circ C$ unless otherwise noted

Symbol	Parameter	Test Condition	Min.	Typ.	Max.	Units
I_{CES}	Collector Cut-off Current	$V_{CE} = 1400V, R_{BE} = 0$			1	mA
I_{CBO}	Collector Cut-off Current	$V_{CB} = 800V, I_E = 0$			10	μA
I_{EBO}	Emitter Cut-off Current	$V_{EB} = 4V, I_C = 0$	40		250	mA
h_{FE}	DC Current Gain	$V_{CE} = 5V, I_C = 1.0A$	8		22	
$V_{CE(sat)}$	Collector-Emitter Saturation Voltage	$I_C = 5A, I_B = 1.2A$			4.2	V
$V_{BE(sat)}$	Base-Emitter Saturation Voltage	$I_C = 5A, I_B = 1.2A$			1.5	V
V_F	Damper Diode Turn On Voltage	$I_F = 6A$			2	V
t_F	Fall Time	$V_{CC} = 200V, I_C = 4A, I_{B1} = 0.8A, I_{B2} = -1.6A, R_L = 50\Omega$			0.2	μs

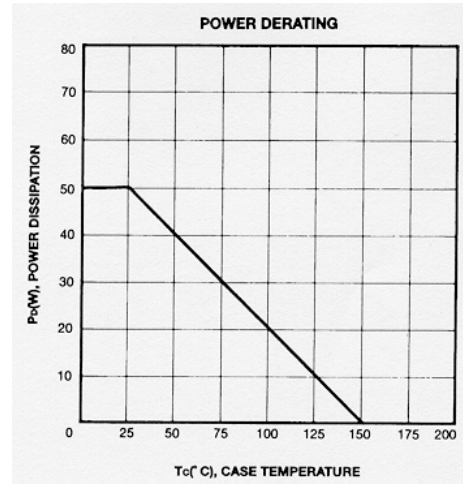
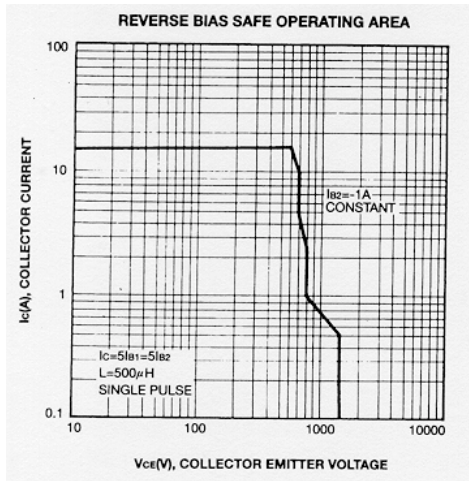
Thermal Characteristics $T_C=25^\circ C$ unless otherwise noted

Symbol	Item	Max	Unit
$R_{\theta jc}$	Thermal Resistance, Junction to Case	2.37	$^\circ C/W$

Typical Characteristics



Typical Characteristics (continued)



KSC5386

Package Dimensions

KSC5386

TO-3PF

