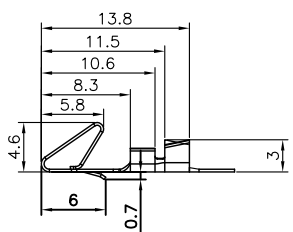


REV.	DESCRIPTION	DRAWN	CHECKED	APPROVED
A	NEW RELEASE	LL 10/09/06	~	LJC 10/09/06
B	增加pin数方向	LL 12/21/06	~	LJC 12/21/06
C	ADD P/N CODE	JLZ 01/30/15'	HZW 01/30/15'	LJC 01/30/15'
D	DRAWING UPDATE	JLZ 05/04/18'	~	

Female Terminal



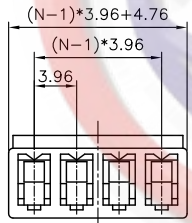
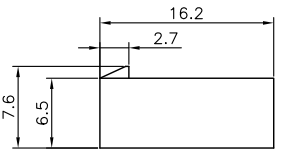
T-DS1072- S C 6 0 0

Contact Plating
6: Tin

Female Terminal

Wire Range	O.D of Wire	
Section Area (mm ²)	AWG#	mm
0.2~0.75	24~18	1.3~2.8

Female Housing



I-DS1072- S C T 0 X

No. of contact
02~13

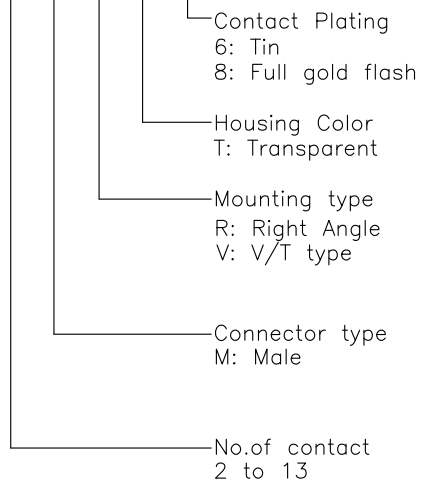
NOTES:

1. MAIN SPECIFICATIONS

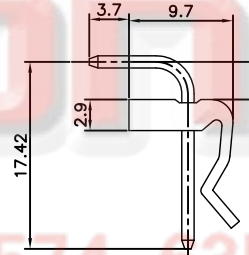
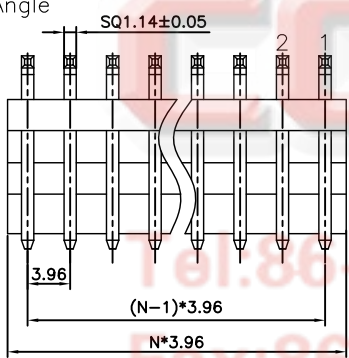
- . Housing material: NYLON 66
- . Wire range: AWG#24~#18
- . Rated voltage: 250V
- . Rated current: 7A(18AWG)
- . Contact resistance: ≤ 30mΩ
- . Insulation resistance: ≥ 1000MΩ
- . Withstanding voltage: 1000V,AC 1 minute
- . Temperature range: -25 ~ +85°C
- . Recommend PC board thickness:1.6mm

2. PRODUCT NUMBER CODE:

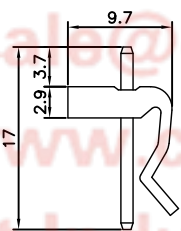
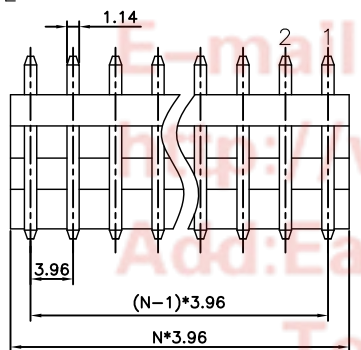
DS1072 - X X X X X



Male Right Angle



Male V/T TYPE



N=No. of contacts

GENERAL TOLERANCE		ANGLE TOLERANCE	
X.	±0.60	X.	±5°
.X	±0.38	.X	±3°
.XX	±0.25	.XX	±2°

PROJECTION	TITLE
UNITS: mm	P.C.B CONNECTOR Pitch 3.96mm
SHEET SIZE: A4	SERIES: DS1072 SERIES

DRAWING TYPE	CUSTOMER
SCALE: 1:1	SHEET: 1 OF 1
DRAWING NO.:	C-DS1072-XXXXX-D

晨翔电子有限公司
CONNFLY CONNFLY ELECTRONIC CO. LTD

Tel: 86-574-63508787
Fax: 86-574-63510817
E-mail: sales@connfly.com
Http://www.connfly.com
Add: East Industry Zone, Kameiye
Town, Cixi, Ningbo, China
P.C: 315333