

Industrial &amp; Electrical Components

## GENERAL PURPOSE RELAY

Series  
HHC68A

- Small size and light weight.
- Low coil power consumption.
- High contact load.
- Strong anti-shock high reliability.

### SPECIFICATIONS

#### Contact

Arrangement	1A/B/C、2A/B/C	3A/B/C、4A/B/C
Contact Material	Silver Alloy	
Contact Resistance (By voltage drop 6V 1A)	Max. 50mΩ	
Rating		
Resistive load (Cos.Φ=1)	15A 240VAC	10A 240VAC
	15A 24VDC	10A 24VDC
Inductive (Cos.Φ=0.75~0.8)	7A 240VAC	5A 240VAC
Max. Allowable Voltage	110VDC/240VAC	
Max. Allowable Current	15A	10A
Max. Allowable Power force	1700VA/360W	1100VA/240W
Referencial Min.Load	10VDC 10mA	
Expected life(min.ope)		
Mechanical(at 120 cpm)	1 × 10 <sup>6</sup>	
Electrical (at 20 cpm)	1 × 10 <sup>5</sup>	

#### Characteristics

Operate Time	Max.25 msec.	
Release Time	Max.25 msec.	
Operating humidity	45 to 85% RH	
Initial breakdown voltage		
Between coil & contact	1500VAC (50/60Hz)for 1 Min.	
Between open contacts	1000VAC (50/60Hz)for 1 Min.	
Insulation Resistance	Min.100MΩ (500 VDC)	
Ambient temperature	-40℃~+70℃	
Shock	Functional	Min.10G
Resistance	Destruction	Min.100G
Vibration	Functional	10 to 55 Hz at double Amplitude of 1.5mm
Resistance	Destruction	10 to 55 Hz at double Amplitude of 1.5mm
Unit weight	40g Max.	
<b>Coil</b>		
Nominal operating power	0.9W to 1.2VA	

### TYPICAL APPLICATION

1.Industrial Machines

2.Electrical Equipments

3.Air conditioner and Household appliance

### ORDERING INFORMATION

HHC68A - 2C - 12D - P

①                      ②                      ③                      ④

① Part No.

② Contact Arrangement:

A: Normally Open B:Normally Closed C: Change-over

③ Coil Voltage:

DC: 6, 12, 24, 48, 110V

AC: 6, 12, 24, 48, 110/120, 220/240VAC

④ Terminal Type: P- P.C.B. Terminal

T- Plug-in F- Plug-in with Flange Cover

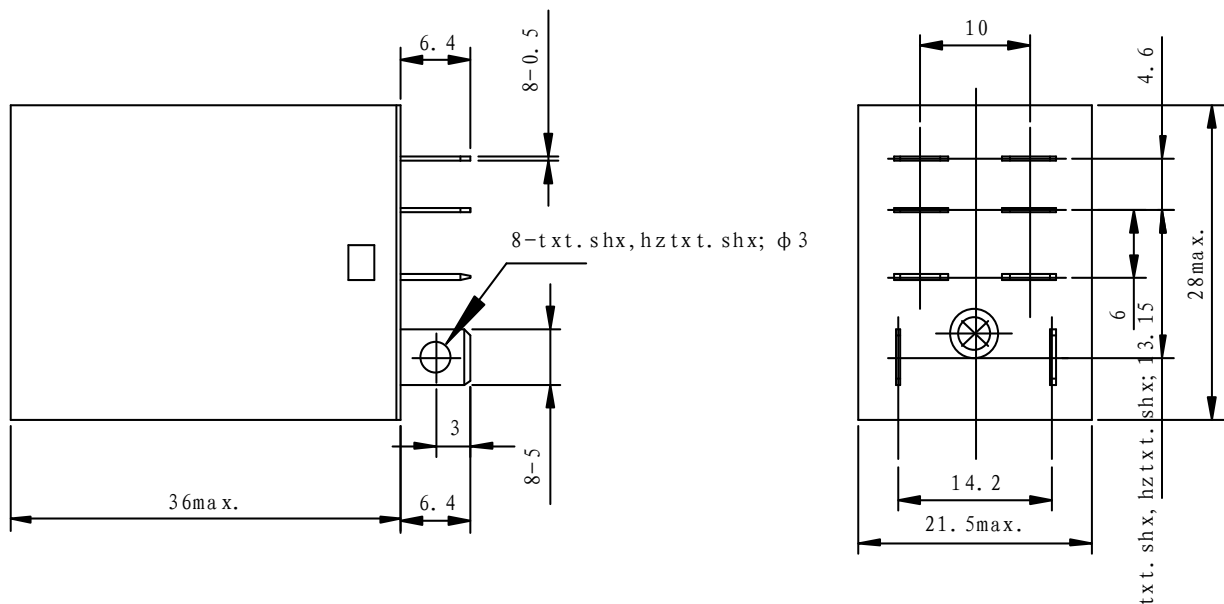
**COIL DATA (at 20°C)**

Type	Nominal Voltage	Nominal Current (mA)		Coil Resistance (Ω)±10%	Power Consumption	Pull-in Voltage	Drop-out Voltage	Max.Allowable Voltage
		50Hz	60Hz					
AC	6	220	170	10	abt. 1.0 to 1.3 VA (60Hz)	80% Max.	30% Min.	110%
	12	110	85	43				
	24	60	45	160				
	48	30	23	600				
	110	14	12	3400				
	120	13.5	11.5	3400				
DC	220/240	6	5	13600	abt. 0.9W	80% Max.	100% Min.	110%
	6	150	40					
	12	75	160					
	24	36.9	650					
	48	18.5	2600					
	110	10	11000					

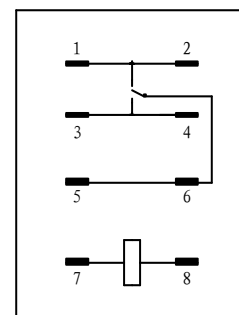
**DIMENSIONS**

Unit: mm

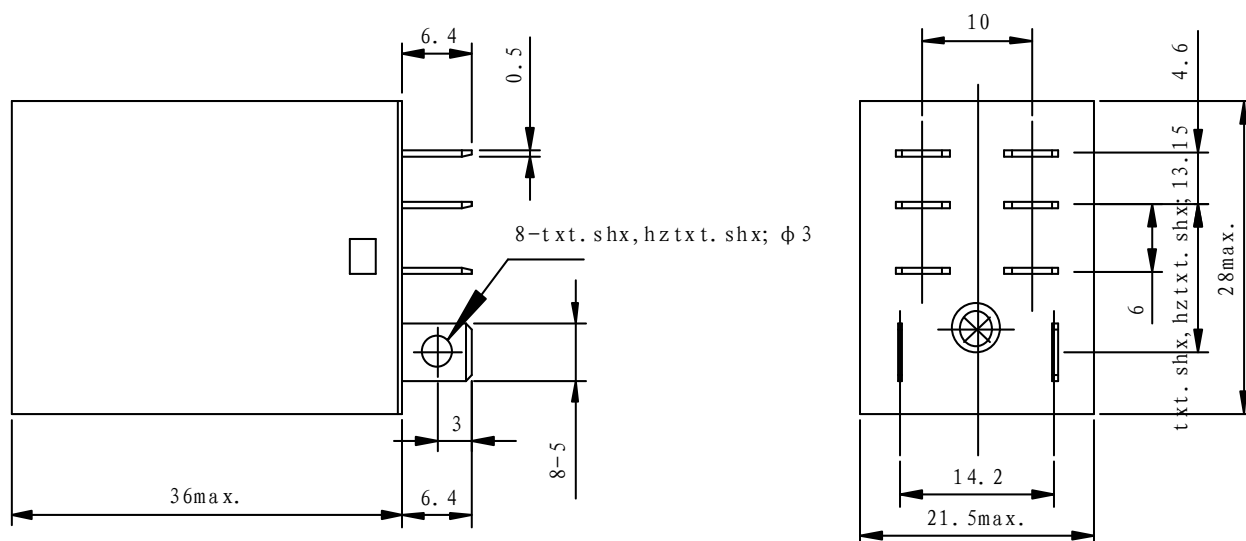
**HHC68A-1Pole Plug-in terminal**



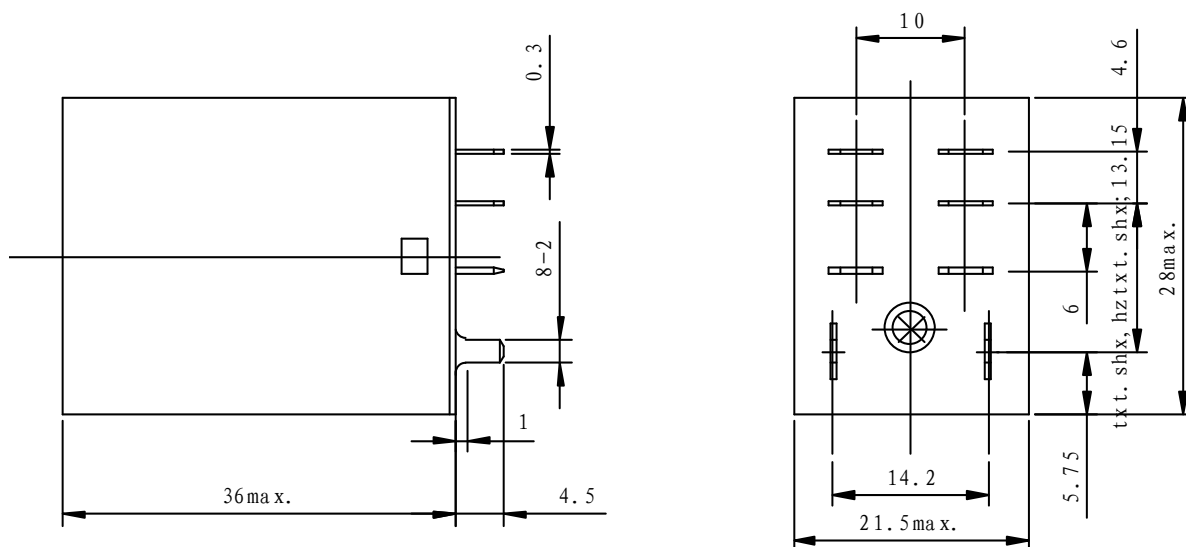
**WIRING DIAGRAM  
1 POLE**



## HHC68A-2Pole Plug-in terminal

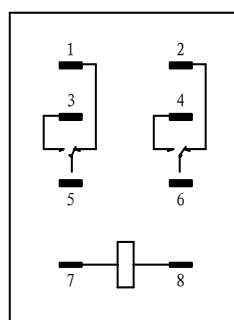


## NRG51-2Pole P.C.B terminal

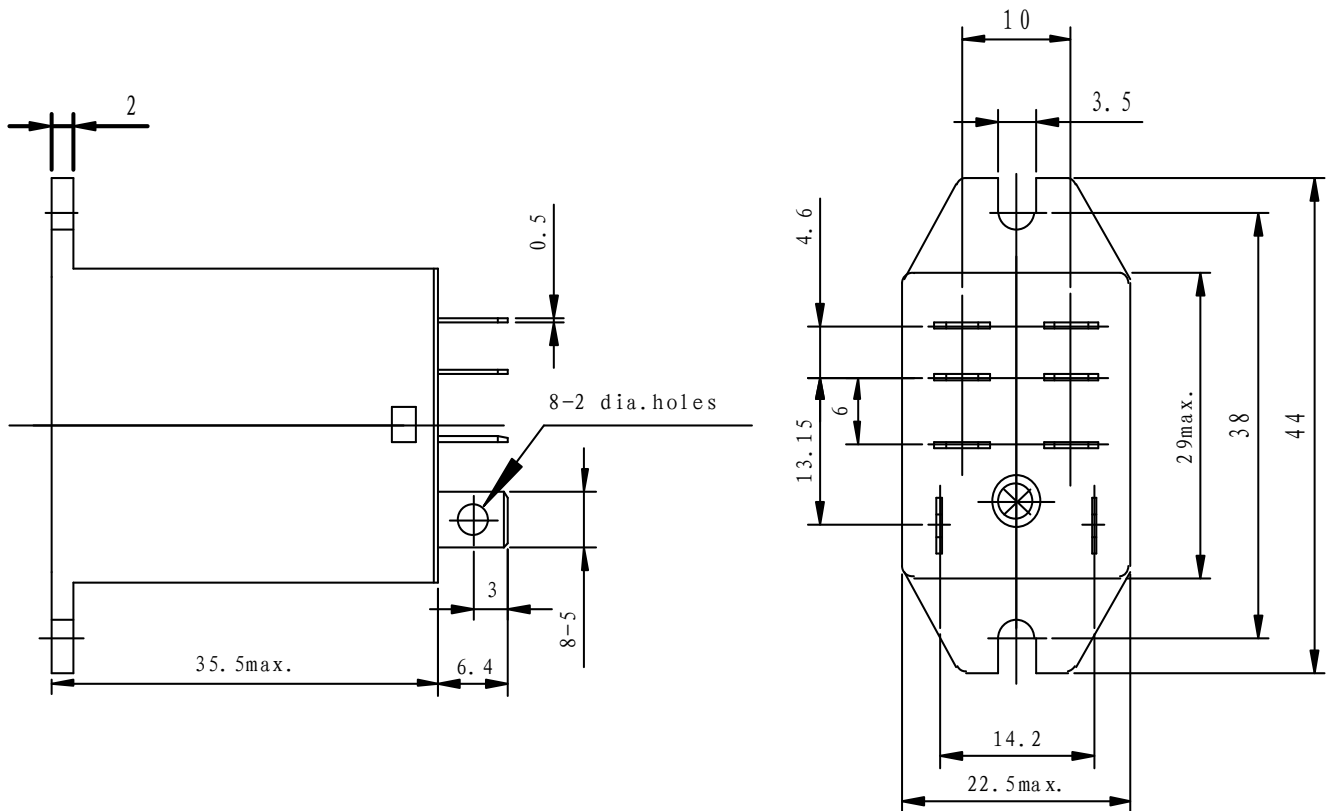


## WIRING DIAGRAM

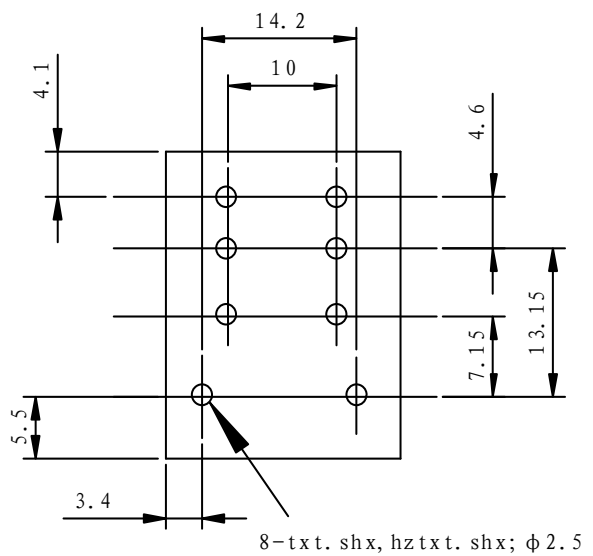
### 2 POLE



HHC68A-1Pole Flange Case and Plug-in Terminal  
HHC68A-2Pole Flange Case and Plug-in Terminal



Mounting Holes



1C, 2C

HHC68A-3Pole & 4 Pole drawings are available on request