



# 2SA2031 / 2SC5669

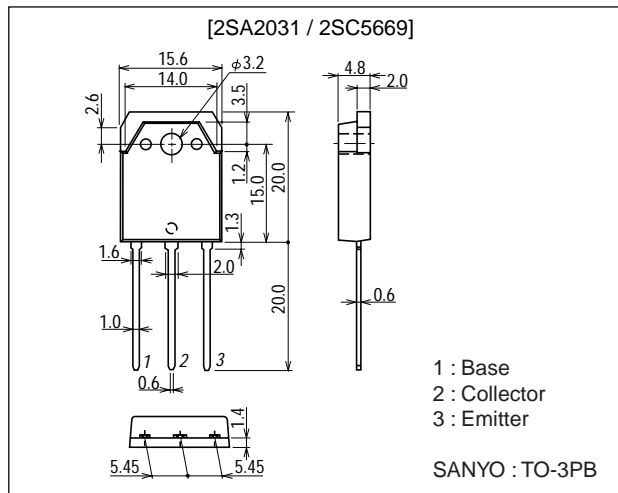
## 230V / 15A, AF100W Output Applications

### Features

- Large current capacitance.
- Wide ASO and high durability against breakdown.
- Adoption of MBIT process.

### Package Dimensions

unit : mm  
2022A



### Specifications

Note\*( ) : 2SA2031

### Absolute Maximum Ratings at Ta=25°C

Parameter	Symbol	Conditions	Ratings	Unit
Collector-to-Base Voltage	V <sub>CB0</sub>		(-)250	V
Collector-to-Emitter Voltage	V <sub>CEO</sub>		(-)230	V
Emitter-to-Base Voltage	V <sub>EB0</sub>		(-)6	V
Collector Current	I <sub>C</sub>		(-)15	A
Collector Current (Pulse)	I <sub>CP</sub>		(-)30	A
Collector Dissipation	P <sub>C</sub>		2.5	W
		T <sub>c</sub> =25°C	140	W
Junction Temperature	T <sub>J</sub>		150	°C
Storage Temperature	T <sub>stg</sub>		-55 to +150	°C

### Electrical Characteristics at Ta=25°C

Parameter	Symbol	Conditions	Ratings			Unit
			min	typ	max	
Collector Cutoff Current	I <sub>CB0</sub>	V <sub>CB</sub> =(-)250V, I <sub>E</sub> =0			(-)0.1	mA
Emitter Cutoff Current	I <sub>EB0</sub>	V <sub>EB</sub> =(-)4V, I <sub>C</sub> =0			(-)0.1	mA
DC Current Gain	h <sub>FE</sub> (1)	V <sub>CE</sub> =(-)5V, I <sub>C</sub> =(-)1A	60		160	
	h <sub>FE</sub> (2)	V <sub>CE</sub> =(-)5V, I <sub>C</sub> =(-)7.5A	35			

Continued on next page.

■ Any and all SANYO products described or contained herein do not have specifications that can handle applications that require extremely high levels of reliability, such as life-support systems, aircraft's control systems, or other applications whose failure can be reasonably expected to result in serious physical and/or material damage. Consult with your SANYO representative nearest you before using any SANYO products described or contained herein in such applications.

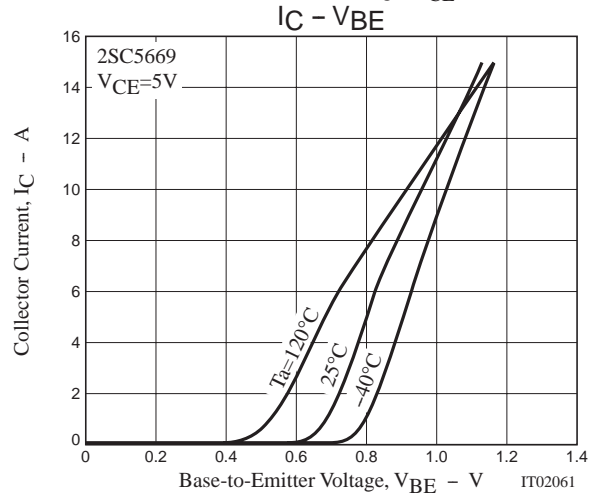
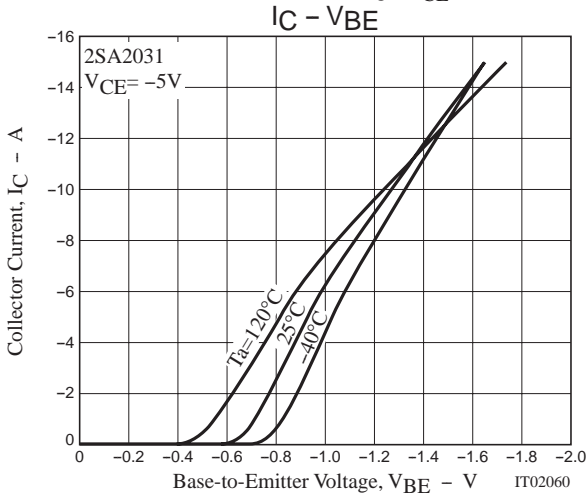
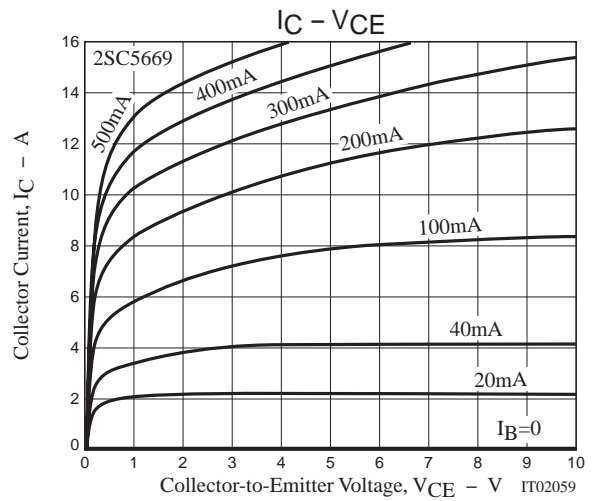
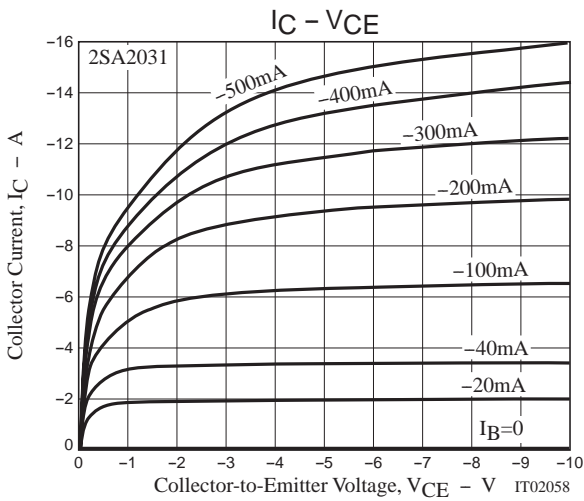
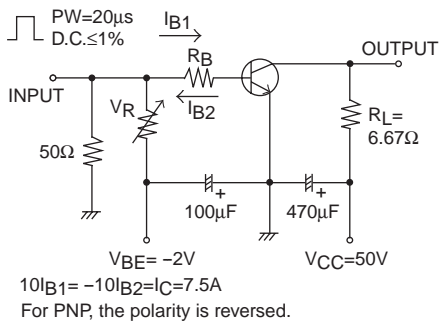
■ SANYO assumes no responsibility for equipment failures that result from using products at values that exceed, even momentarily, rated values (such as maximum ratings, operating condition ranges, or other parameters) listed in products specifications of any and all SANYO products described or contained herein.

# 2SA2031 / 2SC5669

Continued from preceding page.

Parameter	Symbol	Conditions	Ratings			Unit
			min	typ	max	
Gain-Bandwidth Product	$f_T$	$V_{CE}=(-)5V, I_C=(-)1A$		(10)15		MHz
Output Capacitance	$C_{ob}$	$V_{CB}=(-)10V, f=1MHz$		(400)200		pF
Base-to-Emitter Voltage	$V_{BE}$	$V_{CE}=(-)5V, I_C=(-)7.5A$			1.5	V
Collector-to-Emitter Saturation Voltage	$V_{CE(sat)}$	$I_C=(-)7.5A, I_B=(-)0.75A$		(-0.3)0.2	(-)-2.0	V
Collector-to-Base Breakdown Voltage	$V_{(BR)CBO}$	$I_C=(-)5mA, I_E=0$	(-)-250			V
Collector-to-Emitter Breakdown Voltage	$V_{(BR)CEO}$	$I_C=(-)50mA, R_{BE}=\infty$	(-)-230			V
Emitter-to-Base Breakdown Voltage	$V_{(BR)EBO}$	$I_E=(-)5mA, I_C=0$	(-)-6			V
Turn-On Time	$t_{on}$	See specified test circuit.		(0.45)0.56		$\mu s$
Storage Time	$t_{stg}$	See specified test circuit.		(1.75)3.3		$\mu s$
Fall Time	$t_f$	See specified test circuit.		(0.25)0.4		$\mu s$

## Switching Time Test Circuit



2SA2031 / 2SC5669

