



FR301 THRU FR307

3.0 AMPS. FAST RECOVERY RECTIFIERS

Voltage Range
50 to 1000 Volts
Current
3.0 Amperes

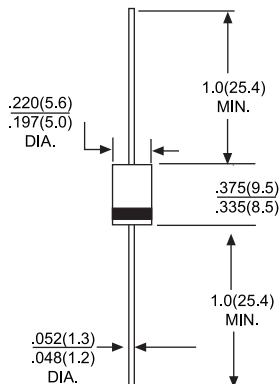
Features

- Low forward voltage drop
- High current capability
- High reliability
- High surge current capability

Mechanical Data

- Cases: Molded plastic
- Epoxy: UL 94V-0 rate flame retardant
- Lead: Axial leads, solderable per MIL-STD-202, Method 208 guaranteed
- Polarity: Color band denotes cathode end
- High temperature soldering guaranteed: 250°C/10 seconds/.375", (9.5mm) lead lengths at 5 lbs., (2.3kg) tension
- Weight: 1.2 grams

DO-201AD



Dimensions in inches and (millimeters)

MAXIMUM RATINGS AND ELECTRICAL CHARACTERISTICS

Rating at 25°C ambient temperature unless otherwise specified.
Single phase, half wave, 60Hz, resistive or inductive load.
For capacitive load, derate current by 20%

Type Number		FR301	FR302	FR302	FR304	FR305	FR306	FR307	UNITS
Maximum Repetitive Peak Reverse Voltage	V _{RRM}	50	100	200	400	600	800	1000	v
Maximum RMS Voltage	V _{RMS}	35	70	140	280	420	560	700	v
Maximum DC Blocking Voltage	V _{DC}	50	100	200	400	600	800	1000	v
Maximum Average Forward Rectified Current .375"(9.5mm) Lead Length @T _A = 55°C	I _{F(AV)}	3.0							A
Peak Forward Surge Current, 8.3 ms Single Half Sine-wave Superimposed on Rated Load (JEDEC method)	I _{FSM}	150							A
Maximum Instantaneous Forward Voltage @3.0A	V _F	1.2							v
Maximum DC Reverse Current @ T _A = 25°C at Rated DC Blocking Voltage @ T _A = 100°C	I _R	10 150							uA uA
Maximum Reverse Recovery Time (Note 1)	T _{RR}	150				250	500		nS
Typical Junction Capacitance (Note 2)	C _J	60							pF
Operating Temperature Range	T _J	-55 to +125							°C
Storage Temperature Range	T _{STG}	-55 to +150							°C

NOTES: 1. Reverse Recovery Test Conditions: I_F=0.5A, I_R=1.0A, I_{RR}=0.25A
2. Measured at 1 MHz and Applied Reverse Voltage of 4.0 Volts D.C.

RATING AND CHARACTERISTIC CURVES FR301 THRU FR307



FIG.1- MAXIMUM FORWARD CURRENT DERATING CURVE

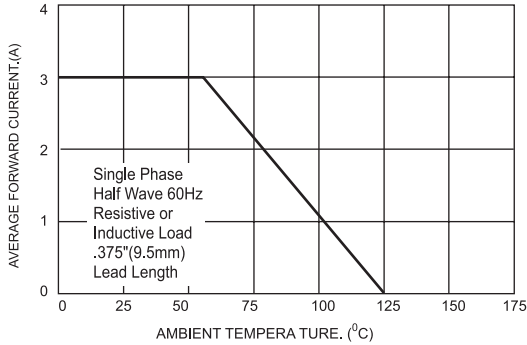


FIG.2- MAXIMUM NON-REPETITIVE PEAK FORWARD SURGE CURRENT

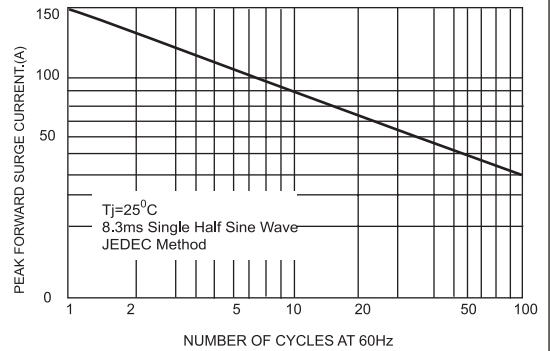


FIG.3-TYPICAL FORWARD CHARACTERISTICS

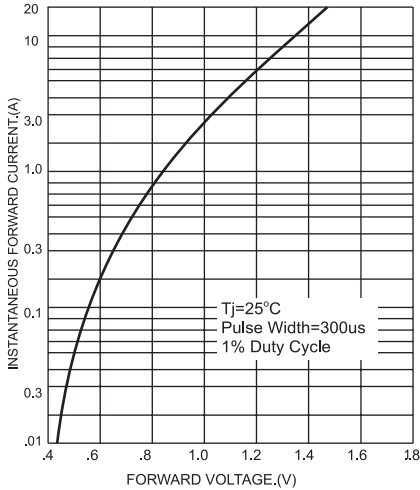


FIG.4- TYPICAL JUNCTION CAPACITANCE

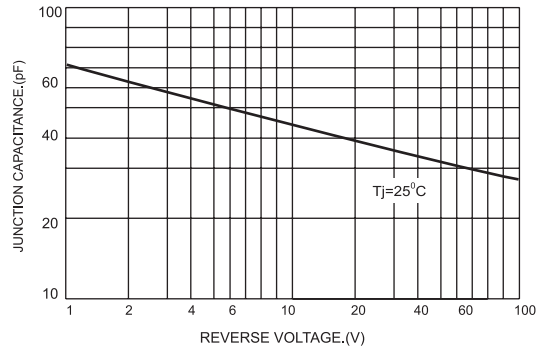
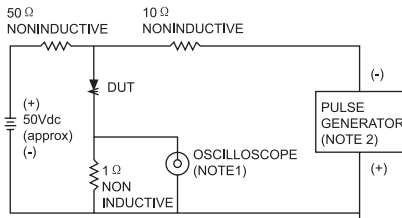


FIG.5- REVERSE RECOVER TIME CHARACTERISTIC AND TEST CIRCUIT DIAGRAM



- NOTES: 1. Rise Time=7ns max. Input Impedance= 1 megohm 22pf
2. Rise Time=10ns max. Source Impedance= 50 ohms

