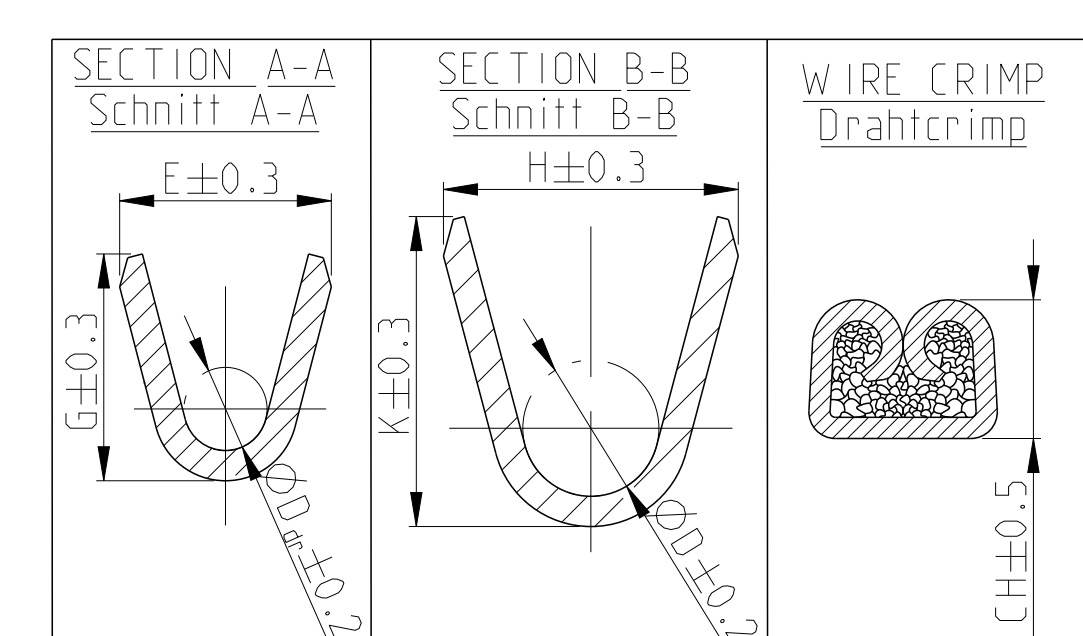


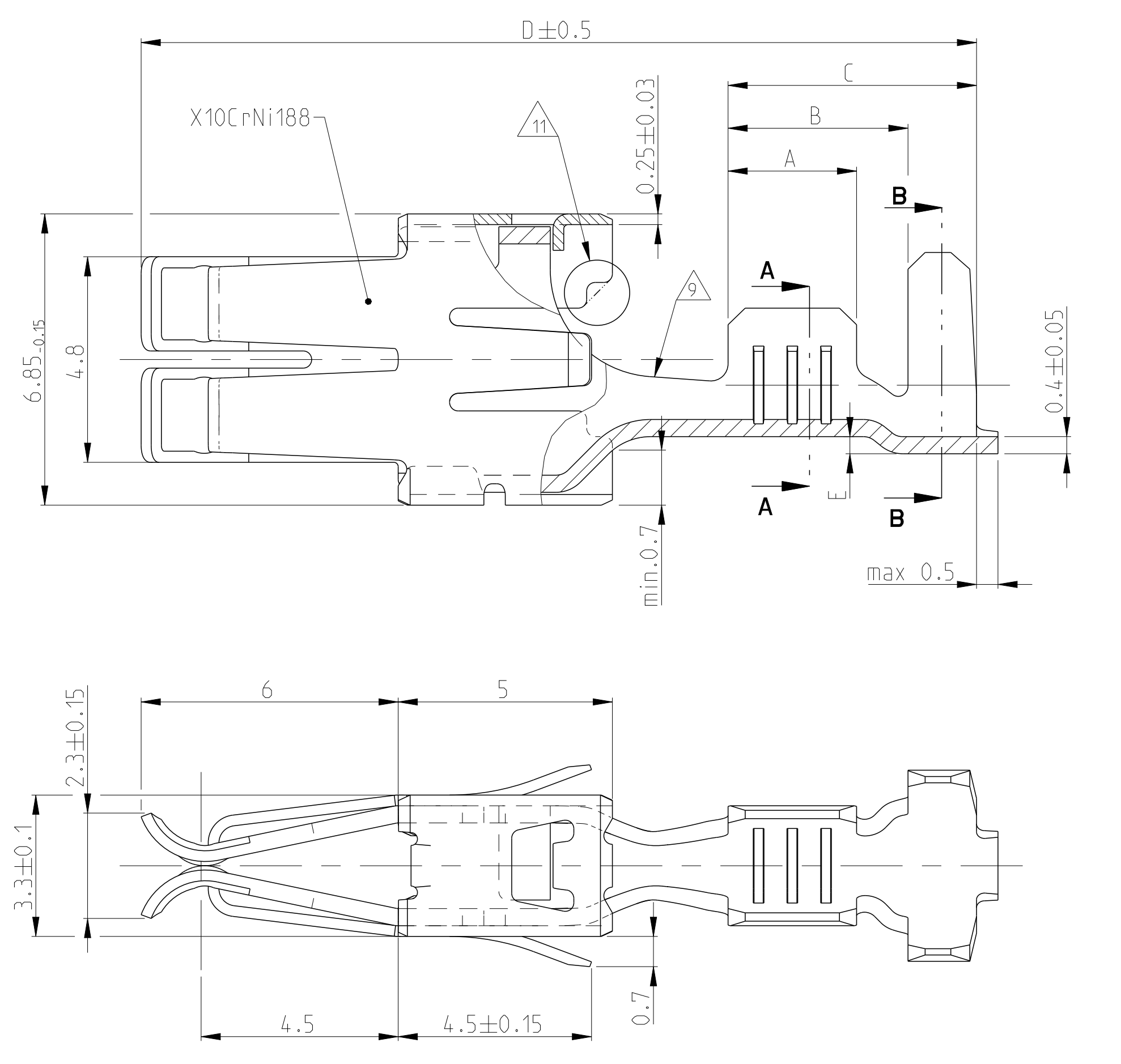
REV	DATE	DESCRIPTION	BY	CHK	APPV
B3	SEE ECR 12-016501		MSB2012	JS	RS
B4	ECR-14-010155		MAJ2014	S.K	J.P
B5	ECR-15-012070		MAJ2015	J.B.H	B.K
B6	ECR-15-017291		ODD2015	J.B.H	J.P



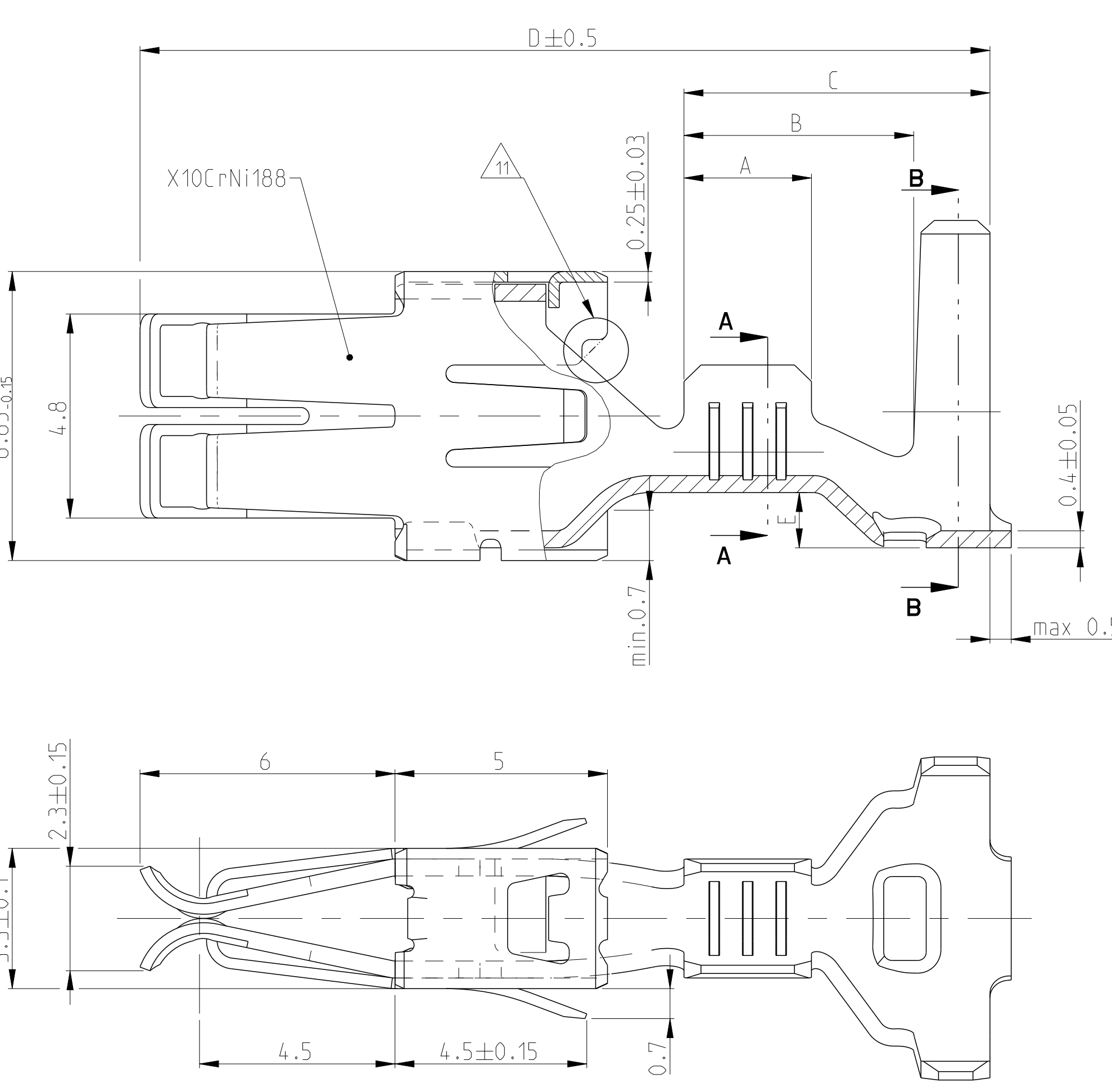
PART NO.	MATERIAL	SURFACE	PREP	Dwg. WIRE RANGE (mm²)	CRIMP DIMENSIONS (mm)			APPLICATION TOOL	HAND TOOL	EXTRACTION TOOL	A	B	C	D	E
					E	G	D								
927839-5	CuFe2	vorversilbert PRESILVERED	▲	0.2 - 0.5 FLK	E = 2.2	H = 3.7	0.20mm² = 1.13	MQC - Applicator 878426-2	539635-1 WITH DIE: mit Matrize 539744-2	2.5	3.8	6.6	19.5	0.3	
927827-2	CuSn4	vorverzinkt PRE TINNED	▲	0.5 - 1.0 FLK	E = 2.8	H = 4.5	0.5mm² = 1.38	MQC - Applicator 2-541689-2	539733-2 WITH DIE: mit Matrize 734249-0	3	4.2	5.8	19.5	0.4	
927833-5	CuFe2	▲	>1.0 - 2.5 FLK	E = 3.8	H = 5.7	1.5mm² = 1.76	MQC - Applicator 878367-2	539635-1 WITH DIE: mit Matrize 539733-2	3.5	4.7	6.3	19.5	0.4		
927824-2	CuSn4	vorversilbert PRESILVERED	▲	>2.5 - 4.0 FLK	E = 4.6	H = 6.3	3.0mm² = 2.13	MQC - Applicator 2-878314-2	539635-1 WITH DIE: mit Matrize 539733-2	4	5.2	6.8	19.5	0.6	
963709-5	CuFe2	vorversilbert PRESILVERED	▲	4.0 - 6.0 FLK	E = 5.2	H = 7.3	4.0mm² = 2.17	MQC - Applicator 2-878738-2		4.2	5.6	7.7	20	0.6	
963709-4	CuSn4	▲	G = 5.5		K = 7.6	5.0mm² = 2.36									
963709-3	CuFe2	▲	D = 2.9		D = 4.5	6.0mm² = 2.55									
1241818-6	B CuNiSi	▲	0.2 - 0.5 FLR	E = 2.2	H = 2.8	0.2mm² = 1.13	MQC - Applicator 878427-2	-	2.5	3.8	6.4	19.5	0.3		
1241818-5	B CuFe2	▲		G = 2.2	K = 2.8	0.35mm² = 1.19									
927831-5	CuFe2	vorversilbert PRESILVERED	▲	0.5 - 1.0 FLR	E = 2.8	H = 3.9	0.5mm² = 1.43	MQC - Applicator 878328-2	169400-0 WITH DIE: mit Matrize 734781-1	3	4.2	5.8	19.5	0.4	
927831-4	CuSn4	▲	G = 3.0		K = 4.1	0.75mm² = 1.52									
927831-3	CuSn4	▲	D = 1.1		D = 1.8	1.0mm² = 1.61									
927831-2	CuFe2	▲													
927837-5	CuFe2	vorversilbert PRESILVERED	▲	>1.0 - 2.5 FLR	E = 3.8	H = 4.8	1.25mm² = 1.69	MQC - Applicator 878356-2	169400-0 WITH DIE: mit Matrize 734251-0	3.5	4.7	6.3	19.5	0.4	
927837-6	D CuFe2	▲	G = 4.1		K = 4.9	1.5mm² = 1.76									
927837-5	D CuFe2	▲	D = 1.6		D = 2.6	2.5mm² = 2.04									
927837-4	D CuSn4	▲													
927829-5	D CuFe2	▲	>2.5 - 4.0 FLR	E = 4.6	H = 5.5	3.0mm² = 2.13	MQC - Applicator 2-878384-2	169400-0 WITH DIE: mit Matrize 734251-0	4	5.2	6.8	19.5	0.6		
927829-5	D CuFe2	▲		G = 4.8	K = 5.7	3.5mm² = 2.24									
927829-1	D CuFe2	▲		D = 2.4	D = 3.3	4.0mm² = 2.35									

PART NO.	MATERIAL	SURFACE	PREP	Dwg. WIRE RANGE (mm²)	CRIMP DIMENSIONS (mm)			APPLICATION TOOL	HAND TOOL	EXTRACTION TOOL	A	B	C	D	E
					E	G	D								
927836-2	CuSn4	▲	0.5 - 1.0 FLR	E = 2.8	H = 7.6	0.5mm² = 1.43	MQC - Applicator 878337-2	539635-1 WITH DIE: mit Matrize 739736-2	3	5.4	7.2	20	1.25	963243-1	100132-1
927836-2	CuFe2	▲		G = 3.0	K = 7.7	0.75mm² = 1.52									
927836-1	CuFe2	▲		D = 1.1	D = 5.6	1.0mm² = 1.61									
927835-2	CuSn4	▲	>1.0 - 2.5 FLR	E = 3.8	H = 7.6	1.5mm² = 1.76	MQC - Applicator 878338-2	WITH DIE: mit Matrize 539635-1	3.5	5.9	7.7	20	1.25	963244-1	100132-1
927835-1	CuSn4	▲		G = 4.1	K = 7.7	2.0mm² = 1.90									
927835-2	CuFe2	▲		D = 1.6	D = 5.6	2.5mm² = 2.04									
927835-1	CuFe2	▲													
928966-2	D CuSn4	▲	>2.5 - 4.0 FLR	E = 4.6	H = 7.6	3.0mm² = 2.13	MQC - Applicator 878441-2	539635-1 WITH DIE: mit Matrize 539736-2	4	5.9	7.7	20	1.25	963245-1	100132-1
928966-1	D CuSn4	▲		G = 4.8	K = 7.7										
928966-3	D CuFe2	▲		D = 2.4	D = 5.6	4.0mm² = 2.35									
928966-2	D CuFe2	▲													
1241962-1	B CuFe2	vorverzinkt PRE TINNED	>3.0 - 5.0 FLR	E = 4.8	H = 8.15	3.0mm² = 2.25	MQC - Applicator	WITH DIE: mit Matrize	4	5.9	7.7	20	1.25	967011-1	100132-1

VERSION A (UNSEALED / ungedichtet)



VERSION B (SINGLE WIRE SEAL / Einzel-Dichtungs-System)



▲ CONTACT ZONE SELECTIVE PRE SILVER PLATED MIN 3-4.5 µm Kontaktzone selektiv vorversilbert min. 3-4.5 µm

▲ CONTACT ZONE SELECTIVE PRE SILVER PLATED MIN 1-1.5 µm Kontaktzone selektiv vorversilbert min. 1-1.5 µm

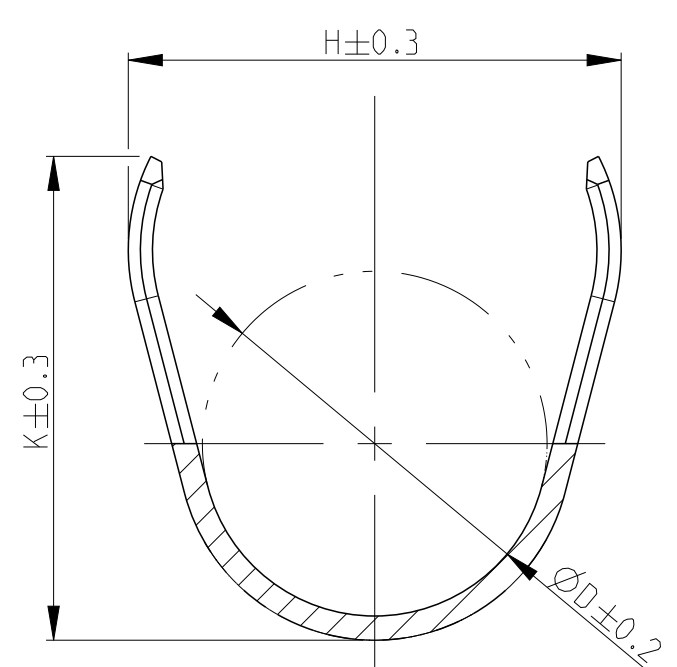
▲ CONTACT BODY: ELECTRO TIN PLATED OVER NICKEL CONTACT AREA: GOLD PLATED Kontaktkoerper: gal. verzinkt ueber Nickel Kontaktzone: vergoldet

▲ CONTACT BODY: ELECTRO TIN PLATED OVER NICKEL CONTACT AREA: SELECTIVE NICKEL PLATED 2-4 µm Kontaktkoerper: gal. verzinkt ueber Nickel Kontaktzone: selektiv vernickelt 2-4 µm

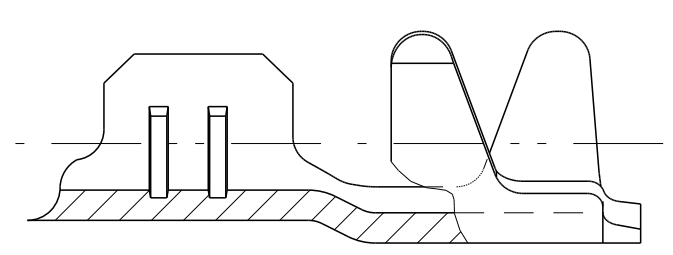
▲ CONTACT BODY: ELECTRO TIN PLATED OVER NICKEL TOUCHING AREA TO CANTILEVER SPRING: SELECTIVE AU PLATED OVER NICKEL CANTILEVER SPRING: COMPLETELY AU PLATED Kontaktkoerper: gal. verzinkt ueber Nickel Anlageflaeche zur Ueberfederer selektiv Au ueber Ni beschichtet Ueberfederer: komplett Au beschichtet

▲ CONTACT BODY: ELECTRO TIN PLATED OVER NICKEL TOUCHING AREA TO CANTILEVER SPRING AND CONTACT AREA SELECTIVE AU PLATED OVER NICKEL CANTILEVER SPRING: COMPLETELY AU PLATED Kontaktkoerper: gal. verzinkt ueber Nickel Anlageflaeche zur Ueberfederer Kontaktzone selektiv Au ueber Ni beschichtet Ueberfederer: komplett Au beschichtet

▲ PREFORMT ISO-AREA ONLY FOR PN: 1241962-1 Isoflanken vorgeformt nur bei PN:1241962-1



▲ WRAP CRIMP ONLY FOR PN:927839,927840,928989 AND 928990 Umfassungscrimp nur bei PN: 927839,927840,928989 und 928990



▲ TRANSITION ONLY FOR PN 927827,927828,927829,927830,927833,927834,927837,AND 927838 Uebergang nur fuer PN 927827,927828,927829,927830,927833,927834,927837,und 927838

▲ 1-3 µm Sn20M LAYER FOR HIGHER TEMPERATURE REQUIREMENTS 1-3 µm Sn20M Schicht fuer hoehere Temperaturanforderungen

▲ DOTTED LINE IS ALTERNATIVE SHAPE Gestrichelte Linie alternative Form

▲ OBSOLETE

DIMENSIONS	UNITS	SCALE	TITLE	DATE	BY	CHK	APPV
1:1	mm		STANDARD POWER TIMER CONTACT	2011	J.B.H.	J.P.	RS

Mouser Electronics

Authorized Distributor

Click to View Pricing, Inventory, Delivery & Lifecycle Information:

[TE Connectivity:](#)

[927831-2](#)