

THIS DRAWING IS UNPUBLISHED.

RELEASED FOR PUBLICATION

- , - .



COPYRIGHT

-

BY TYCO ELECTRONICS CORPORATION.

ALL RIGHTS RESERVED.

LOC

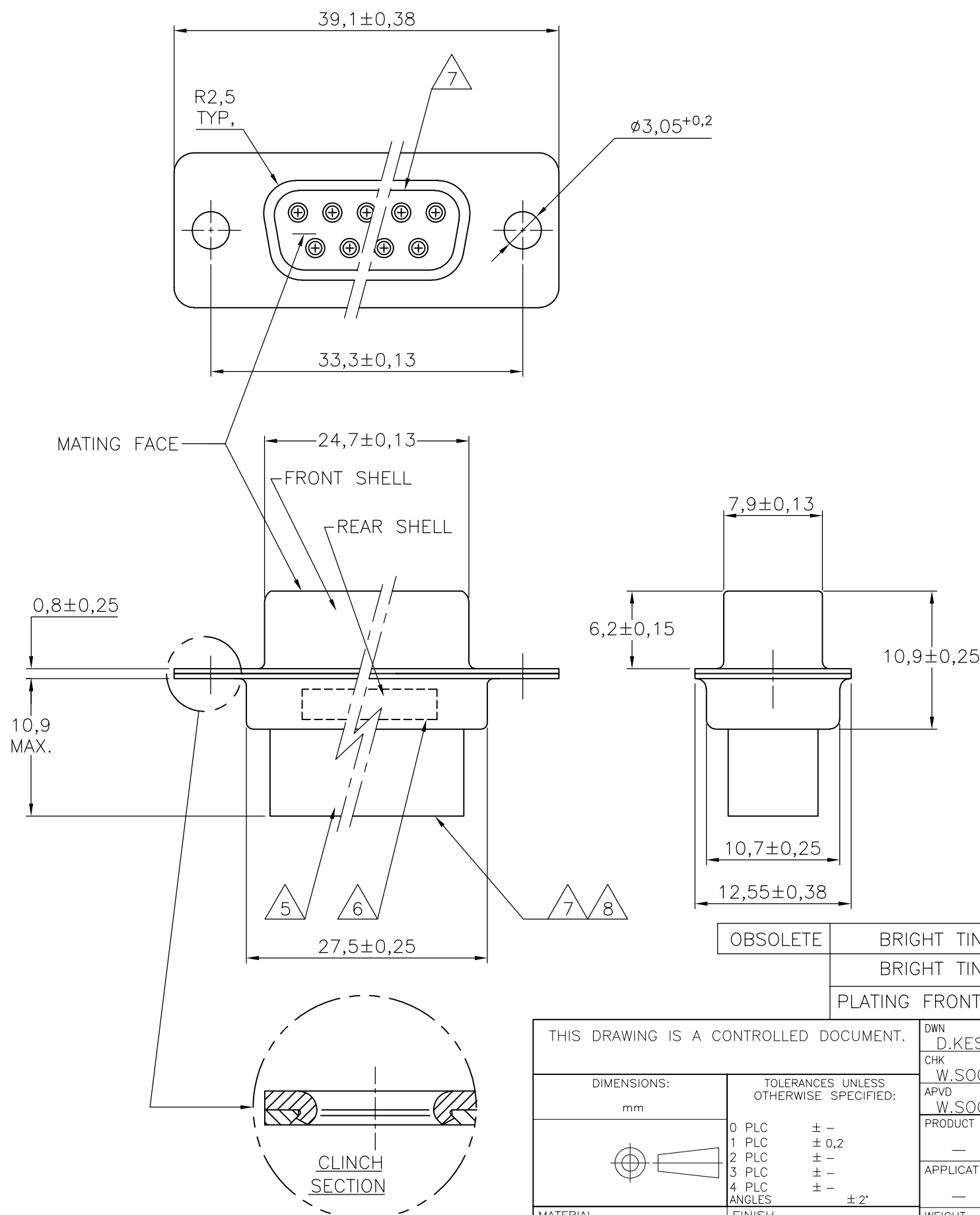
DIST

REVISIONS

P	LTR	DESCRIPTION	DATE	DWN	APVD
	M	ECR-07-008767	16-07-07	BSV	KMA
	P	ECR-09-004273	02-03-09	AEG	KMA
	P1	ECR-10-020025	13JAN11	RK	KMA

NOTES:

- 1 THIS RECEPTACLE ACCEPTS SIZE 20 REC. CONTACTS.
 - 2 MAXIMUM WIRE INSULATION RECOMMENDED FOR USE WITH THIS RECEPTACLE IS 1,73 DIA. MAX..
 - 3 RETENTION TINES ARE AN INTEGRAL PART OF INSERT.
 - 4 FOLLOWING INSERTION/REMOVAL TOOLS ARE RECOMMENDED FOR USE WITH THESE CONNECTORS:
32-28AWG/28-24AWG CONTACTS
91067-3 INSERTION/REMOVAL
726363-1 INSERTION ONLY
24-20AWG CONTACTS
726363-1 INSERTION ONLY
726364-1 REMOVAL ONLY
- 5 INSERTS: GLASSFILLED SELF-EXTINGUISHING PBT, COLOR BLACK.
- 6 TE, PARTNUMBER AND DATE CODE; INK STAMPED.
- 7 RAISED CAVITY IDENTIFICATION 0,8 HIGH.
- 8 RAISED CAVITY IDENTIFICATION NUMBERS ON WIRE SIDE ARE WHITENED FOR 164532-9.



OBSOLETE	BRIGHT TIN	BRIGHT TIN	STEEL	164532-9	8
	BRIGHT TIN	BRIGHT TIN	STEEL	164532-4	
	PLATING FRONT SHELL	PLATING REAR SHELL	MATERIAL SHELLS	PARTNUMBER	

THIS DRAWING IS A CONTROLLED DOCUMENT.

DWN D.KESSLER 11FEB99

CHK W.SOOMERS -

APVD W.SOOMERS -

PRODUCT SPEC

-

APPLICATION SPEC

WEIGHT -

CUSTOMER DRAWING

Tyco Electronics Corporation
's-Hertogenbosch, Nederland15 POS HDP-20 RECEPTACLE
CONNECTOR SIZE 2

SIZE A3 CAGE CODE - DRAWING NO C- 164532 RESTRICTED TO -

SCALE NTS SHEET 1 OF 1 REV P1

Mouser Electronics

Authorized Distributor

Click to View Pricing, Inventory, Delivery & Lifecycle Information:

[TE Connectivity:](#)

[164532-4](#)