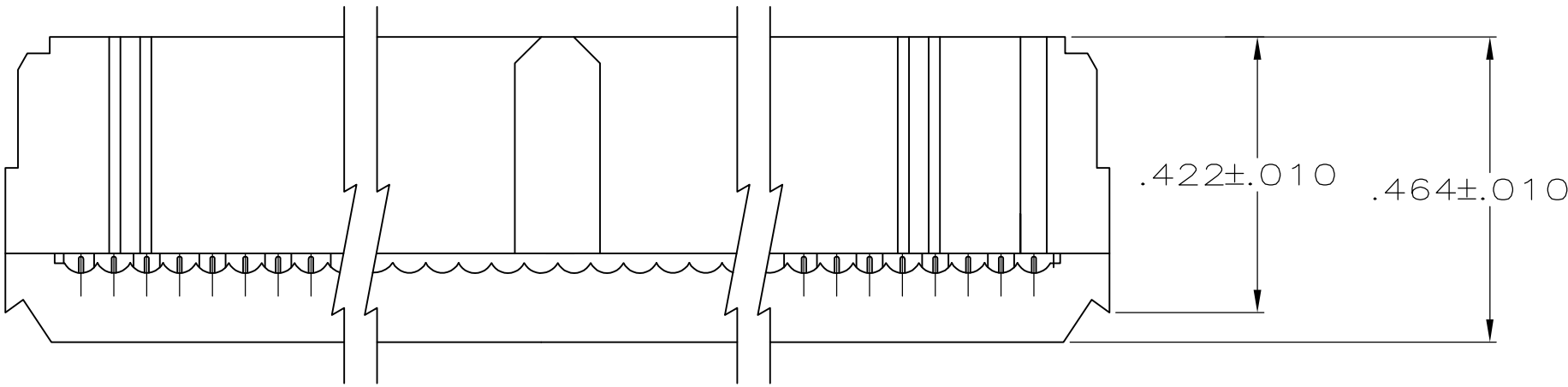


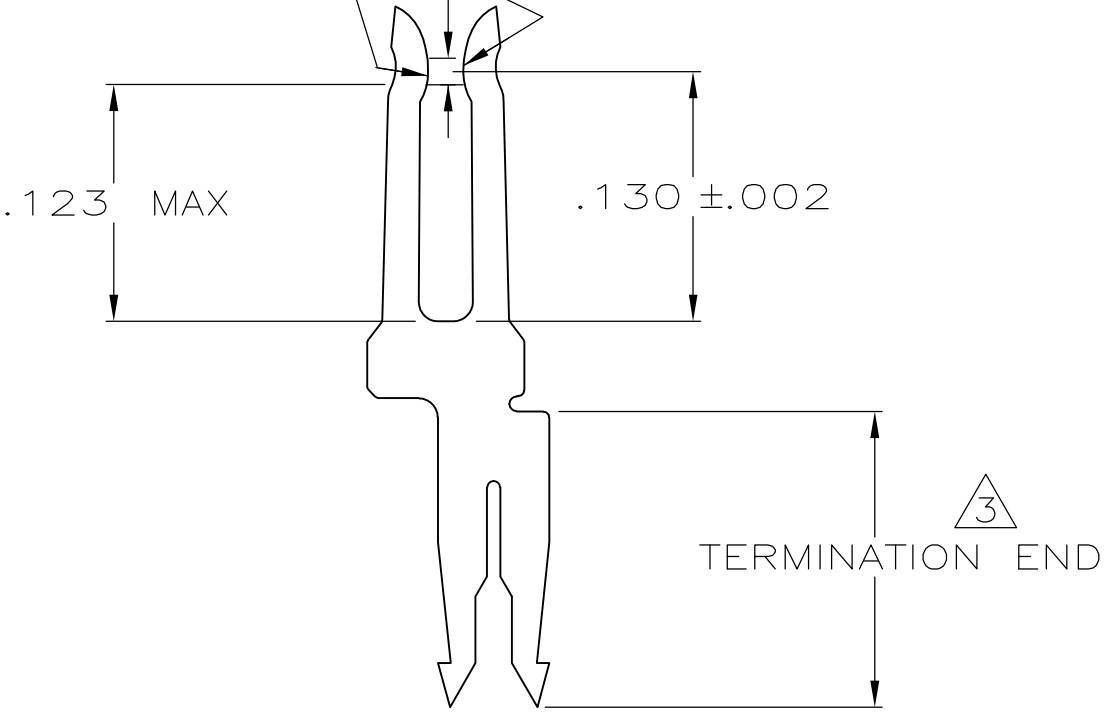
- 1
- 2
- 3
- 4
- MOLDED PARTS: UL RATED 94V-O THERMOPLASTIC, BLACK.
- CONTACTS: PHOSPHOR BRONZE PER QQ-B-750.
- CONTACTS: PLATED WITH .000015 MIN GOLD IN LOCALIZED GOLD PLATE AREA, .000050 MIN TIN ON TERMINATION END, ALL OVER .000050 MIN NICKEL ON ENTIRE CONTACT.
OR
GOLD FLASH OVER PALLADIUM-NICKEL PLATE .000015 MIN TOTAL IN LOCALIZED GOLD PLATE AREA, .000050 MIN TIN ON TERMINATION END, ALL OVER .000050 MIN NICKEL ON ENTIRE CONTACT.
- POLARIZING FEATURE DOES NOT EXIST ON SAME END AS THE POSITION NUMBER 1 INDICATOR ON 10 AND 14 POSITION PRODUCT.



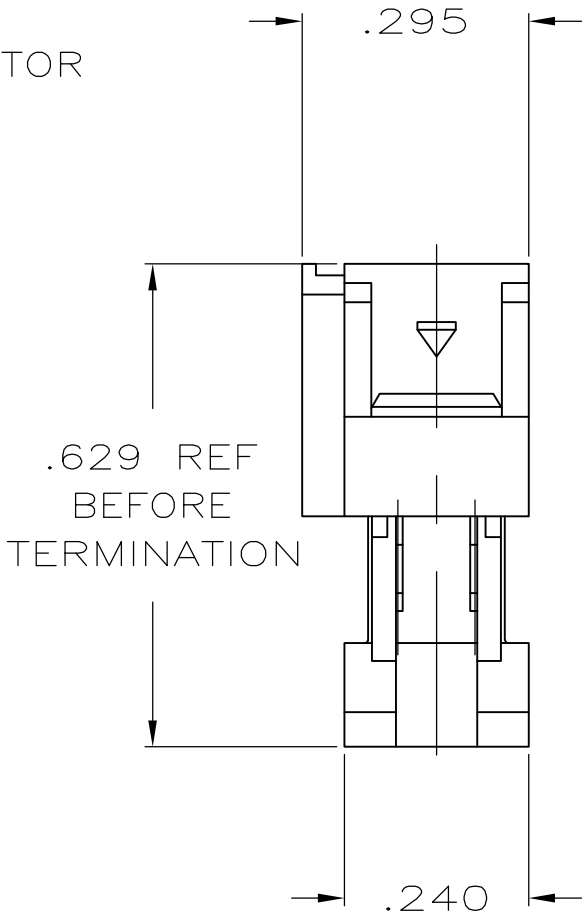
TERMINATED VIEW

LOCALIZED GOLD PLATING ON THIS SURFACE

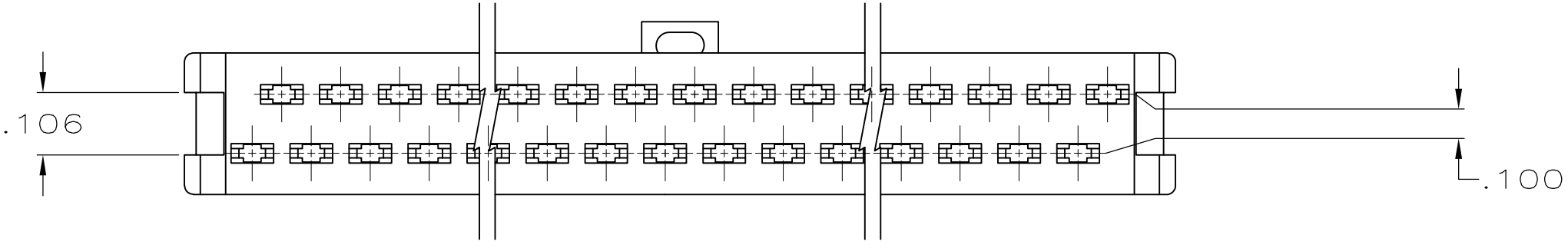
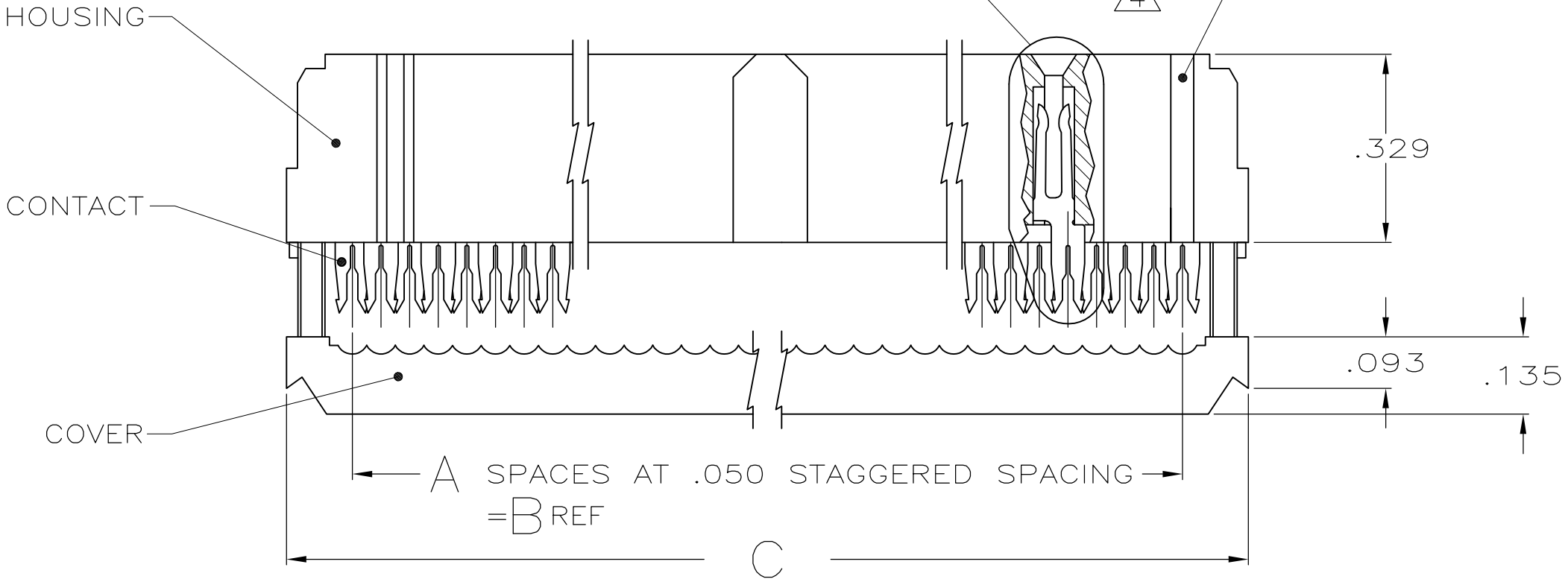
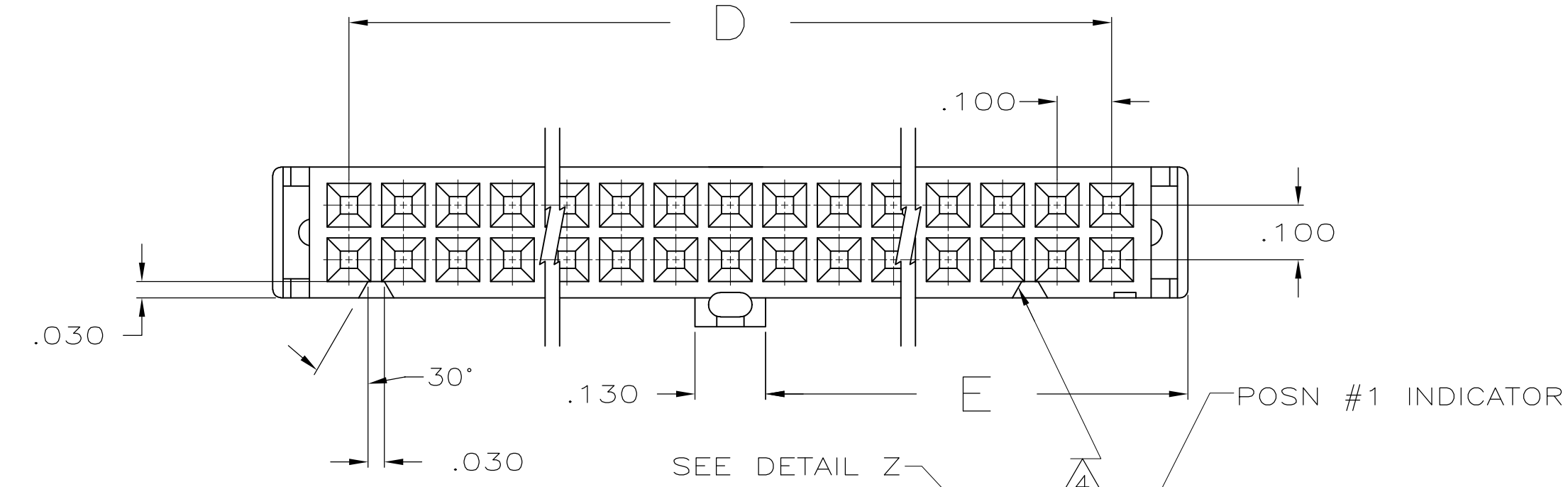
.014 MIN LOCALIZED GOLD PLATE AREA



DETAIL Z
SCALE 10:1
TYPICAL



1.125	2.100	2.380	2.150	43	44	1-1658621-3
1.625	3.100	3.380	3.150	63	64	1-1658621-2
1.525	2.900	3.180	2.950	59	60	1-1658621-1
1.275	2.400	2.680	2.450	49	50	1-1658621-0
1.025	1.900	2.180	1.950	39	40	1658621-9
.875	1.600	1.880	1.650	33	34	1658621-8
.775	1.400	1.680	1.450	29	30	1658621-7
.675	1.200	1.480	1.250	25	26	1658621-6
.625	1.100	1.380	1.150	23	24	1658621-5
.525	.900	1.180	.950	19	20	1658621-4
.425	.700	.980	.750	15	16	1658621-3
.375	.600	.880	.650	13	14	1658621-2
.275	.400	.680	.450	9	10	1658621-1
E	D	C	B	A	NO OF POSN	PART NUMBER



THIS DRAWING IS A CONTROLLED DOCUMENT.

DIMENSIONS:
INCHES

TOLERANCES UNLESS OTHERWISE SPECIFIED:
0 PLC ± -
1 PLC ± -
2 PLC ± -
3 PLC ± .005
4 PLC ± -
ANGLES ± 5°
FINISH SEE NOTES

MATERIAL
SEE NOTES

DWN
R. SAMICK
CHK
C. ROHDE
APVD
M. WALMSLEY
PRODUCT SPEC
108-40000
APPLICATION SPEC
114-40005
WEIGHT
-

CUSTOMER DRAWING

22AUG03
22AUG03
22AUG03

TE Connectivity

RECEPTACLE ASSY,
CENTER & MILITARY POLARIZATION,
LEAD FREE, AMP-LATCH™ NOVO

SIZE
A2

CAGE CODE
00779

DRAWING NO
C=1658621

RESTRICTED TO
-

SCALE
4:1

SHEET
1 of 1

REV
C1

Mouser Electronics

Authorized Distributor

Click to View Pricing, Inventory, Delivery & Lifecycle Information:

[TE Connectivity:](#)

[1658621-3](#)