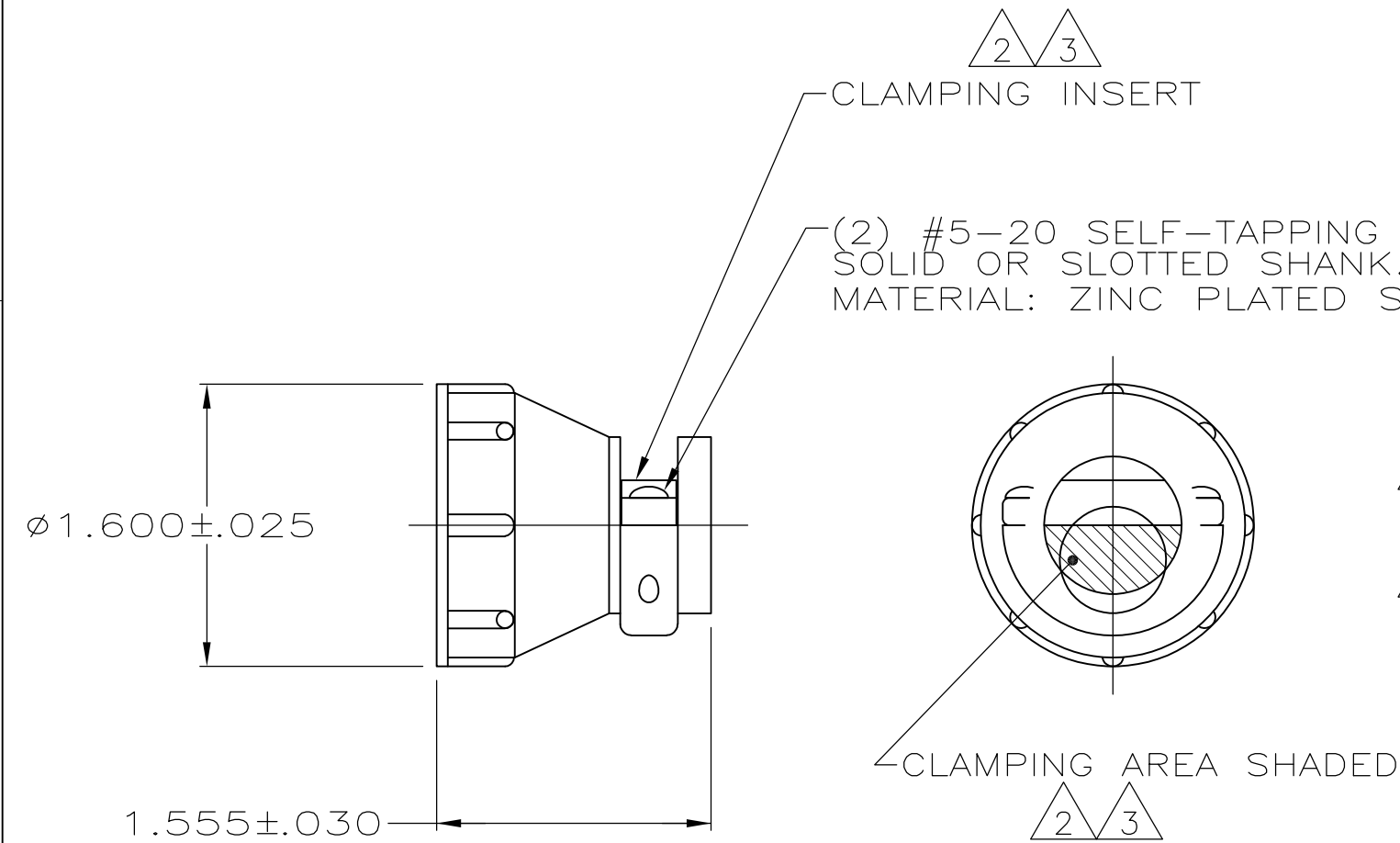


LOC	DIST	REVISIONS				
P	LTR	DESCRIPTION		DATE	DWN	APVD
	S4	REVISED PER ECO-11-004587		11MAR11	RK	HMR

- 1 PARTS PACKAGED UNASSEMBLED.
- 2 CABLE CLAMPING AREA ADJUSTABLE FROM .100 TO .410 SQ IN BY REVERSING CLAMPING INSERTS. (2 INSERTS SUPPLIED)
- 3 CABLE CLAMPING AREA ADJUSTABLE FROM .100 TO .410 SQ IN BY CHANGING CLAMPING INSERTS. (4 INSERTS SUPPLIED, -3 ONLY)
- 4 .703 MAXIMUM CABLE OUTSIDE DIAMETER.
- 5 BULK PACKAGED KITS TO BE ORDERED IN MULTIPLES OF 100 ONLY.
- 6 SCREW FINISH ZINC WITH NON-HEXAVALENT CHROMATE.
- 7 OBSOLETE PARTS: OBSOLETE CIS STREAMLINING PER D.RENAUD/D.SINISI



2	.75 ^{±.00} _{-.05}	INDIVIDUAL	1-206138-2
2	.75 ^{±.00} _{-.05} / .62 ^{±.00} _{-.05}	INDIVIDUAL	1-206138-1
2	.62 ^{±.00} _{-.05}	5 BULK	1-206138-0
2 7	OBSOLETE .62 ^{±.00} _{-.05}	SMALL PACK	-206138-9
2	.62 ^{±.00} _{-.05}	INDIVIDUAL	206138-8
2 7	SUPERSEDED BY 1-206138-1 .75 ^{±.00} _{-.05} / .62 ^{±.00} _{-.05}	INDIVIDUAL	-206138-7
7	OBSOLETE .62 ^{±.00} _{-.05}	SMALL PACK	-206138-6
	OBSOLETE	5 BULK	206138-3
2	SUPERSEDED BY 1-206138-0 .62 ^{±.00} _{-.05}	5 BULK	206138-2
2	SUPERSEDED BY 206138-8 .62 ^{±.00} _{-.05}	INDIVIDUAL	206138-1
SCREW LENGTH		PACKAGING	PART NUMBER

THIS DRAWING IS A CONTROLLED DOCUMENT.

DIMENSIONS: INCHES

MATERIAL THERMOPLASTIC

FINISH -

TOLERANCES UNLESS OTHERWISE SPECIFIED:

0 PLC ± -
1 PLC ± -
2 PLC ± -
3 PLC ± -
4 PLC ± -
ANGLES ± -

DWN A GRAFF 4/23/91
CHK W.G.LENKER 7-22-92
APVD -
PRODUCT SPEC 108-10024
APPLICATION SPEC -
WEIGHT -

STE TE Connectivity

CABLE CLAMP KIT, STANDARD, SHELL SIZE 23, CPC

SIZE A3 CAGE CODE 00779 DRAWING NO C-206138

CUSTOMER DRAWING

RESTRICTED TO -

SCALE NTS SHEET 1 OF 1 REV S4

Mouser Electronics

Authorized Distributor

Click to View Pricing, Inventory, Delivery & Lifecycle Information:

[TE Connectivity:](#)

[206138-8](#)