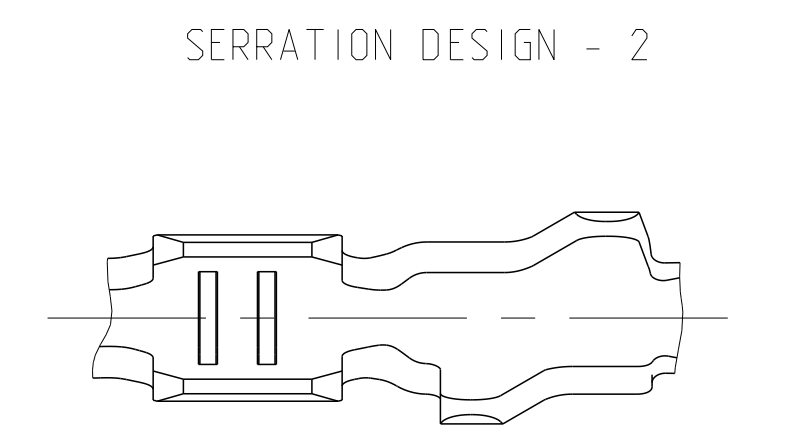
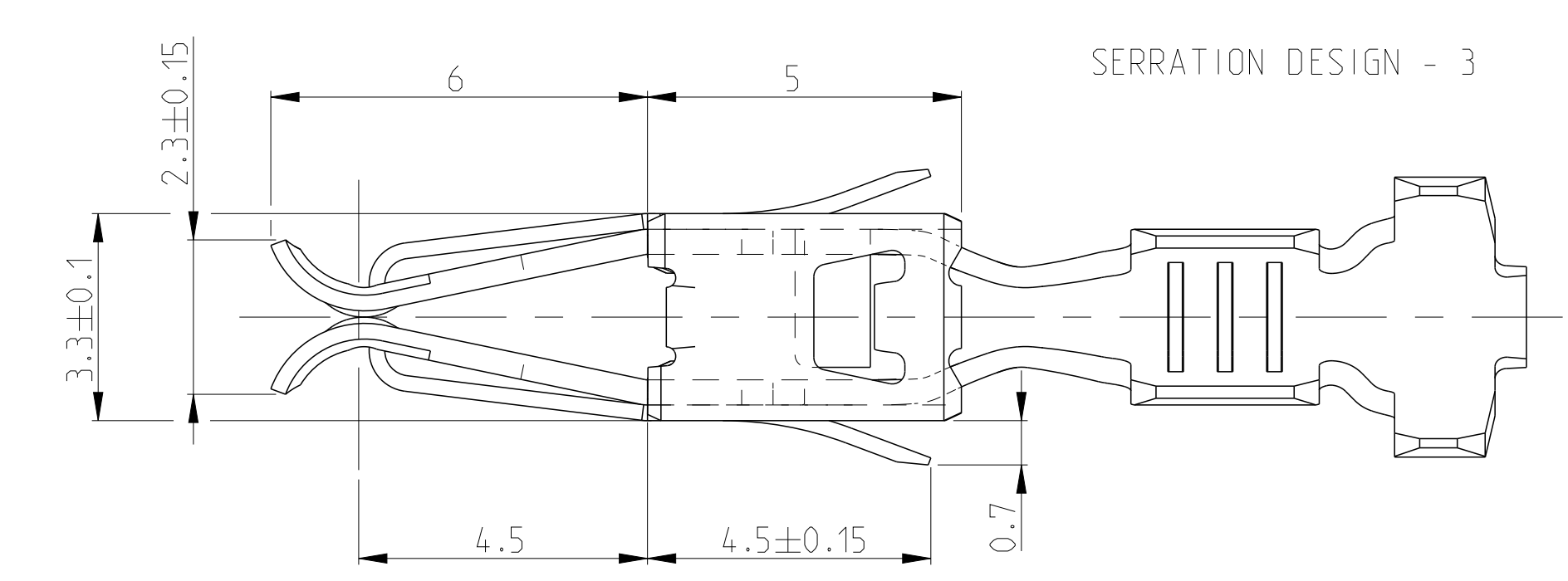
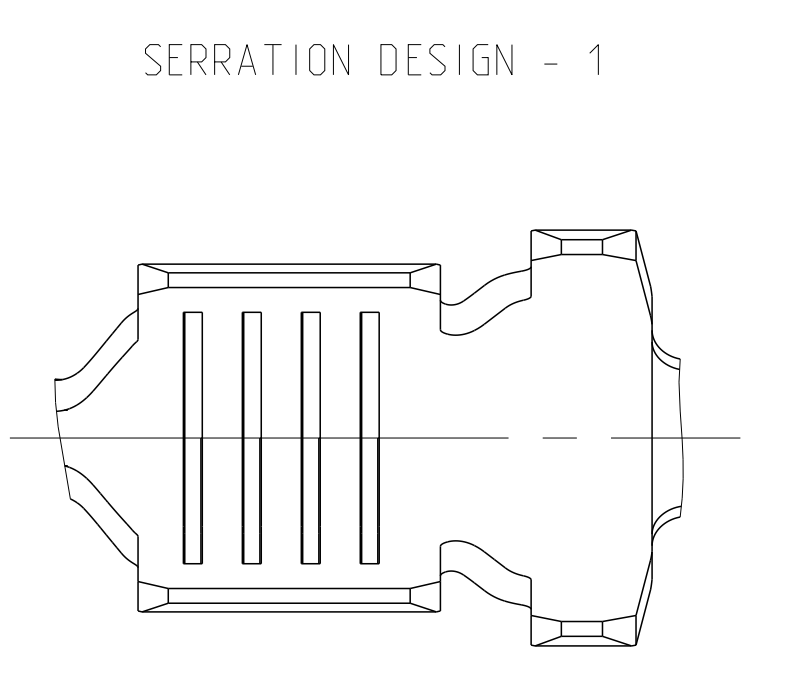
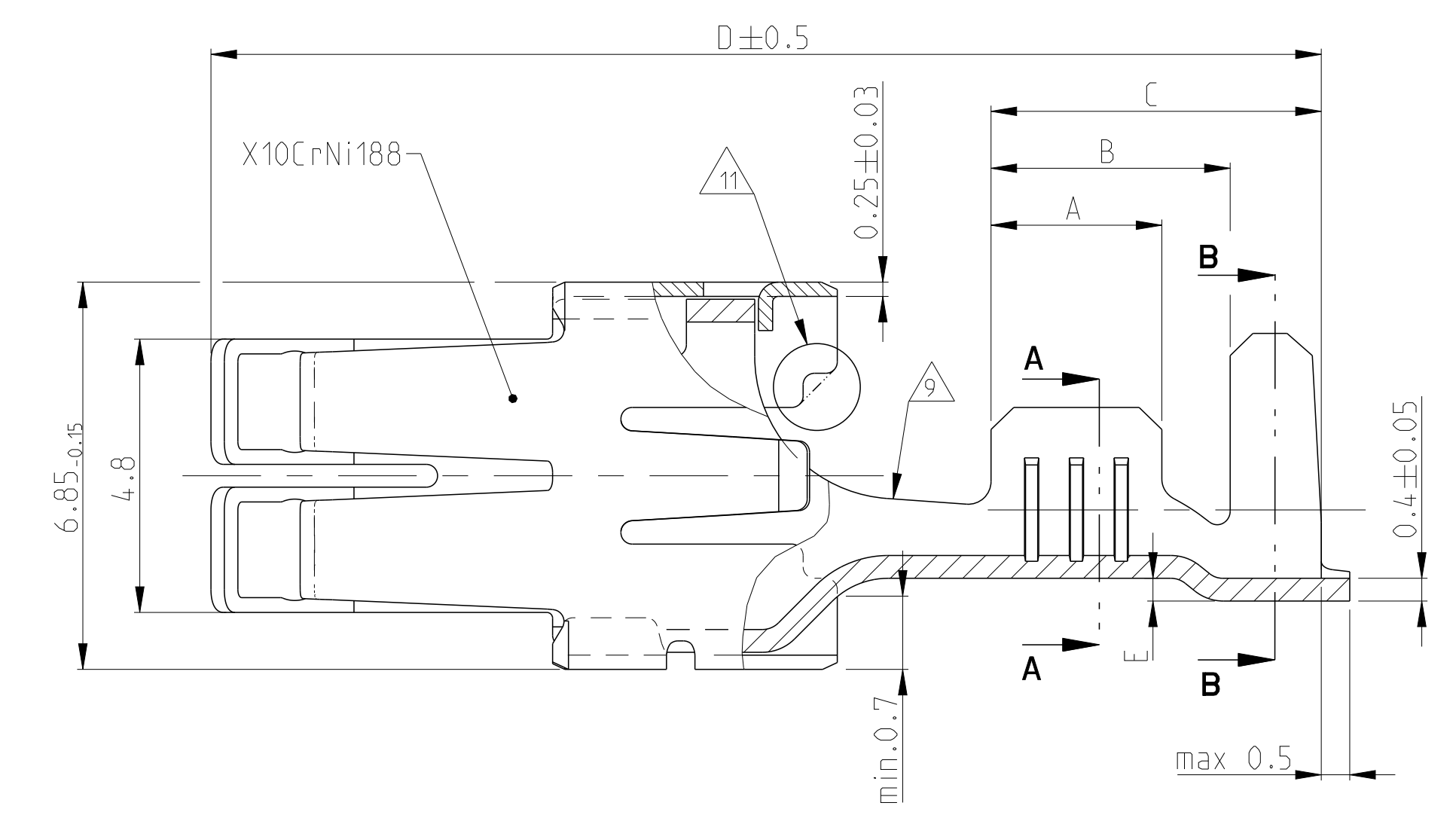
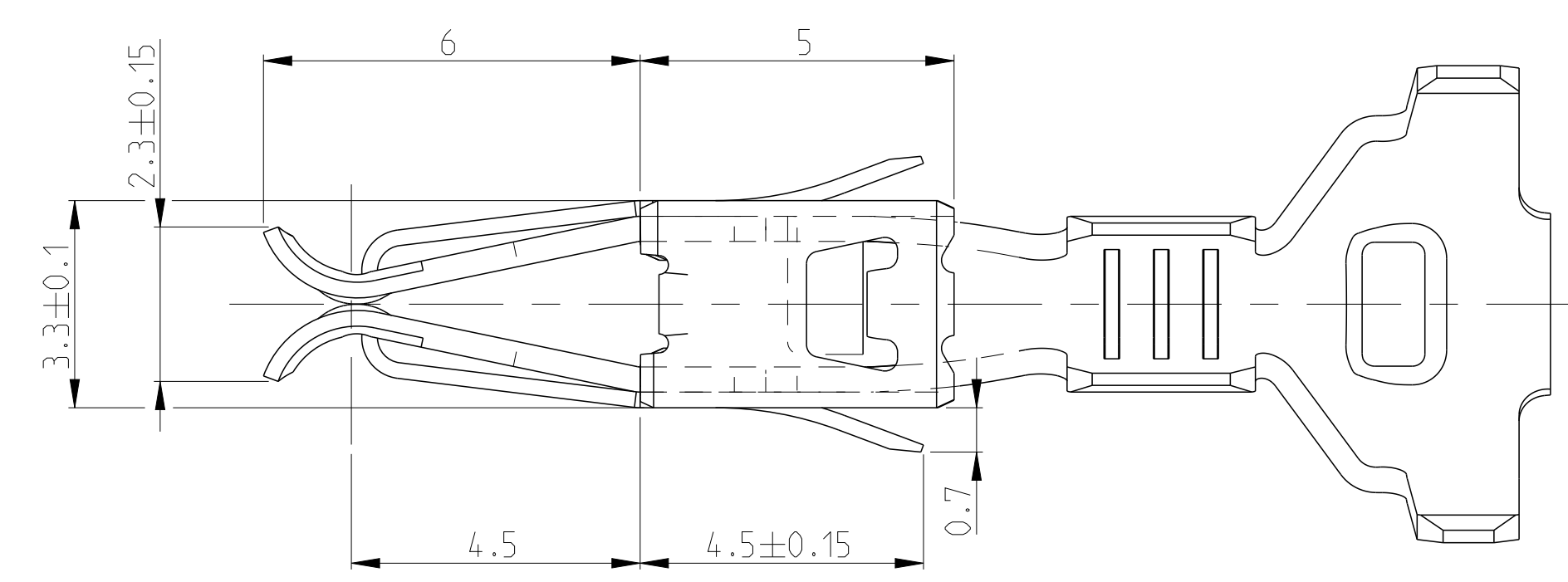
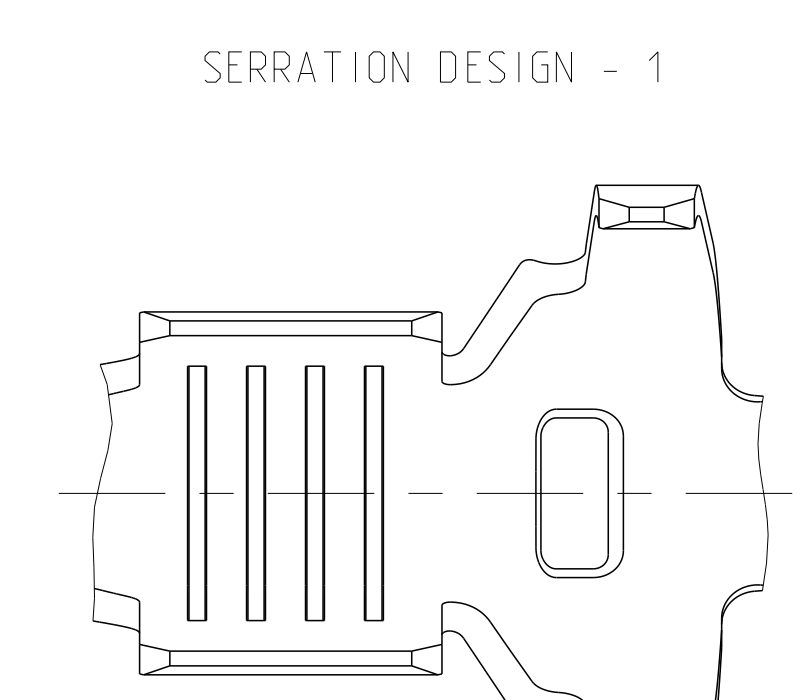
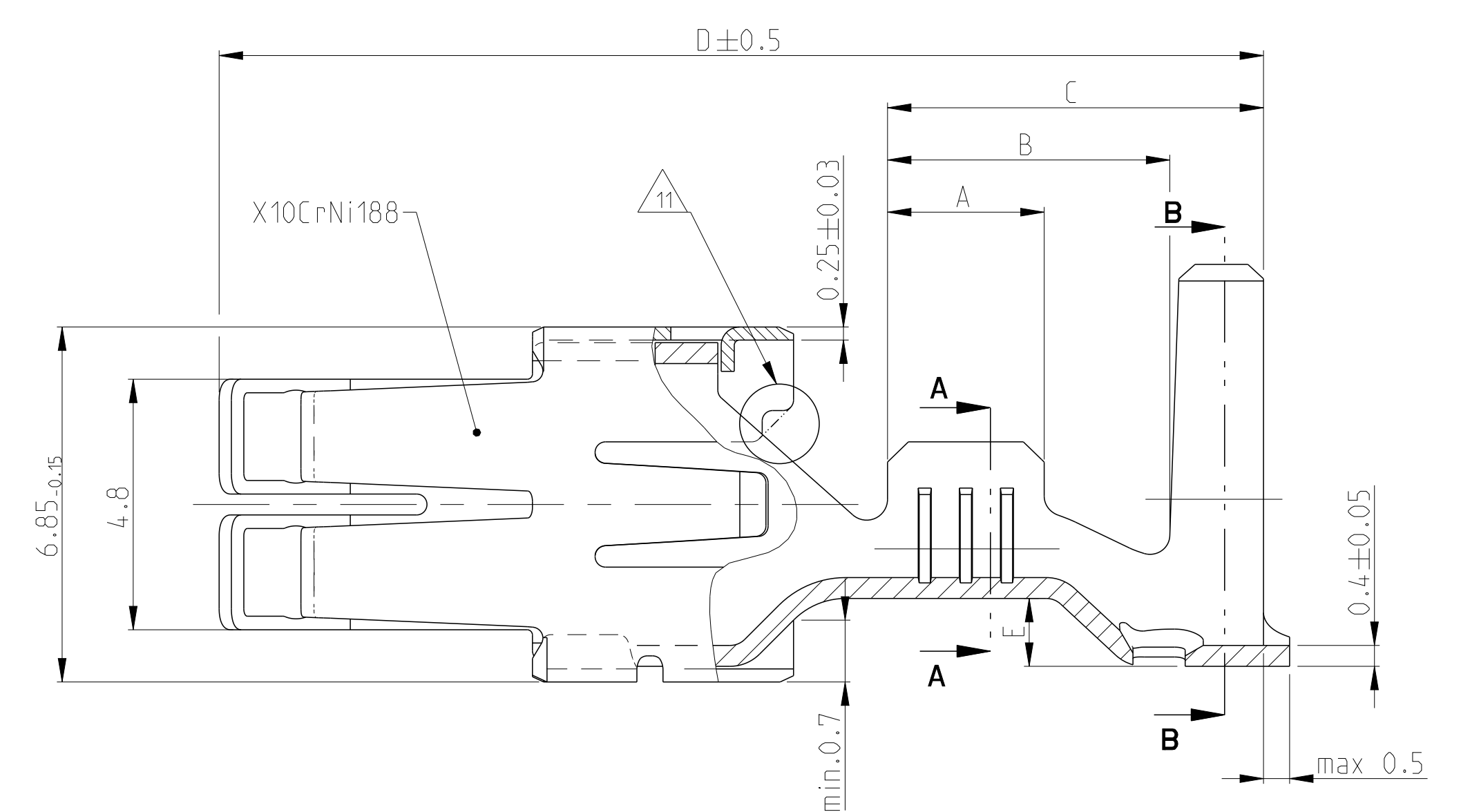


LOC	DISP	REV	DESCRIPTION	DATE	BY	APPV
A1	-	B6	ECR-15-017291	00DEC2015	JJM	JP
		B7	SERRATION VIEW'S ARE ADDED	19MAY2017	JJM	JP
		B8	ADDED REFERENCE TO SMT CRIMP HEIGHT	12JAN2018	JP	JP
		B9	REFER PCN E-20-014110	09EC2020	SEK	JC

VERSION A (UNSEALED / ungedichtet)



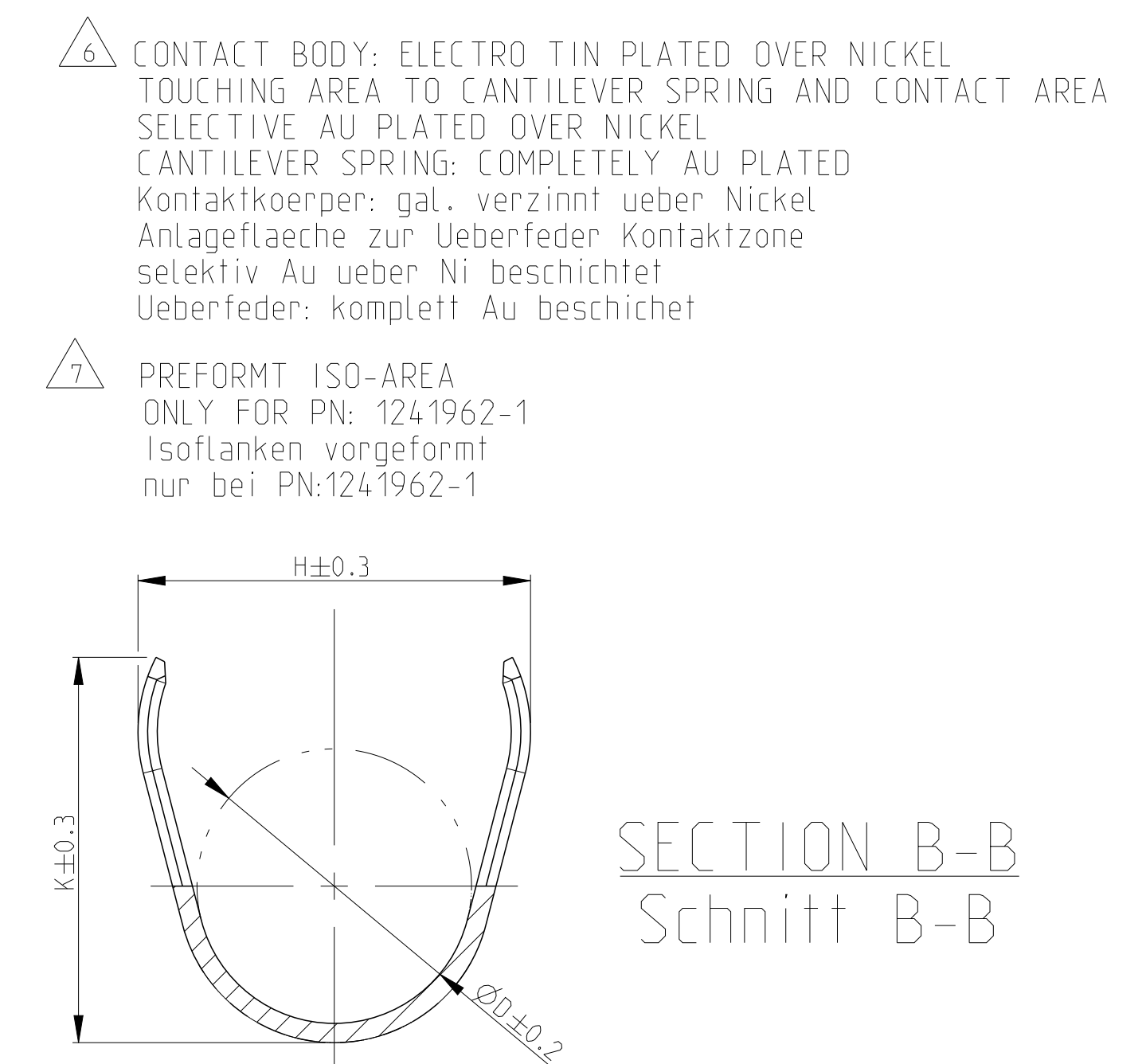
VERSION B (SINGLE WIRE SEAL / Einzel-Dichtungs-System)



SECTION A-A Schnitt A-A		SECTION B-B Schnitt B-B		WIRE CRIMP Drabtschrimp		
E±0.3 G±0.3 D±0.2		H±0.3 K±0.3 D _b ±0.2		C±0.5		
0.2 - 0.5 FLK	E = 2.2 G = 2.2 D _b = 0.8	H = 3.7 K = 3.8 D _b = 2.0	0.20mm ² = 1.13 0.25mm ² = 1.15 0.35mm ² = 1.19 0.50mm ² = 1.26	MQC- Applicator 878426-2	539635-1 WITH DIE: mit Matrize 539744-2	2.5 3.8 6.6 19.5 0.3
0.5 - 1.0 FLK	E = 2.8 G = 3.0 D _b = 1.1	H = 4.5 K = 4.7 D _b = 2.4	0.5mm ² = 1.38 0.75mm ² = 1.47 1.0mm ² = 1.56	MQC- Applicator 2-541689-2	539733-2 WITH DIE: mit Matrize 734269-0	3 4.2 5.8 19.5 0.4
>1.0 - 2.5 FLK	E = 3.8 G = 4.1 D _b = 1.6	H = 5.7 K = 5.8 D _b = 3.6	1.5mm ² = 1.76 2.0mm ² = 1.90 2.5mm ² = 2.04	MQC- Applicator 878367-2	539635-1 WITH DIE: mit Matrize 539733-2	3.5 4.7 6.3 19.5 0.4
>2.5 - 4.0 FLK	E = 4.6 G = 4.8 D _b = 2.4	H = 6.3 K = 6.6 D _b = 4.0	3.0mm ² = 2.13 3.5mm ² = 2.32 4.0mm ² = 2.35	MQC- Applicator 2-878314-2	539635-1 WITH DIE: mit Matrize 539734-2	4 5.2 6.8 19.5 0.6
4.0 - 6.0 FLK	E = 5.2 G = 5.5 D _b = 2.9	H = 7.3 K = 7.6 D _b = 4.5	4.0mm ² = 2.17 5.0mm ² = 2.36 6.0mm ² = 2.55	MQC- Applicator 2-878738-2	-	4.2 5.6 7.7 20 0.6
0.2 - 0.5 FLR	E = 2.2 G = 2.2 D _b = 0.8	H = 2.8 K = 2.8 D _b = 1.4	0.2mm ² = 1.13 0.35mm ² = 1.19 0.5mm ² = 1.26	MQC- Applicator 878427-2	-	2.5 3.8 6.6 19.5 0.3
0.5 - 1.0 FLR	E = 2.8 G = 3.0 D _b = 1.1	H = 3.9 K = 4.1 D _b = 1.8	0.5mm ² = 1.43 0.75mm ² = 1.52 1.0mm ² = 1.61	MQC- Applicator 878328-2	169400-0 WITH DIE: mit Matrize 734781-1	3 4.2 5.8 19.5 0.4
>1.0 - 2.5 FLR	E = 3.8 G = 4.1 D _b = 1.6	H = 4.8 K = 4.9 D _b = 2.6	1.25mm ² = 1.69 1.5mm ² = 1.76 2.0mm ² = 1.90 2.5mm ² = 2.04	MQC- Applicator 878356-2	169400-0 WITH DIE: mit Matrize 734251-0	3.5 4.7 6.3 19.5 0.4
>2.5 - 4.0 FLR	E = 4.6 G = 4.8 D _b = 2.4	H = 5.5 K = 5.7 D _b = 3.3	3.0mm ² = 2.13 3.5mm ² = 2.24 4.0mm ² = 2.35	MQC- Applicator 2-878384-2	169400-0 WITH DIE: mit Matrize 734251-0	4 5.2 6.8 19.5 0.6

SECTION A-A Schnitt A-A		SECTION B-B Schnitt B-B		WIRE CRIMP Drabtschrimp		
E±0.3 G±0.3 D±0.2		H±0.3 K±0.3 D _b ±0.2		C±0.5		
0.5 - 1.0 FLR	E = 2.8 G = 3.0 D _b = 1.1	H = 7.6 K = 7.7 D _b = 5.6	0.5mm ² = 1.43 0.75mm ² = 1.52 1.0mm ² = 1.61	MQC- Applicator 878337-2	539635-1 WITH DIE: mit Matrize 739736-2	3 5.4 7.2 20 1.25 963243-1 963244-1 100132-1
>1.0 - 2.5 FLR	E = 3.8 G = 4.1 D _b = 1.6	H = 7.6 K = 7.7 D _b = 5.6	1.5mm ² = 1.76 2.0mm ² = 1.90 2.5mm ² = 2.04	MQC- Applicator 878338-2	539635-1 WITH DIE: mit Matrize 539736-2	3.5 5.9 7.7 20 1.25 963244-1 963245-1 100132-1
>2.5 - 4.0 FLR	E = 4.6 G = 4.8 D _b = 2.4	H = 7.6 K = 7.7 D _b = 5.6	3.0mm ² = 2.13 4.0mm ² = 2.35	MQC- Applicator 878441-2	539635-1 WITH DIE: mit Matrize 539736-2	4 5.9 7.7 20 1.25 963245-1 100132-1
>3.0 - 5.0 FLR	E = 4.8 G = 5.2 D _b = 2.5	H = 8.15 K = 7.8 D _b = 6.0	3.0mm ² = 2.25 4.0mm ² = 2.50 5.0mm ² = 2.75	MQC- Applicator -	WITH DIE: mit Matrize	4 5.9 7.7 20 1.25 967011-1 963245-1 100132-1

- CONTACT ZONE SELECTIVE PRE SILVER PLATED MIN 3-4.5 μm Kontaktzone selektiv vorversilbert min. 3-4.5 μm
- CONTACT ZONE SELECTIVE PRE SILVER PLATED MIN 1-1.5 μm Kontaktzone selektiv vorversilbert min. 1-1.5 μm
- CONTACT BODY: ELECTRO TIN PLATED OVER NICKEL CONTACT AREA: GOLD PLATED Kontaktkoerper: gal. verzinkt ueber Nickel Kontaktzone: vergoldet
- CONTACT BODY: ELECTRO TIN PLATED OVER NICKEL CONTACT AREA: SELECTIVE NICKEL PLATED 2-4 μm Kontaktkoerper: gal. verzinkt ueber Nickel Kontaktzone: selektiv vernickelt 2-4 μm
- CONTACT BODY: ELECTRO TIN PLATED OVER NICKEL TOUCHING AREA TO CANTILEVER SPRING: SELECTIVE AU PLATED OVER NICKEL CANTILEVER SPRING: COMPLETELY AU PLATED Kontaktkoerper: gal. verzinkt ueber Nickel Anlageflaeche zur Ueberfeder selektiv Au ueber Ni beschichtet Ueberfeder: komplett Au beschichtet



- WRAP CRIMP ONLY FOR PN: 927839, 927840, 928989 AND 928990 Umfassungsschrimp nur bei PN: 927839, 927840, 928989 und 928990
- TRANSITION ONLY FOR PN 927827, 927828, 927829, 927830, 927833, 927834, 927837, AND 927838 Uebergang nur fuer PN 927827, 927828, 927829, 927830, 927833, 927834, 927837, und 927838
- 1-3 μm Sn28M LAYER FOR HIGHER TEMPERATURE REQUIREMENTS 1-3 μm Sn28M Schicht fuer hoehere Temperaturanforderungen
- DOTTED LINE IS ALTERNATIVE SHAPE Gestrichelte Linie alternative Form
- OBsolete
- SEE APPLICATION SPEC. FOR PREFERRED STANDARD TO MEET NEW REQUIREMENT 8LV214-2 SLOW MOTION BENDING TEST Siehe Verarbeitungs Spezifikation fuer bevorzugten Standard um den neuen Anforderungen der LV214-2 Slow Motion Pruefung zu genuegen

THIS DRAWING IS A CONTROLLED DOCUMENT. DATE: 19MAY2017. DRAWN BY: J. HUHN. CHECKED BY: J. HUHN. APPROVED BY: J. HUHN. PRODUCT SPEC: 108-18025. APPLICATION SPEC: 114-18037. WEIGHT: -. SCALE: 1:1. SHEET: 1 of 1. REV: B9.

STANDARD POWER TIMER CONTACT
Standard Power Timer Kontakt

EXTRACTION TOOL: T-1579007-6 968107-1