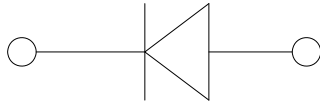
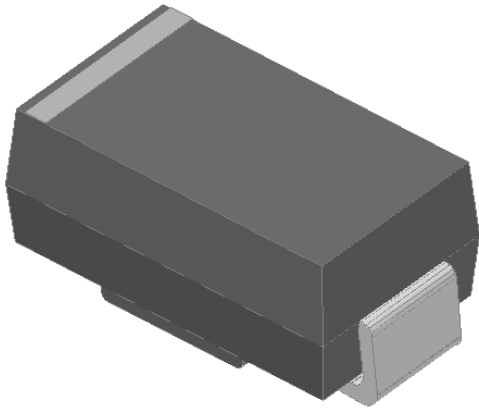


Surface Mount General Purpose Rectifier



Features

- Low profile package
- Ideal for automated placement
- Glass passivated chip junction
- High forward surge capability
- Meets MSL level 1, per J-STD-020, LF maximum peak of 260 °C
- Part no. with suffix "Q" means AEC-Q101 qualified

Typical Applications

For use in general purpose rectification of power supplies, inverters, converters, and freewheeling diodes for consumer, automotive and telecommunication.

Mechanical Data

- **Package:** DO-214AC (SMA)
Molding compound meets UL 94 V-0 flammability rating, RoHS-compliant, halogen-free
- **Terminals:** Tin plated leads, solderable per J-STD-002 and JESD22-B102
- **Polarity:** Cathode line denotes the cathode end

■ Maximum Ratings (Ta=25°C Unless otherwise specified)

PARAMETER	SYMBOL	UNIT	GS1AQ	GS1BQ	GS1DQ	GS1GQ	GS1JQ	GS1KQ	GS1MQ
Device marking code			GS1A	GS1B	GS1D	GS1G	GS1J	GS1K	GS1M
Repetitive peak reverse voltage	V _{RRM}	V	50	100	200	400	600	800	1000
Maximum RMS voltage	V _{RMS}	V	35	70	140	280	420	560	700
Maximum DC blocking voltage	V _{DC}	V	50	100	200	400	600	800	1000
Average rectified output current @60Hz sine wave, Resistance load, Ta (Fig.1)	I _O	A	1.0						
Surge(non-repetitive)forward current @ 60Hz Half-sine wave, 1 cycle, Ta=25°C	I _{FSM}	A	40						
Current squared time @1ms≤t≤8.3ms TJ=25°C, Rating of per diode	I ² t	A ² S	6.64						
Storage temperature	T _{stg}	°C	-55~+150						
Junction temperature	T _J	°C	-55 ~ +150						



GS1AQ THRU GS1MQ

■ Electrical Characteristics (T_a=25°C Unless otherwise specified)

PARAMETER	SYMBOL	UNIT	TEST CONDITIONS	GS1AQ	GS1BQ	GS1DQ	GS1GQ	GS1JQ	GS1KQ	GS1MQ
Maximum instantaneous forward voltage drop per diode	V _F	V	I _{FM} =1.0A	1.1						
Typical junction capacitance	C _J	pF	4V, 1 MHz	16					12	
Maximum DC reverse current at rated DC blocking voltage per diode @ V _{RM} =V _{RRM}	I _{RRM}	μA	T _a =25°C	5						
			T _a =125°C	50						

■ Thermal Characteristics (T_a=25°C Unless otherwise specified)

PARAMETER	SYMBOL	UNIT	GS1AQ	GS1BQ	GS1DQ	GS1GQ	GS1JQ	GS1KQ	GS1MQ	
Thermal Resistance	R _{θJ-A(1)}	°C/W	75 ⁽¹⁾						85 ⁽¹⁾	
	R _{θJ-L(1)}	°C/W	27 ⁽¹⁾						30 ⁽¹⁾	

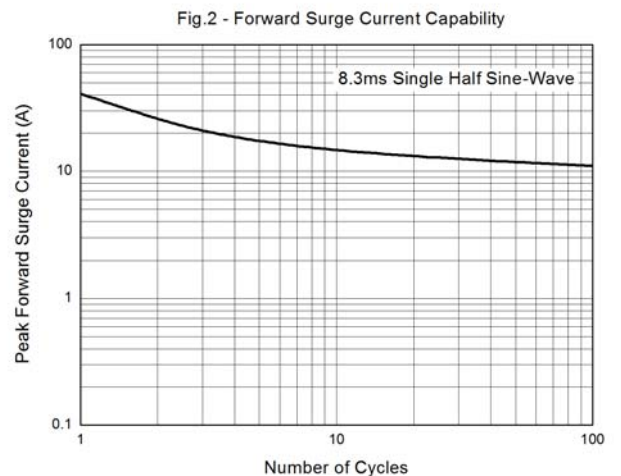
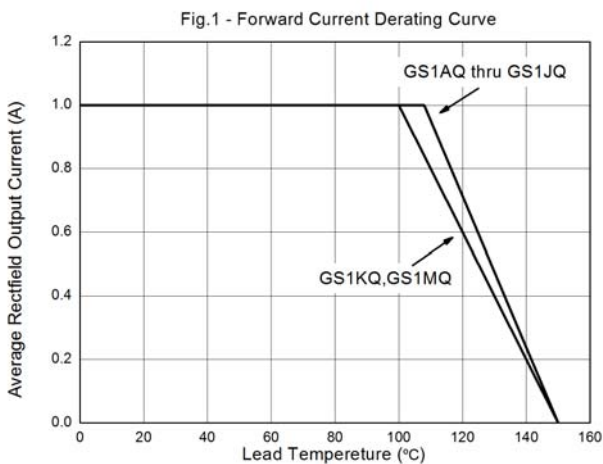
Note

(1) Thermal resistance from junction to ambient and from junction to lead mounted on P.C.B. with 0.2" x 0.2" (5.0 mm x 5.0 mm) copper pad areas

■ Ordering Information (Example)

PREFERRED P/N	PACKAGE CODE	UNIT WEIGHT(g)	MINIMUM PACKAGE(pcs)	INNER BOX QUANTITY(pcs)	OUTER CARTON QUANTITY(pcs)	DELIVERY MODE
GS1AQ- GS1MQ	F2	Approximate 0.067	7500	/	120000	13" reel

■ Characteristics (Typical)





GS1AQ THRU GS1MQ

Fig.3-Typical Forward Characteristics

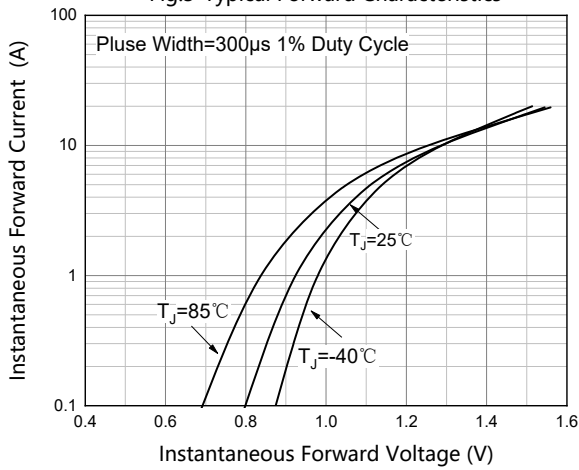


Fig.4 - Typical Reverse Leakage Characteristics

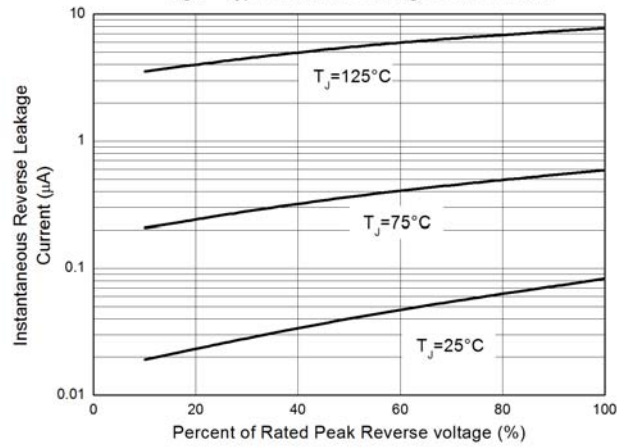
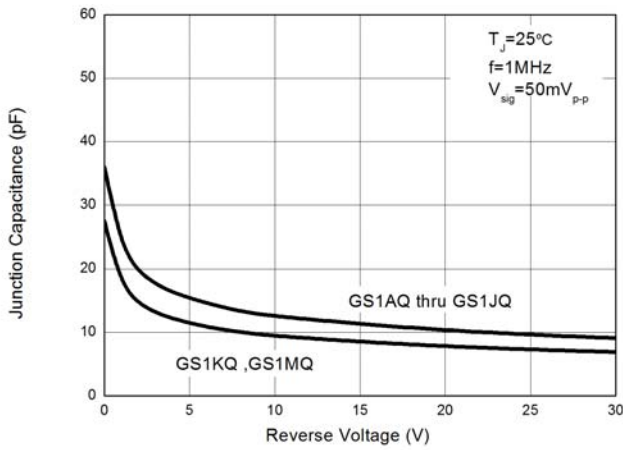


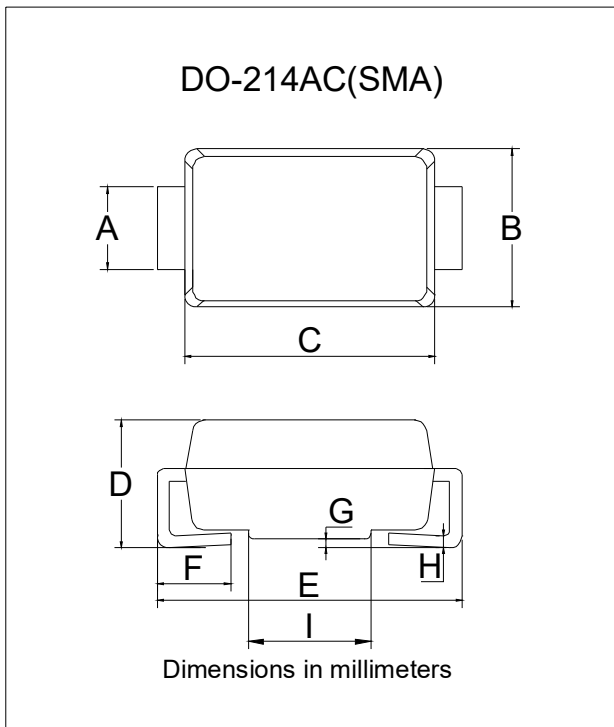
Fig.5 - Typical Junction Capacitance





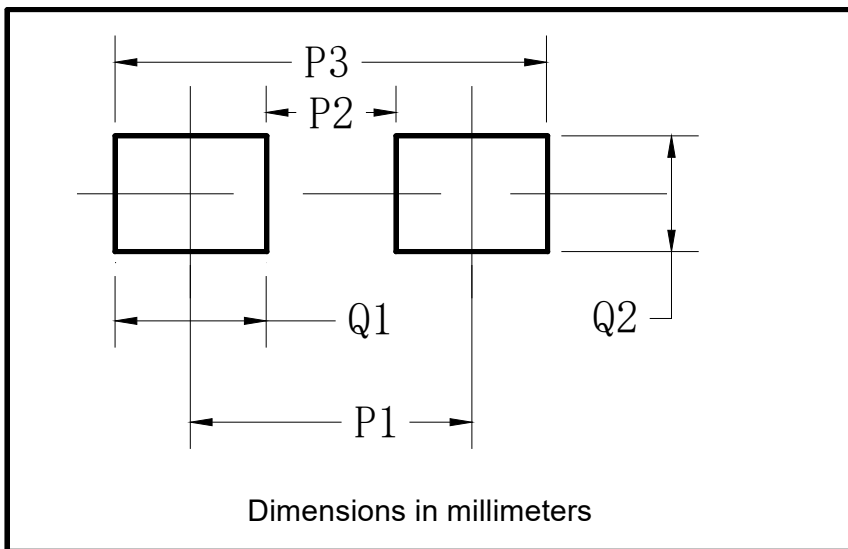
GS1AQ THRU GS1MQ

■ Outline Dimensions



DO-214AC(SMA)		
Dim	Min	Max
A	1.25	1.58
B	2.40	2.83
C	4.00	4.75
D	1.90	2.30
E	4.93	5.28
F	0.76	1.41
G	0.05	0.20
H	0.15	0.31
I	1.7	2.1

■ Suggested Pad Layout



DO-214AC(SMA)	
Dim	Millimeters
P1	4.00
P2	1.50
P3	6.50
Q1	2.50
Q2	1.70



GS1AQ THRU GS1MQ

Disclaimer

The information presented in this document is for reference only. Yangzhou Yangjie Electronic Technology Co., Ltd. reserves the right to make changes without notice for the specification of the products displayed herein to improve reliability, function or design or otherwise.

The product listed herein is designed to be used with automotive electronics, are not designed for use in medical, lifesaving, lifesustaining, or military, Yangjie or anyone on its behalf, assumes no responsibility or liability for any damages resulting from such improper use of sale.

This publication supersedes & replaces all information previously supplied. For additional information, please visit our website [http:// www.21yangjie.com](http://www.21yangjie.com) , or consult your nearest Yangjie's sales office for further assistance.